



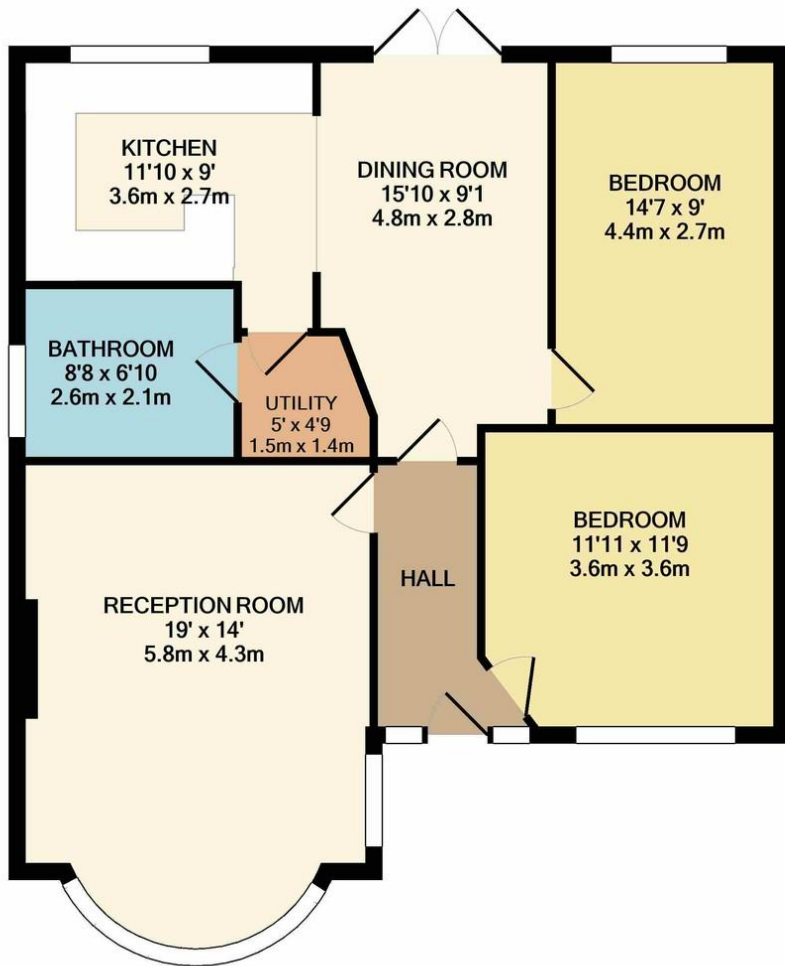
Borrowdale Avenue

Harrow, Middlesex, HA3 7PY

£675,000

A two double bedroom detached bungalow with two large reception rooms, kitchen, utility, shower room / wc and own drive to side leading to detached garage. This chain free property requires complete modernisation and is located close to Belmont Circle for shops, health centre, bus stops and Belmont and St Joseph primary schools. EPC Rating: D





EPC Rating: D

TOTAL APPROX. FLOOR AREA 887 SQ.FT. (82.4 SQ.M.)

Whilst every attempt has been made to ensure the accuracy of the floor plan contained here, measurements of doors, windows, rooms and any other items are approximate and no responsibility is taken for any error, omission, or mis-statement. This plan is for illustrative purposes only and should be used as such by any prospective purchaser. The services, systems and appliances shown have not been tested and no guarantee as to their operability or efficiency can be given
Made with Metropix ©2020

Belmont Circle Office
506 Kenton Lane
Harrow
Middlesex
HA3 8RD

www.blacklarsestateagents.co.uk
0208 907 7701
sales@blacklarsestates.co.uk

Agents Note: Whilst every care has been taken to prepare these particulars, they are for guidance purposes only. All measurements are approximate and for general guidance purposes only and whilst every care has been taken to ensure their accuracy, they should not be relied upon and potential buyers/tenants are advised to recheck the measurements