



## Grasmere Gardens

Harrow, HA3 7PS

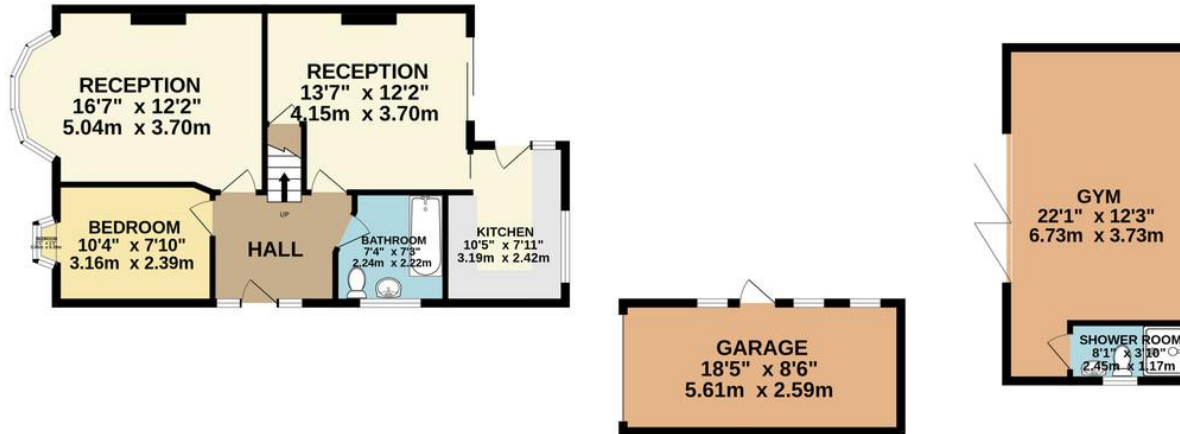
**£589,950**

A three bedroom semi-detached chalet style property with garage, own driveway to side and approx. 110 x 34' rear garden. This chain free property also benefits from a modern detached gym with shower and wc at the rear of the garden and is located close to Belmont Primary School, St. Joseph's Primary School, health centre, bus stops and local shops at Belmont Circle.

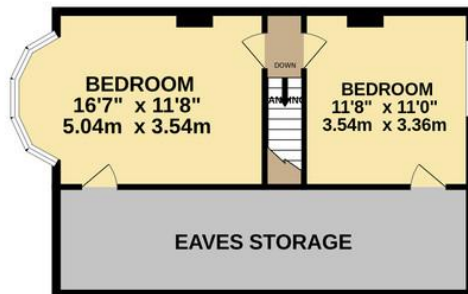
EPC Rating: D



GROUND FLOOR  
1043 sq.ft. (96.9 sq.m.) approx.



1ST FLOOR  
528 sq.ft. (49.0 sq.m.) approx.



TOTAL FLOOR AREA: 1570 sq.ft. (145.9 sq.m.) approx.

Whilst every attempt has been made to ensure the accuracy of the floorplan contained here, measurements of doors, windows, rooms and any other items are approximate and no responsibility is taken for any error, omission or mis-statement. This plan is for illustrative purposes only and should be used as such by any prospective purchaser. The services, systems and appliances shown have not been tested and no guarantee as to their operability or efficiency can be given.  
Made with Metropix ©2023

EPC Rating: D

Belmont Circle Office  
506 Kenton Lane  
Harrow  
Middlesex  
HA3 8RD

[www.blacklarsestateagents.co.uk](http://www.blacklarsestateagents.co.uk)  
0208 907 7701  
[sales@blacklarsestates.co.uk](mailto:sales@blacklarsestates.co.uk)

Agents Note: Whilst every care has been taken to prepare these particulars, they are for guidance purposes only. All measurements are approximate and for general guidance purposes only and whilst every care has been taken to ensure their accuracy, they should not be relied upon and potential buyers/tenants are advised to recheck the measurements