



MILE



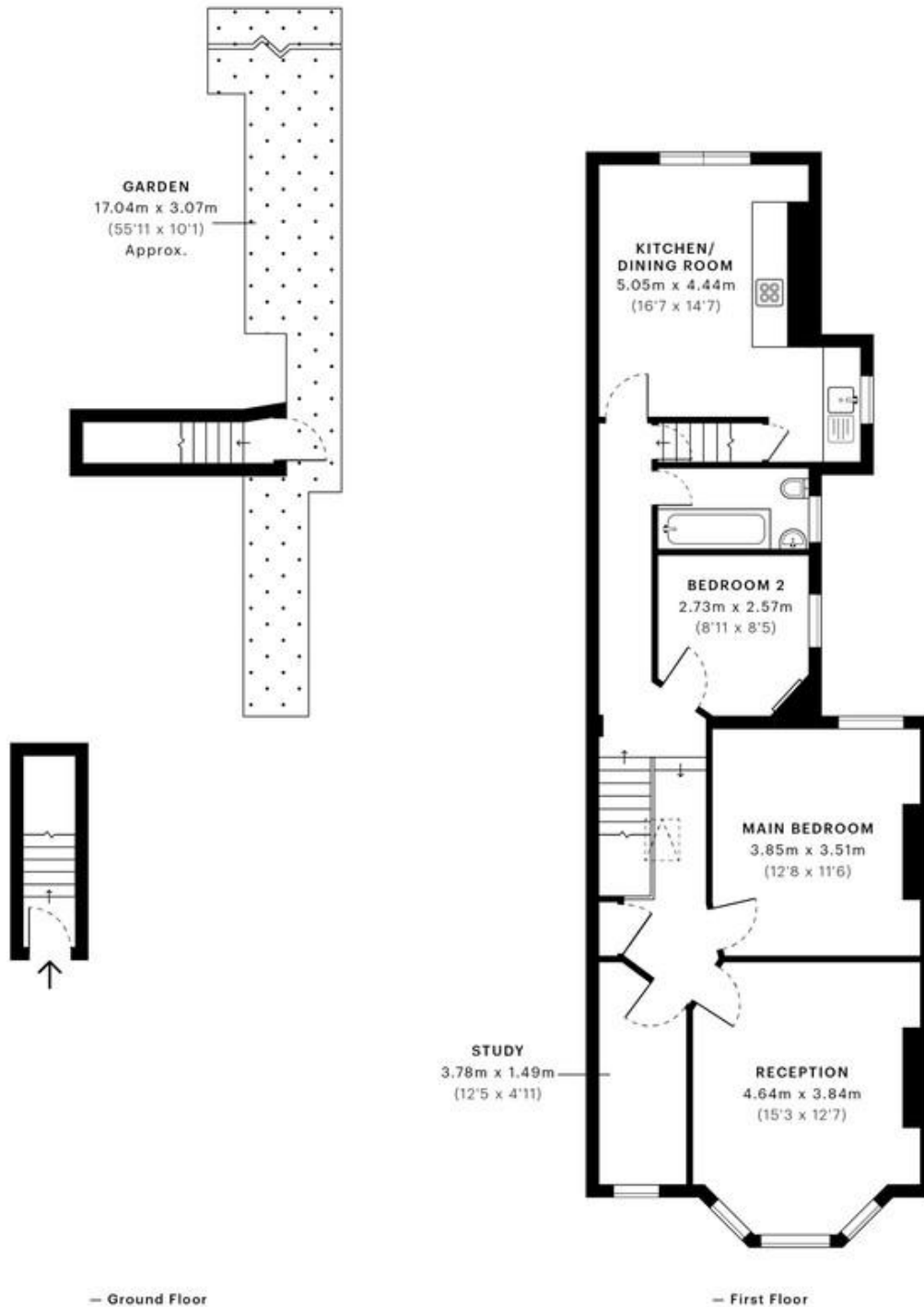
mile...
estate agents



Ridley Road, London NW10 OIEO £500,000 Leasehold

Mile are delighted to bring to the market this charming three bedroom apartment with private garden on this leafy residential road

- First floor apartment
- Westerly facing garden
- Three bedrooms
- Potential to extend (STPP)
- Long lease
- Quiet residential road
- Over 900 sq ft of living space
- Bright and airy
- Short walk to open green space of King Edward & Roundwood Park
- Close to shops and transport



GROSS INTERNAL AREA (GIA)
The footprint of the property
83.96 sqm / 903.74 sqft

NET INTERNAL AREA (NIA)
Excludes walls and external features
Includes washrooms, restricted head height
76.24 sqm / 820.64 sqft

EXTERNAL STRUCTURAL FEATURES
Balconies, terraces, verandas etc.
0.00 sqm / 0.00 sqft

RESTRICTED HEAD HEIGHT
Limited use area under 1.5 m
0.00 sqm / 0.00 sqft