

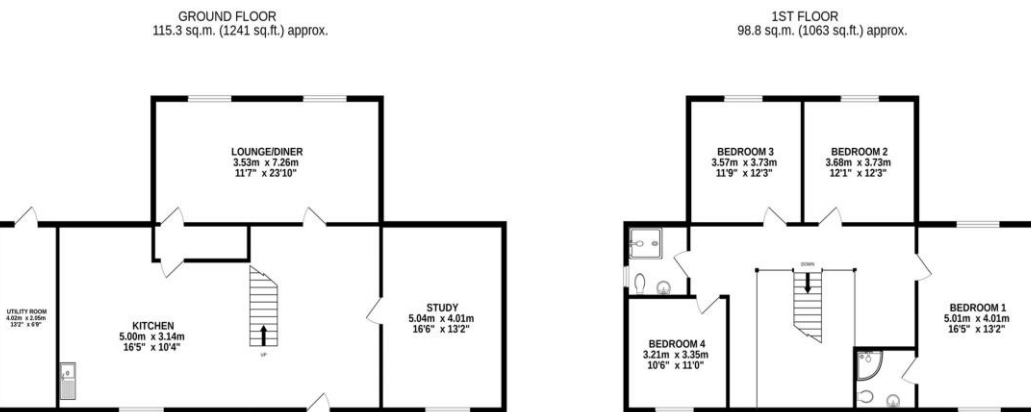


Water Side Residential

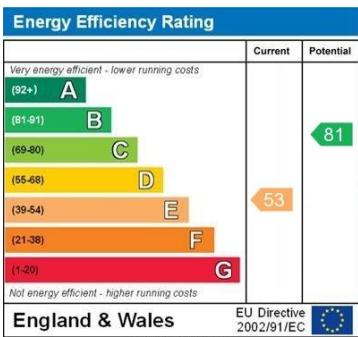
Thames Street
Sunbury on Thames

Thames Street, Sunbury on Thames TW16 6AF

Guide £895,000.00 Freehold



TOTAL FLOOR AREA: 214.0 sq.m. (2304 sq.ft.) approx.
Made with Metropix ©2022



Located in this historic riverside village and forming part of the conservation area is this extremely attractive period home which has been lovingly restored by the current owners. Beautifully presented accommodation includes a well fitted kitchen with granite surfaces and dining area, spacious living room with wood burning stove and double doors opening to a beautiful sun room with heated terracotta tiled floor. To the first floor is a fabulous master bedroom with vaulted ceiling and enjoying views over the garden and river beyond, a further double bedroom with fitted wardrobes and bathroom. Stairs lead from the kitchen to a basement with study area, storage room and utility room with appliances. Outside a stone patio leads to a large lawned area with steps down to a further patio area ideal for enjoying the river activity and deep water mooring. There is a double dept garage close by that is available under separate negotiation. this

These details are believed to be correct but their accuracy is not guaranteed. They do not form any part of a contract, written or otherwise. The information has been provided by the vendors. Appliances and heating systems have not been tested by Waterside Residential

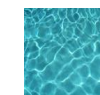




Tenure*
Services*

Freehold
Water, Electricity
Mains Drainage
Spelthorne Borough Council

Local Authority



Water Side
Residential

Boldre House, Weston Green
Thames Ditton, KT7 0JP
0208 398 9400
sales@watersideresidential.co.uk