



MILE



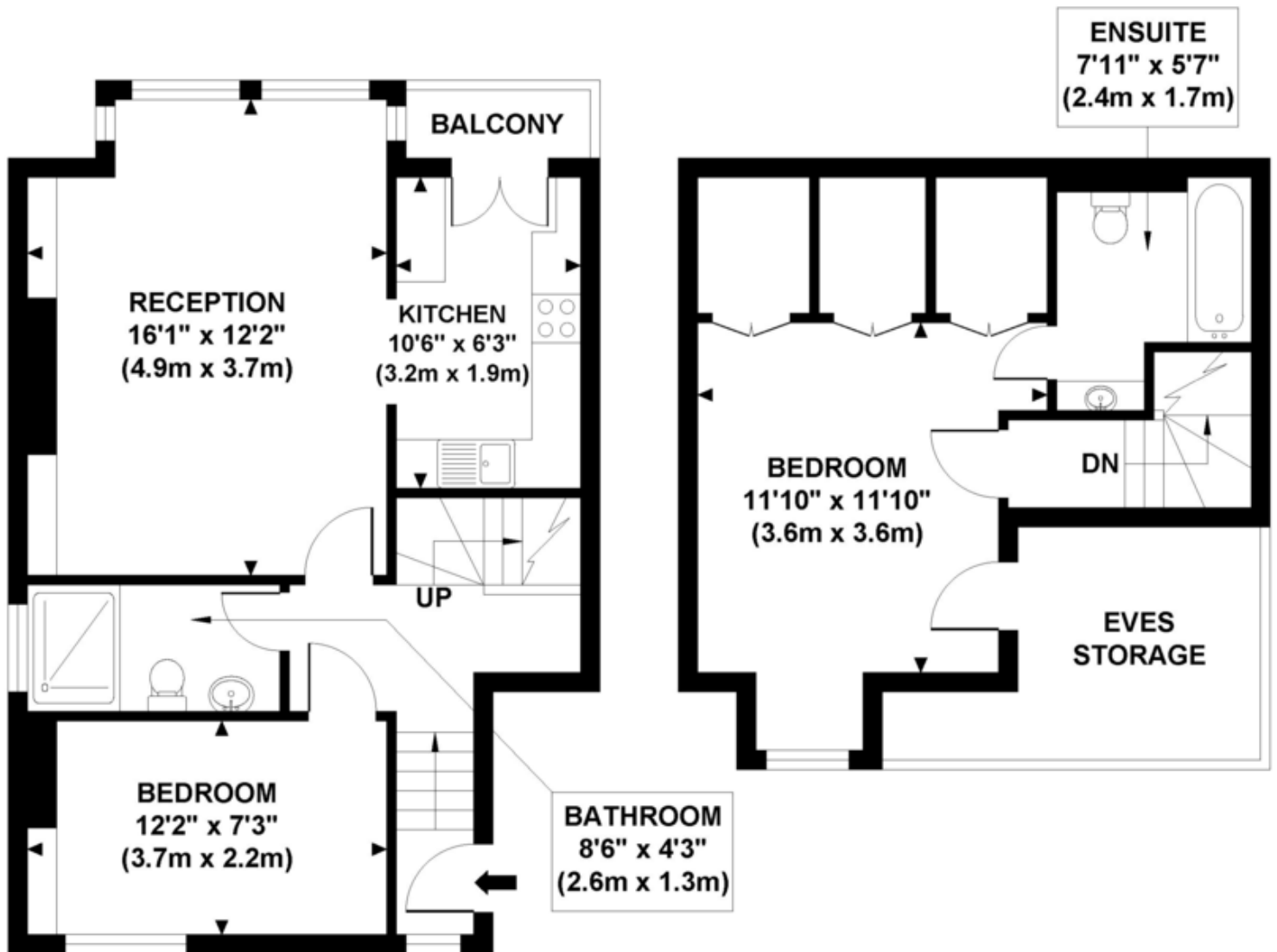
## Chevening Road, Queens Park NW6 £625,000 Share of Freehold

Mile are delighted to introduce to the market this stunning split-level apartment set on the first and second floor of this semi-detached Edwardian conversion within this prime location of Queens Park.

- Superb split-level apartment
- Two double bedrooms
- Lovely balcony
- Excellent condition
- Share of freehold
- Chain free
- Two bathrooms (one en-suite)
- Double glazed sash windows
- Fantastic location
- Close to shops and transports

# CHEVENING ROAD

Approximate Gross Internal Area 744 sq ft / 69.11 sq m



**FIRST FLOOR  
GROSS INTERNAL  
FLOOR AREA 470 SQ FT**



**SECOND FLOOR  
GROSS INTERNAL  
FLOOR AREA 274 SQ FT**

Although every attempt has been made to ensure accuracy, all measurements are approximate.

**MONEY LAUNDERING REGULATIONS 2003:** Intending purchasers will be asked to produce identification documentation at a later stage and we would ask for your co-operation in order that there will be no delay in agreeing the sale.

**General:** While we endeavour to make our sales particulars fair, accurate and reliable, they are only a general guide to the property and, accordingly, if there is any point which is of particular importance to you, please contact the office and we will be pleased to check the position for you, especially if you are contemplating travelling some distance to view the property.

**Measurements:** These approximate room sizes are only intended as general guidance. You must verify the dimensions carefully before ordering carpets or any built-in furniture.

**Services:** Please note we have not tested the services or any of the equipment or appliances in this property, accordingly we strongly advise prospective buyers to commission their own survey or service reports before finalising their offer to purchase.