



Grovelands Close | London | SE5

Freehold

£385,000

- One double bedroom
- Private of street parking
- Front garden
- potential to update
- Detached
- Open plan
- Denmark Hill Station
- Kings College Hospital
- Ruskin Park
- Local amenities

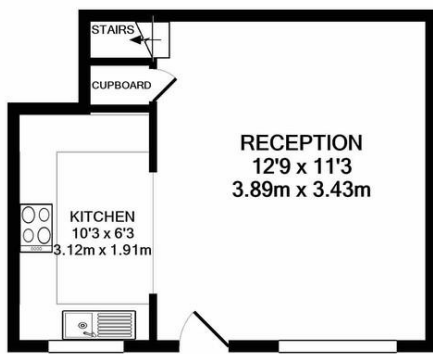


A lovely bright and cheerful, one bedroom house with pretty front garden, just off of Camberwell Grove. This stylish detached house comes with an allocated off street parking space. The ground floor has a good sized reception room and kitchen. Upstairs is a double bedroom and bathroom with three piece suite. The house is in good condition but there is also scope to make some upgrades and put your own stamp on it. Very close to Denmark Hill Station, Kings College Hospital and the amenities in Camberwell. A perfect first time buy in a convenient location in a quiet cul-de-sac with a close knit community. Freehold, estate charge of £700 per year.

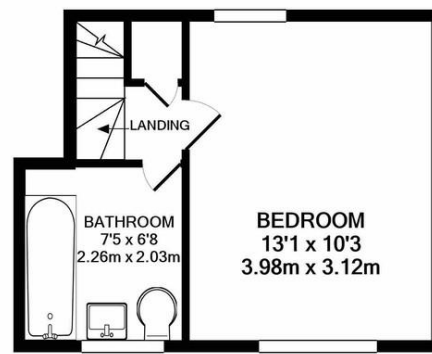




%epcGraph\_c\_1\_300%



GROUND FLOOR



1ST FLOOR

Whilst every attempt has been made to ensure the accuracy of the floor plan contained here, measurements of doors, windows, rooms and any other items are approximate and no responsibility is taken for any error, omission, or mis-statement. This plan is for illustrative purposes only and should be used as such by any prospective purchaser. The services, systems and appliances shown have not been tested and no guarantee as to their operability or efficiency can be given  
Made with Metropix ©2022

## Viewing Arrangements

Strictly by appointment

## Contact Details

121 Denmark Hill

London

SE5 8EN

[www.urbanvillagehomes.co.uk](http://www.urbanvillagehomes.co.uk)

[sales@urbanvillagehomes.com](mailto:sales@urbanvillagehomes.com)

020 3519 9121

Agents Note: Whilst every care has been taken to prepare these sales particulars, they are for guidance purposes only. All measurements are approximate are for general guidance purposes only and whilst every care has been taken to ensure their accuracy, they should not be relied upon and potential buyers are advised to recheck the measurements