

WILKINSONBYRNE

ESTATE AGENTS

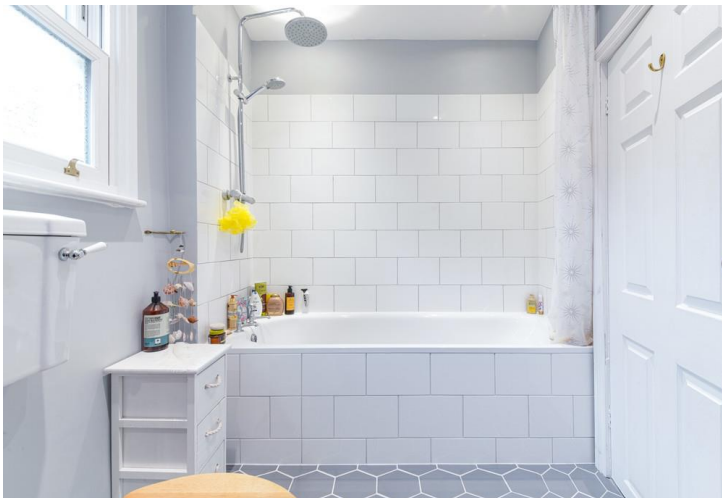


Dongola Road, N17 6EB

£350,000 LEASEHOLD

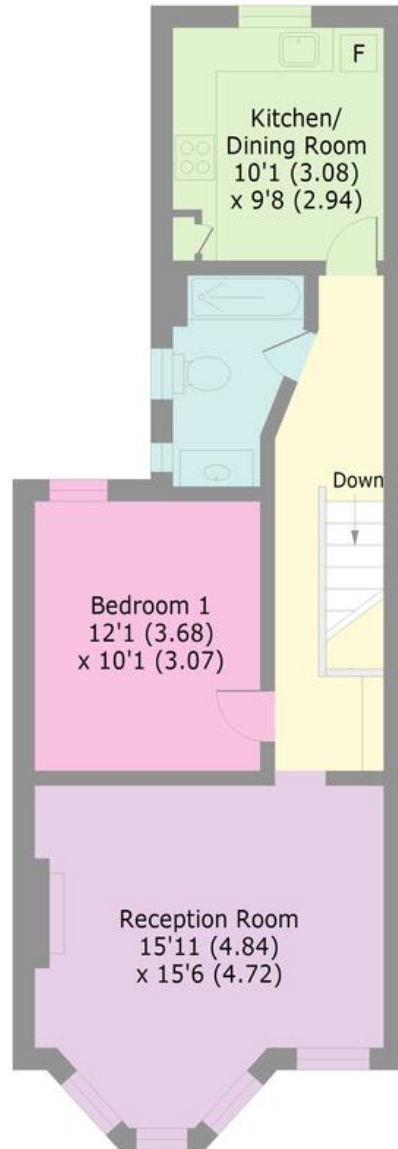
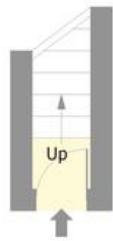
A stunning one bedroom first floor Victorian conversion situated on a popular tree lined residential street. The apartment oozes style and has been tastefully decorated by the current owner with over 630 Sq ft of living space. Benefits include a bay fronted reception room, one double bedroom, kitchen/diner and modern bathroom. Further benefits include an abundance of storage space and offered with no onward chain. Dongola Road is conveniently situated within close proximity of the award winning Downhills Park and offers access to Seven Sisters BR/Underground station (Victoria Line - Zone 3).

Sole Agents



Dongola Road, N17

Approx. Gross Internal Area 632 Sq Ft - 58.7 Sq M



GROUND FLOOR
ENTRANCE

FIRST FLOOR



1



Bedrooms

1



Receptions

1



Bathrooms

No



Garden

Tenure:

Leasehold

Energy Efficiency Rating:

65

Bounds Green Office

3 Latham Court

Brownlow Road

London N11 2ES

0208-365-8900

boundsgreen@wilkinsonbyrne.com

Turnpike Lane Office

8 Turnpike Parade

Green Lanes

London N15 3EA

0208-888-0022

Turnpikelane@wilkinsonbyrne.com