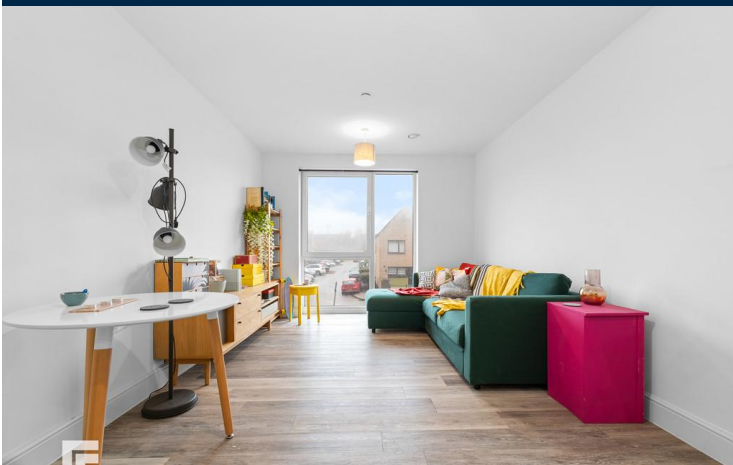




SCHOONER WHARF
SCHOONER DRIVE
CARDIFF CF10 4ET

ASKING PRICE OF
£159,950



ONE BEDROOM APARTMENT



1



1



1



1

****IDEAL FIRST TIME PURCHASE OR INVESTMENT* NO CHAIN**** MGY are pleased to present for sale a spacious one bedroom, first floor apartment, in the popular Schooner Wharf development. Conveniently situated between Cardiff Bay and the City Centre. Close to local amenities and public transport links. The modern accommodation comprises of entrance hall, open plan lounge/kitchen/diner, double bedroom and bathroom. Ideal first time purchase or investment. Street parking nearby. EWS1 form in place. No chain. Viewing highly recommended.

TENURE: LEASEHOLD

COUNCIL TAX BAND: D

FLOOR AREA APPROX: 505 SQ FT

VIEWING: STRICTLY BY APPOINTMENT

ENTRANCE HALL

Entered via wooden door, with security spy hole. Laminate wood effect flooring. Wall mounted electric panel heater. Large storage cupboard, housing hot water tank. Wall mounted security intercom system.

LOUNGE/KITCHEN/DINER

23' 9" x 10' 0" (7.24m x 3.07m)

Double glazed uPVC floor to ceiling windows to front and side, with lovely water views to size. Laminate wood effect flooring. Wall mounted electric panel heater. TV Aerial point. Telephone point. Modern kitchen. Fitted units, with work surfaces incorporating stainless steel sink, with dual tap. Ample storage. Integrated Zanussi oven and four ring electric Zanussi hob, with stainless steel extractor hood over. Splash back. Extractor fan. Integrated fridge freezer. Space for washing machine. Spotlights. Open plan living.

BEDROOM

12' 3" x 10' 6" (3.74m x 3.22m)

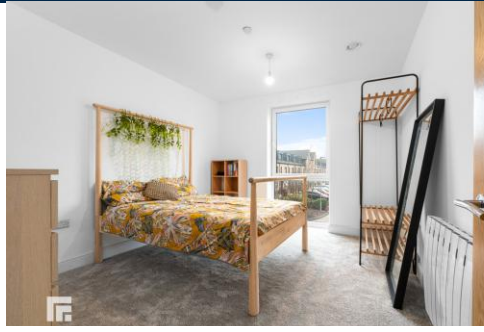
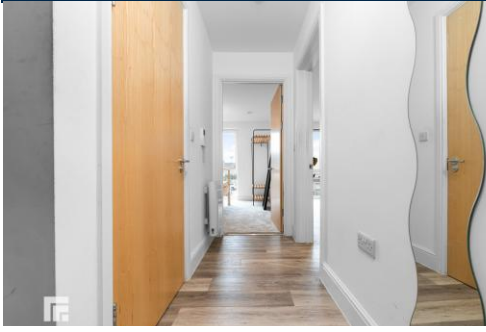
Double glazed uPVC floor to ceiling windows. Spacious double bedroom. New carpeted flooring. TV Aerial point. Wall mounted electric panel heater.

TENURE

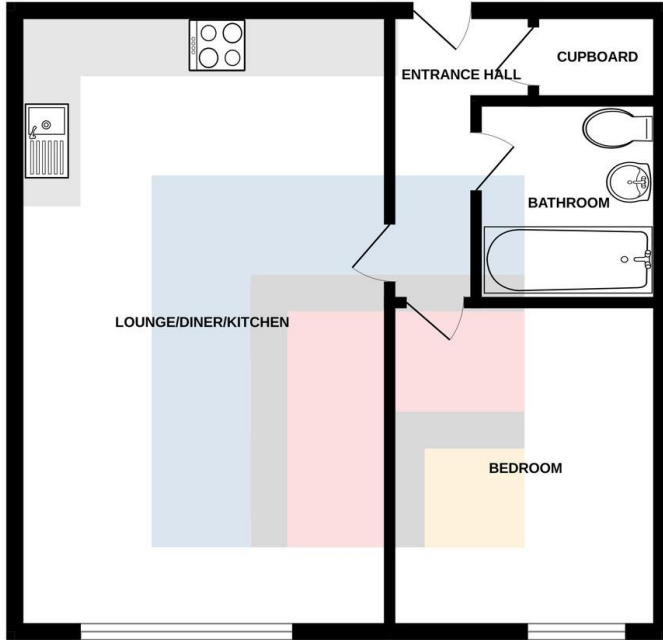
MGY are advised that the property is leasehold, with a term of 250 years from 2017. Low service charges of £853.55 per annum, which includes lift maintenance, video entry intercom system, secure fob access, CCTV, maintenance of internal and external communal areas, regular cleaning, refuse disposal and bike storage. Ground rent £125 per annum. Building insurance £388.54 per annum. NHBC Warranty cover in place.



SCHOONER WHARF, SCHOONER DRIVE, CARDIFF CF10 4ET



SCHOONER WHARF, SCHOONER DRIVE, CARDIFF CF10 4ET



Whilst every attempt has been made to ensure the accuracy of the floorplan contained here, measurements of doors, windows, rooms and any other items are approximate and no responsibility is taken for any error, omission or mis-statement. This plan is for illustrative purposes only and should be used as such by any prospective purchaser. The services, systems and appliances shown have not been tested and no guarantee as to their operability or efficiency can be given.
Made with Metapix v2024

Score	Energy rating	Current	Potential
92+	A		
81-91	B	88 B	88 B
69-80	C		
55-68	D		
39-54	E		
21-38	F		
1-20	G		

CARDIFF 029 2046 5466

13 Mount Stuart Square, Cardiff Bay, Cardiff,
South Glamorgan, CF10 5EE



Important Notice: These particulars are prepared for guidance only and do not form whole or any part of any offer or contract. Whilst the particulars are given in good faith, they are not to be relied upon as being a statement or representation of fact. They are made without responsibility on the part of MGY Ltd or Vendor/lessor and the prospective purchaser/lessee should satisfy themselves by inspection or otherwise as to their accuracy. Neither MGY Ltd nor anyone in their employ, or the vendor/lessor, imply, make or give any representation/warranty whatsoever in relation to this property.

MGY.CO.UK