



Water Lily

DESCRIPTION:

An exceptional 3-Bedroom Bespoke Floating Home with 1,240 Sq. Ft. of contemporary living space.

We are delighted to present this stunning, bespoke three-bedroom floating home, offering an impressive 1,240 sq. ft. of thoughtfully designed accommodation. With floor-to-ceiling windows, this unique residence is filled with natural light, creating a bright and airy living environment.

This beautifully crafted floating home is available as a **'boat-only'** purchase, providing an exciting opportunity for those looking to embrace a unique and tranquil lifestyle on the water. Built approximately 10 years ago, the vessel has been meticulously designed to maximize both space and comfort.

Stepping inside, you are immediately welcomed into an expansive 32-foot main living area, complete with elegant engineered wood flooring. This open-plan space seamlessly connects to a fully fitted kitchen, offering an abundance of worktop and storage space, making it ideal for both everyday living and entertaining.

The property boasts three generously sized double bedrooms, two of which feature private en-suite bathrooms, providing the perfect balance of privacy and convenience. The well-proportioned rooms allow for flexibility in layout and usage, catering to a variety of lifestyle needs.

An added feature of this floating home is the superb storage space, accessed from the main living area, ensuring ample room for belongings without compromising on the sleek and modern aesthetic of the interior.

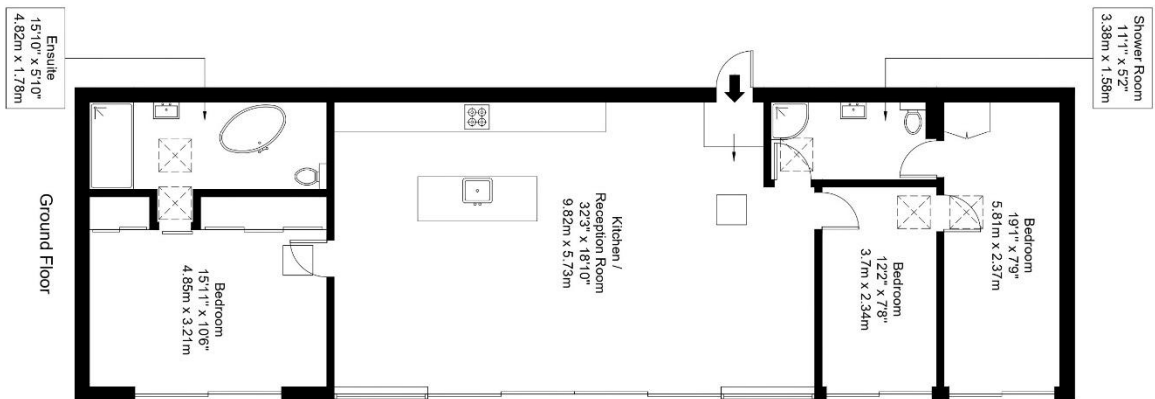
Offering an extraordinary alternative to conventional living, this floating home provides the perfect blend of contemporary design and waterside tranquillity. Whether used as a full-time residence, a unique holiday retreat, or an office space, this exceptional property offers a rare and exciting opportunity to enjoy life on the water in comfort and style.

For more information or to arrange a viewing, please contact us today.





Approx Gross Internal Area = 115.2 sq m / 1240 sq ft

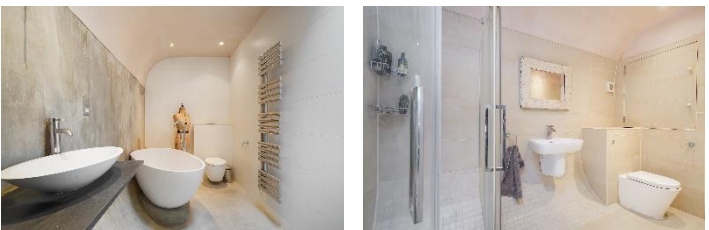


Ref :

The Floor plan is not to scale and measurements and areas shown are approximate and therefore should be used for illustrative purposes only. The plan has been prepared in accordance with the RICS code of Measuring Practice and whilst we have confidence in the information produced it must not be relied on. Maximum lengths and widths are represented on the floor plan. If there is any aspect of particular importance, you should carry out or commission your own inspection of the property.
Copyright @ BleuPlan

INFORMATION (BOAT ONLY)

EPC: Exempt
PRICE: £200,000



Important Notice: 1. These particulars have been prepared in good faith as a general guide, they are not exhaustive and include information provided to us by other parties including the seller, not all of which will have been verified by us. 2. We have not carried out a detailed or structural survey; we have not tested any services, appliance or fittings. Measurements, floorplans, orientation and distances are given as approximate only and should not be relied on. 3. The photographs are not necessarily comprehensive or current, aspects may have changed since the photographs were taken. No assumption should be made that any contents are included in the sale. 4. We have not checked that the property has all necessary planning, building regulation approval, statutory or regulatory permissions or consents. Any reference to any alterations or use of any part of the property does not mean that necessary planning, building regulations, or other consents has been obtained. 5. Prospective purchasers should satisfy themselves by inspection, searches, enquiries, surveys, and professional advice about all relevant aspects of the property. 6. These particulars do not form part of any offer or contract and must not be relied upon as statements or representations of fact; we have no authority to make or give any representation or warranties in relation to the property. If these are required, you should include their terms in any contract between you and the seller.

01784 557 898 info@absolute-homes.co.uk absolute-homes.co.uk

Boldre House, Weston Green, Thames Ditton, Surrey KT7 0JP T 0208 398 9400