



The Hollies, 3 The Green, Quainton,  
Buckinghamshire, HP22 4AR

**W. HUMPHRIES**  
VILLAGE, COUNTRY AND EQUESTRIAN PROPERTY



Aylesbury approx. 6 miles (Marylebone 55 mins.), Bicester approx. 10 miles, Milton Keynes approx. 12 miles, London approx. 45 miles

## **THE HOLLIES, 3 THE GREEN, QUANTON, BUCKINGHAMSHIRE, HP22 4AR**

**A GRADE II LISTED 17<sup>TH</sup> CENTURY HOUSE FOR RESTORATION IN A BEAUTIFUL LOCATION OVERLOOKING THE STUNNING QUANTON VILLAGE GREEN. THE HOUSE HAS ACCESS ACROSS THE GREEN TO ITS OWN DRIVEWAY AND PARKING. LARGE 150FT GARDENS AND RANGE OF OUTBUILDINGS.**

**Kitchen, Large Cloakroom, Utility Room, 2 Reception Rooms, 2 First Floor Bedrooms & Bathrooms, 2 Attic Rooms (Restricted Access). Big Plot. Barn, Garage & Covered Store.**

**GUIDE PRICE £475,000 Freehold**

### **DESCRIPTION**

The Hollies occupies an enviable position at the bottom of the idyllic Quanton village green and very unusually has a vehicular access across the green to its own driveway and parking, something highly prized in such a picturesque location.

The property is listed grade II and requires modernisation although a plus side to that is the house has not been stripped of its character and features and provides the opportunity for someone to carry out a wonderful restoration of the accommodation, some of the door treads are worn down from hundreds of years of use. The Hollies also enjoys a range of outbuildings and approximately a 150ft long rear garden which is a superb mature plot also ripe for landscaping. The dwelling dates from the 1600's and was altered in the late 1800's when bay sash windows were introduced to the front elevation with a tile roof being added probably in the 20<sup>th</sup> century.

At the entrance the door opens into a lobby that has a stone floor and to the right is what would be a dining room or family room maybe that contains a relatively modern brick fireplace. Left of the lobby is the sitting room sporting very much the original and wonderful inglenook fireplace and both the reception rooms have bay windows with seating where in days gone by I'm sure the residents would have watched the world and people go by about their business. The kitchen floor

is quarry tiles and there is a butlers sink and a few cupboards. The old white enamel Rayburn remains and in the corner is a large walk in pantry. Off the side is a hall and from there a generous cloakroom and then a utility room. The staircase curves up to the first floor and two bedrooms and a bathroom, the main bedroom retains the cast iron fireplace and in between the bedrooms is a spacious alcove which could be used to create a dressing area or ensuite. The second floor stairs are on the landing and they serve two attic room, each have windows in the gable ends.

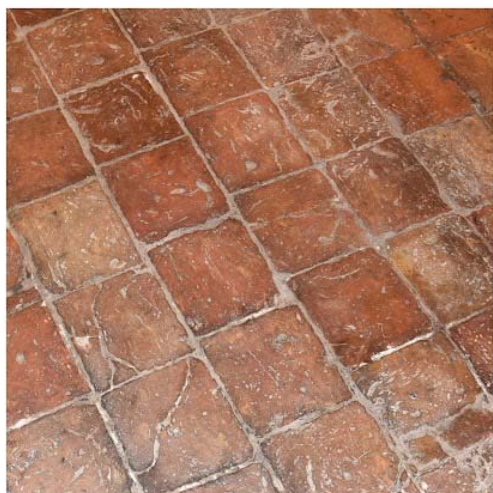
### **OUTSIDE**

Attached to the utility and cloakroom are a range of timber outbuildings with slate roofs comprising a barn, garage, and an open store as indicated on the floor plan. The barn and garage have brick and cobble floors and mains power and lighting and adjacent the open store lies a small brick shed. A few yards beyond is a lean to greenhouse.

It is an excellent plot with a path through the middle of lawn, grass, mature shrubs and trees with a vegetable patch towards the back and on the boundary two brick pig styes and a considerable corrugated tin storage building.

The garden is about 40ft wide and extends to circa. 150ft in depth.

A rarity for the green The Hollies has access across a track into its own driveway and parking for a few cars. At the front of the house is a dwarf stone wall with a hand gate and a bit of garden space.



**COUNCIL TAX** – Band F £3,083.70 per annum

**SERVICES** - Mains Water, Drainage & Electricity.

**VIEWING** - Strictly by appointment through the vendors agents W Humphries Ltd

### **LOCATION**

Quanton takes its name from the Old English words Cwen + Tun and means 'The Queens Farmstead or Estate' prominent on the skyline is the 14<sup>th</sup> century church which is exceptionally rich in large late 17<sup>th</sup> and 18<sup>th</sup> century monuments. The centre point of Quanton is the picturesque village green which looks up towards the 1830 working windmill. In the middle of the green is a fourteenth century preaching cross and in a picture from the late 1800's the old whipping post is visible where miscreants were tied and flogged! Until the outbreak of Dutch Elm disease the village was encompassed by trees. Quanton now has a public house, café, motor repairs, a general store and post office, and there are many clubs and societies. The sports ground features a football pitch, tennis court, and skateboard park.

The surrounding market towns and villages provide a wealth of historical and interesting places to visit including Waddesdon Manor, Claydon House and Quanton Steam Railway which frequently hosts family events. Extensive shopping facilities are situated at Bicester Village Retail Outlet, Friar's Square Centre in Aylesbury, and Milton Keynes.

The A41 provides easy access into Aylesbury, Bicester and the M40 network. Rail connections are fast and convenient on the Chiltern Turbo reaching London Marylebone in under an hour from Aylesbury. Services to Euston are available from Cheddington and Leighton Buzzard. Aylesbury Parkway now provides a link to Marylebone at Fleet Marston. Bicester Village station provides a rail service to Oxford in 10 minutes and again London Marylebone in under an hour.

### **EDUCATION**

Preparatory schools at Ashfold, Swanbourne and Oxford.  
Village Pre-School and Primary School at Quanton.  
Waddesdon Secondary School.  
Public schools at Stowe, Berkhamsted and Oxford.  
Grammar Schools at Aylesbury and Buckingham.



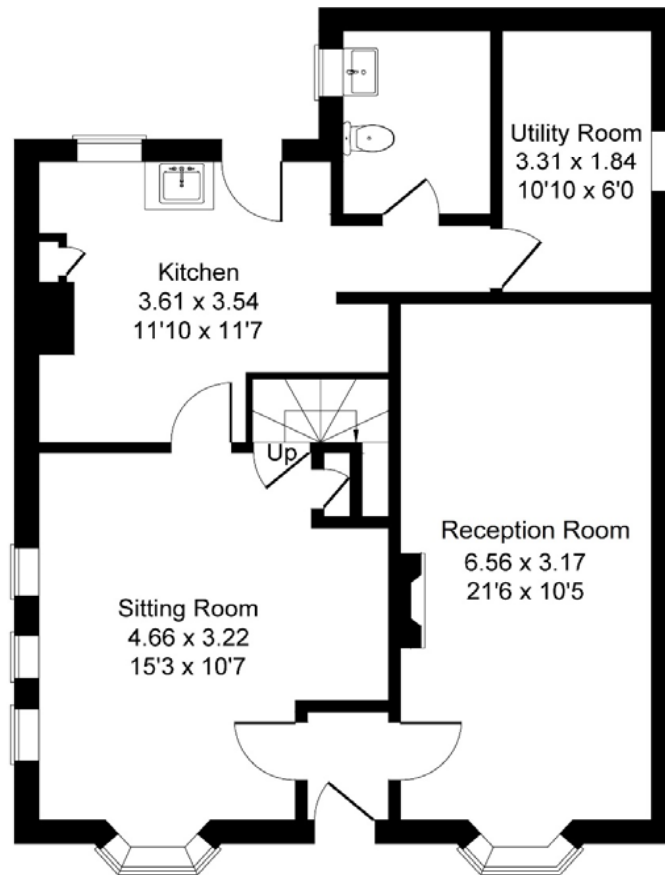
# 3 The Green

Approximate House Gross Internal Area = 136.55 sq m / 1469.81sq ft

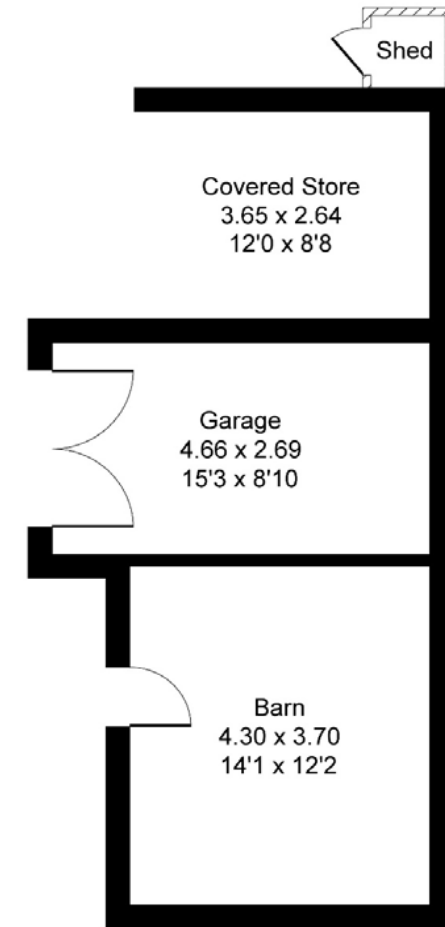
Outbuilding = 29.00 sq m / 312.15 sq ft

Illustration for identification purposes only,  
measurement are approximate, not to scale,  
produced by The Plan Portal 2024.

THE OUTBUILDINGS ADJOIN THE  
UTILITY ROOM AND CLOAKROOM



**Ground Floor**

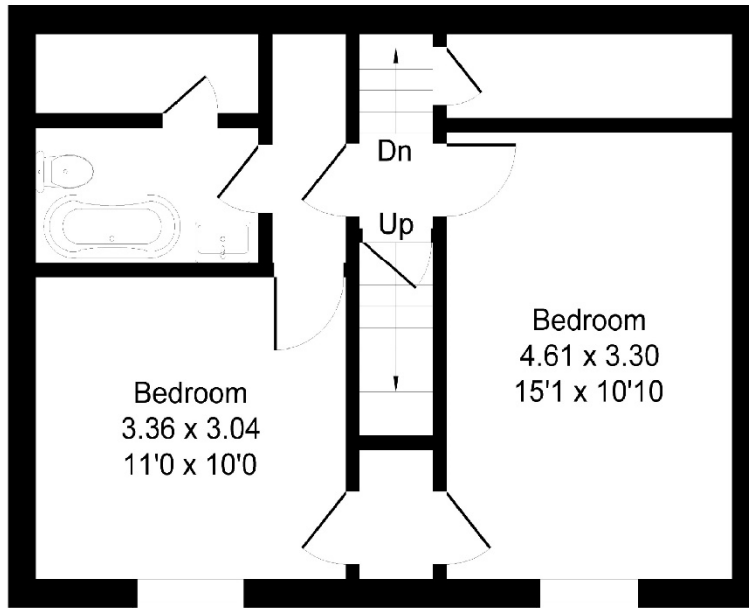


**Outbuilding**

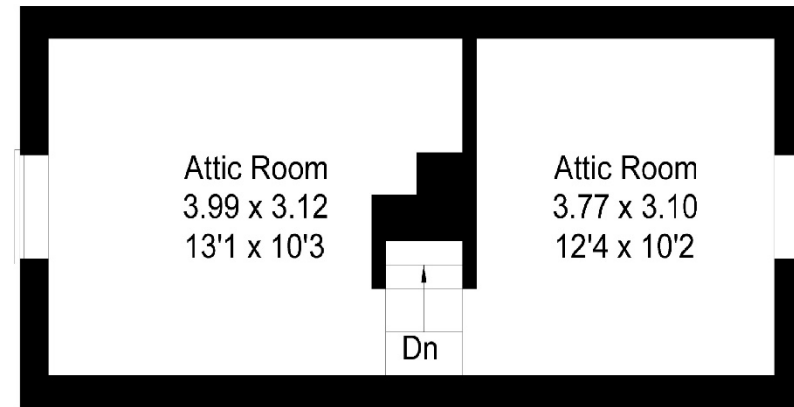
# 3 The Green

Approximate Gross Internal Area = 66.11 sq m / 711.60 sq ft

Illustration for identification purposes only,  
measurements are approximate, not to scale,  
produced by The Plan Portal 2024.

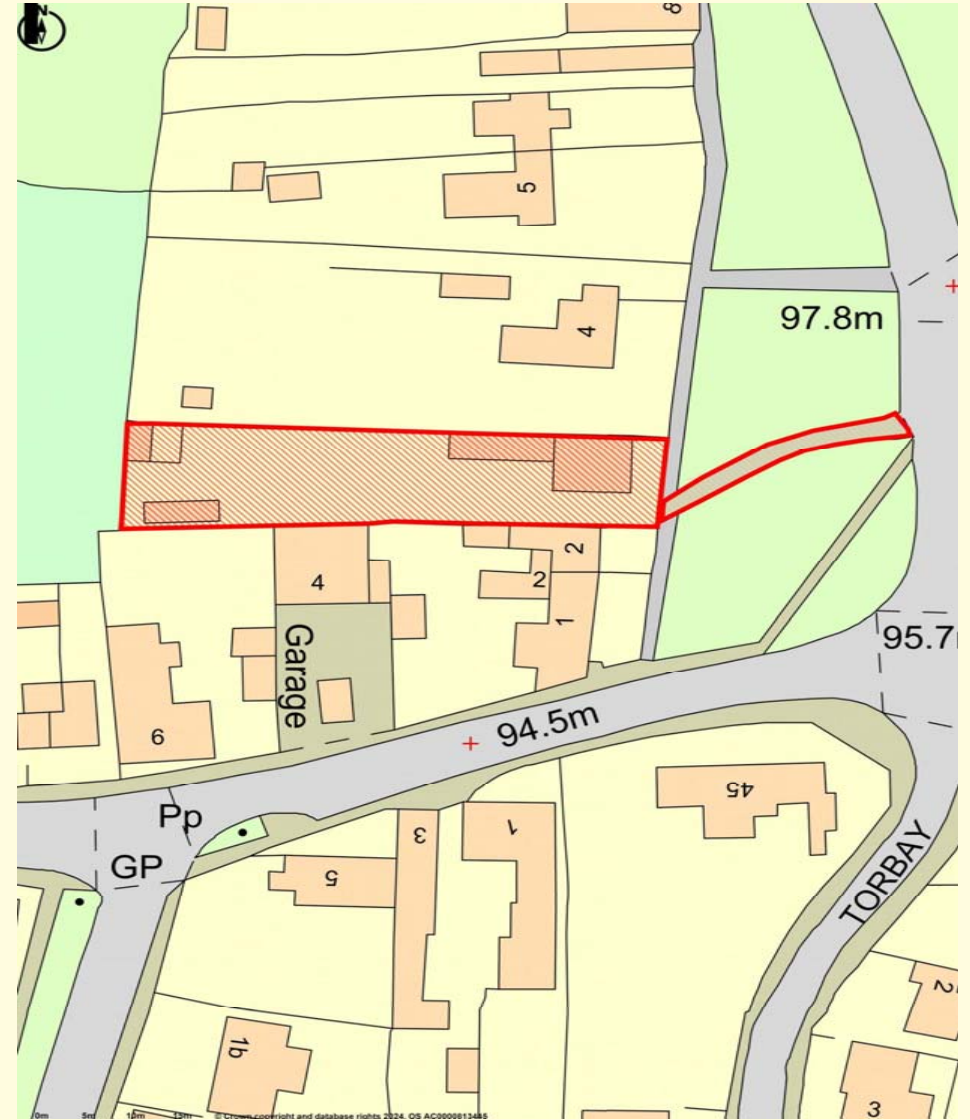


**First Floor**



**Second Floor**





#### IMPORTANT NOTICE

**W. HUMPHRIES** for themselves and as Agents to the Vendors of the property give notice that:

- 1 These particulars have been prepared to give a fair overall description of the property whilst some descriptions are inevitably subjective, all information is given in good faith. No statement within these particulars should be relied upon as being either a statement or a representation of fact. The descriptions within do not contribute part of any offer or contract.
- 2 All measurements, areas and distances mentioned in these particulars are approximate and are issued as a guide only. If such details are fundamental to a purchase, purchasers must rely on their own enquiries.
- 3 Photographs incorporated within these particulars show only certain parts of the property and no assumptions should therefore be made in respect of parts of the property which may not be shown.
- 4 Nothing in these particulars should be seen as a statement that the property or any fixture described is in good condition or otherwise. Purchasers must satisfy themselves as to the condition of any property or item included within the sale. None of the appliances or services mentioned in these particulars have been tested by W. Humphries and no warranty is given or implied by them that they are in good working order.
- 5 If reference is made either to alterations to the property or a change of use, no warranty is given by W. Humphries or the Vendors/Lessors that any planning or other consents or Building Regulations approval has been obtained. Where references are made to potential uses (subject to planning) this information is given in good faith although purchasers must take their own enquiries to the relevant authorities.
- 6 Most importantly if there is any particular aspect of the property about which you would like further information, we invite you to discuss this with us before you travel to view the property.



