

Head Office:
Dixon Kelley Estate Agents
1 Penn Court
Station Road, West Moors
Dorset. BH22 0JJ

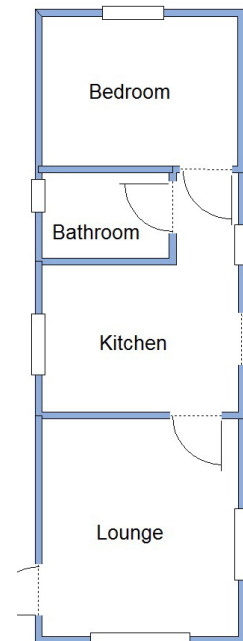
DORSET PARK HOMES

DRAFT

www.dorsetparkhomes.com

Telephone: 01202 877511

109 The Square, Oaktree Park, St Leonards, Ringwood. BH24 2RL



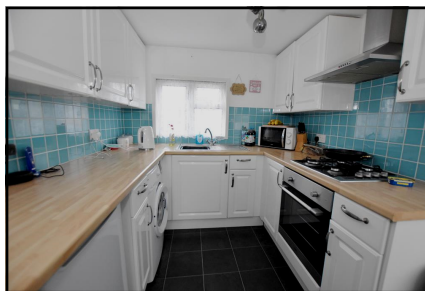
This drawing has been prepared for diagrammatic purpose only. Not to scale.

1-Bedroom Park Home - approx 30' x 10'

Accommodation & approximate room dimensions:

- **Kitchen:** approx 9'7" x 7'2". Range of base & wall cupboards. Built-in oven, hob & cooker hood. Space for washing machine & fridge. Door to garden.
- **Lounge:** approx 10'8" x 9'7". Cupboard housing combination gas boiler (untested). Door to garden.
- **Double Bedroom:** approx 9'7" x 7'4".
- **Bathroom:** modern suite comprising panelled bath with mixer tap & shower attachment. Wash basin & WC. Chrome towel rail. Inset spot lights.
- Gas Central Heating (system untested)
- PVCu Double-Glazing
- Delightful private, patio garden with Metal Shed
- Parking for 1 car
- Age Restriction 50+
- Pets Considered
- Residents Members Club on Park
- Popular Park between Ringwood & Ferndown and adjacent to protected forestry land. Useful convenience store in neighbouring holiday park.

Well Presented Park Home



Price: £89,950

Pitch Fee: approx £192.52 per month

Subject to Annual Review

Council Tax Band: 'A'

Tenure: 1983 Mobile Homes Act Agreement

VIEWING STRICTLY BY APPOINTMENT WITH THE VENDOR'S AGENT Dorset Park Homes 01202 877511

IMPORTANT NOTE: These particulars are believed to be correct but their accuracy is not guaranteed. They do not form part of any contract. Nothing in these particulars shall be deemed to be a statement that the property is in good structural condition or otherwise, nor that any of the services, appliances, equipment or facilities are in good working order or have been tested. Purchasers should satisfy themselves on such matters prior to purchase Ref.W04723

The recommended specialist in Park Home sales
Partner: Simon Dixon

