



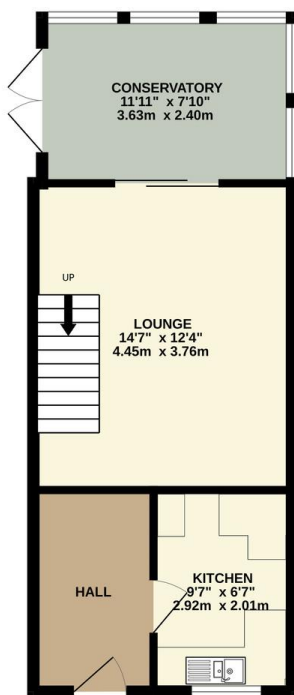
FOR SALE

2 Bed Semi-Detached House in Mablowe Field, Wigston LE18 3UJ
£240,000

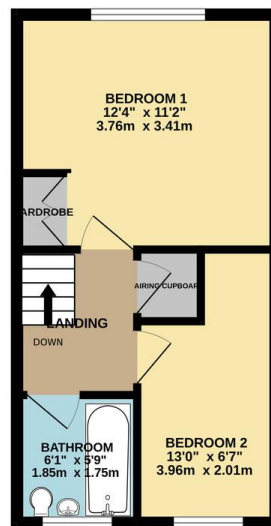
Stunning two bedroom semi detached home, located on one of the largest plots within the sought after Wigston Harcourt estate. This modern property is presented to show home standard throughout and features a bright and airy conservatory, providing additional living space. The property benefits from a beautifully landscaped, wedge shaped plot that offers plenty of outdoor space, with excellent potential for future development (subject to planning permission). Contact Phillips George Estate Agents today to arrange your viewing.



GROUND FLOOR
392 sq.ft. (36.4 sq.m.) approx.

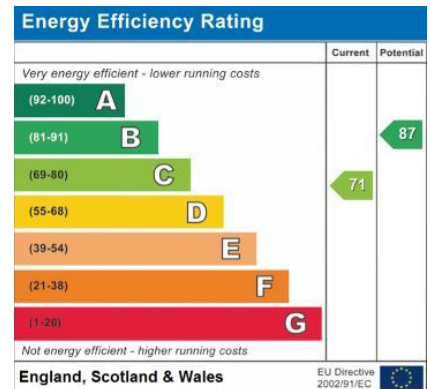


1ST FLOOR
298 sq.ft. (27.7 sq.m.) approx.



TOTAL FLOOR AREA: 690 sq.ft. (64.1 sq.m.) approx.

Whilst every attempt has been made to ensure the accuracy of the floorplan contained herein, measurements of doors, windows, rooms and any other items are approximate and no responsibility is taken for any error, omission or mis-statement. This plan is for illustrative purposes only and should be used as such by any prospective purchaser. The services, systems and appliances shown have not been tested and no guarantee as to their operability or efficiency can be given.
Made with Metropix ©2025



- Semi Detached
- Two Bedrooms
- Cul De Sac
- Modern Home
- Immaculate Presentation
- No Upward Chain
- Larger Wedged Plot
- Ample Off Road Parking

Agents Note: Whilst every care has been taken to prepare these sales particulars, they are for guidance purposes only. All measurements are approximate and for general guidance purposes only and whilst every care has been taken to ensure their accuracy, they should not be relied upon and potential buyers are advised to recheck the measurements.

