



**21 PENMAES**  
**PENTYRCH**  
**CARDIFF CF15 9QS**

ASKING PRICE OF  
**£450,000**



**DETACHED PROPERTY**



**4**



**1**



**2**



**2**

**\*\* FOUR BEDROOM DETACHED ON A LARGE PLOT \*\* GARAGE \*\*** A bright and spacious four bedroom detached family home on the sought after area of Pentyrch. Entrance hallway, cloakroom, large lounge, dining room opening to the modern fitted kitchen. To the first floor are four bedrooms and a family bathroom. Gas central heating. Double glazed windows. Large lawned rear garden. Lawned garage to front with a long driveway leading to the detached single garage. EPC Rating: tbc

#### LOCATION

Situated in the sought after village of Pentyrch which has a small parade of shops, GP surgery and a chemist, a local primary school, plus social and recreational facilities including rugby and cricket, tennis, bowls, squash, football and gardening clubs. Easy access to local countryside walks. The property also benefits from excellent transport links with easy access to the M4 and A470, plus a regular train service from nearby Taffs Well. The property is also within the Radyr Comprehensive catchment area.

#### ENTRANCE HALLWAY

Approached via a uPVC entrance door leading to the spacious hallway. Staircase to first floor with under stairs recess. Radiator.

#### CLOAKROOM

White suite comprising low level wc, vanity wash basin with storage below. Tiled flooring. Obscured glass window to side.

TENURE: FREEHOLD

COUNCIL TAX BAND: F

FLOOR AREA APPROX: TBC

VIEWING: STRICTLY BY APPOINTMENT

#### LOUNGE

14' 4" x 14' 1" (4.39m x 4.31m)

With large window overlooking the lawned front garden, an excellent sized primary reception. Radiator. Door to dining room.

#### DINING ROOM

12' 8" x 9' 4" (3.87m x 2.87m)

With patio doors to the rear garden, ample space for large family dining table. Laminate flooring. Radiator. Opening to the kitchen.

#### KITCHEN

12' 5" x 10' 5" (3.81m x 3.20m)

Modern fitted kitchen well appointed along three sides in Navy coloured shaker style fronts beneath marble effect laminate worktop surfaces. Inset sink with side drainer. Inset four ring electric hob with curved glass cooker hood above and oven below. Integrated dishwasher. Integrated washing machine. Matching range of eye level wall cupboards. Space for fridge freezer. Laminate flooring. Upvc double glazed door to side.

#### FIRST FLOOR LANDING

Approached via an easy rising staircase leading to the central landing area. Access to roof space. Large airing cupboard housing the 'Baxi Duo-tec' combi gas central heating boiler. Window to side.



# 21 PENMAES, PENTYRCH, CARDIFF CF15 9QS

## BEDROOM ONE

15' 8" x 9' 9" (4.78m x 2.99m)

Overlooking the entrance approach, a good sized primary bedroom. Radiator.

## BEDROOM TWO

12' 2" x 8' 9" (3.72m x 2.67m)

Aspect to front, a second double bedroom. Fitted wardrobe to one side. Radiator.

## BEDROOM THREE

11' 6" x 7' 6" (3.51m x 2.31m)

Overlooking the delightful rear garden, a good sized third bedroom. Radiator.

## BEDROOM FOUR

8' 5" x 6' 4" (2.57m x 1.95m)

Aspect to rear. Radiator.

## FAMILY BATHROOM

8' 4" x 5' 10" (2.55m x 1.79m)

A good sized family bathroom comprising low level wc, vanity wash basin with storage below, p-shaped bath with shower above and swivel shower screen. Tiled flooring. Wall tiling to splash back areas. Obscured glass window to rear. Recessed spotlights. Heated towel rail.

## OUTSIDE

### REAR GARDEN

A good sized west facing rear garden comprising paved patio and lawn to rear and side with beds of plants, shrubs and maturing trees/conifers. Pathway to side leading to gate giving access to front.

### FRONT GARDEN

A good sized area of lawn to front with inset beds of plants and shrubs. Long driveway leading to the garage.

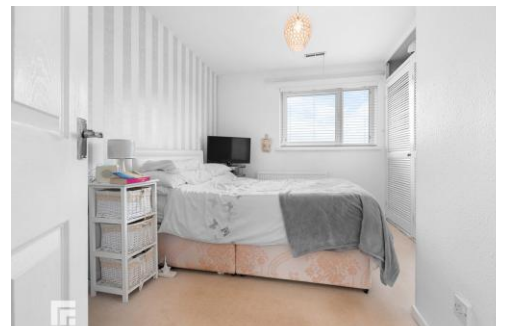
## GARAGE

Detached single garage with up and over access door.





# 21 PENMAES, PENTYRCH, CARDIFF CF15 9QS





# 21 PENMAES, PENTYRCH, CARDIFF CF15 9QS



21 PENMAES, PENTYRCH, CARDIFF CF15 9QS

**Floorplan & EPC to be inserted here**

**RADYR 029 2084 2124**

Radyr, 6 Station Road, Radyr, Cardiff, South  
Glamorgan, CF15 8AA



**Important Notice:** These particulars are prepared for guidance only and do not form whole or any part of any offer or contract. Whilst the particulars are given in good faith, they are not to be relied upon as being a statement or representation of fact. They are made without responsibility on the part of MGY Ltd or Vendor/lessor and the prospective purchaser/lessee should satisfy themselves by inspection or otherwise as to their accuracy. Neither MGY Ltd nor anyone in their employ, or the vendor/lessor, imply, make or give any representation/warranty whatsoever in relation to this property.

**MGY.CO.UK**