



Zenith Close, London

£440,000 Leasehold

Mile are pleased to offer this stunning two bedroom flat for sale. The property consists of two double bedrooms, two bathrooms (one being en-suite), a large reception room with a semi open plan fully fitted kitchen. The Property also benefits from an allocated secure parking space and a private balcony. Located in the highly sought after Zenith Close Development, only a short 3 min walk to ASDA and MORRISONS and a 10 min walk to Colindale Station. MUST BE SEEN. EPC Rating B.

- Two Bedroom Apartment
- SECURE GATED PARKING SPACE
- Fully Fitted Kitchen
- Private balcony
- Modern

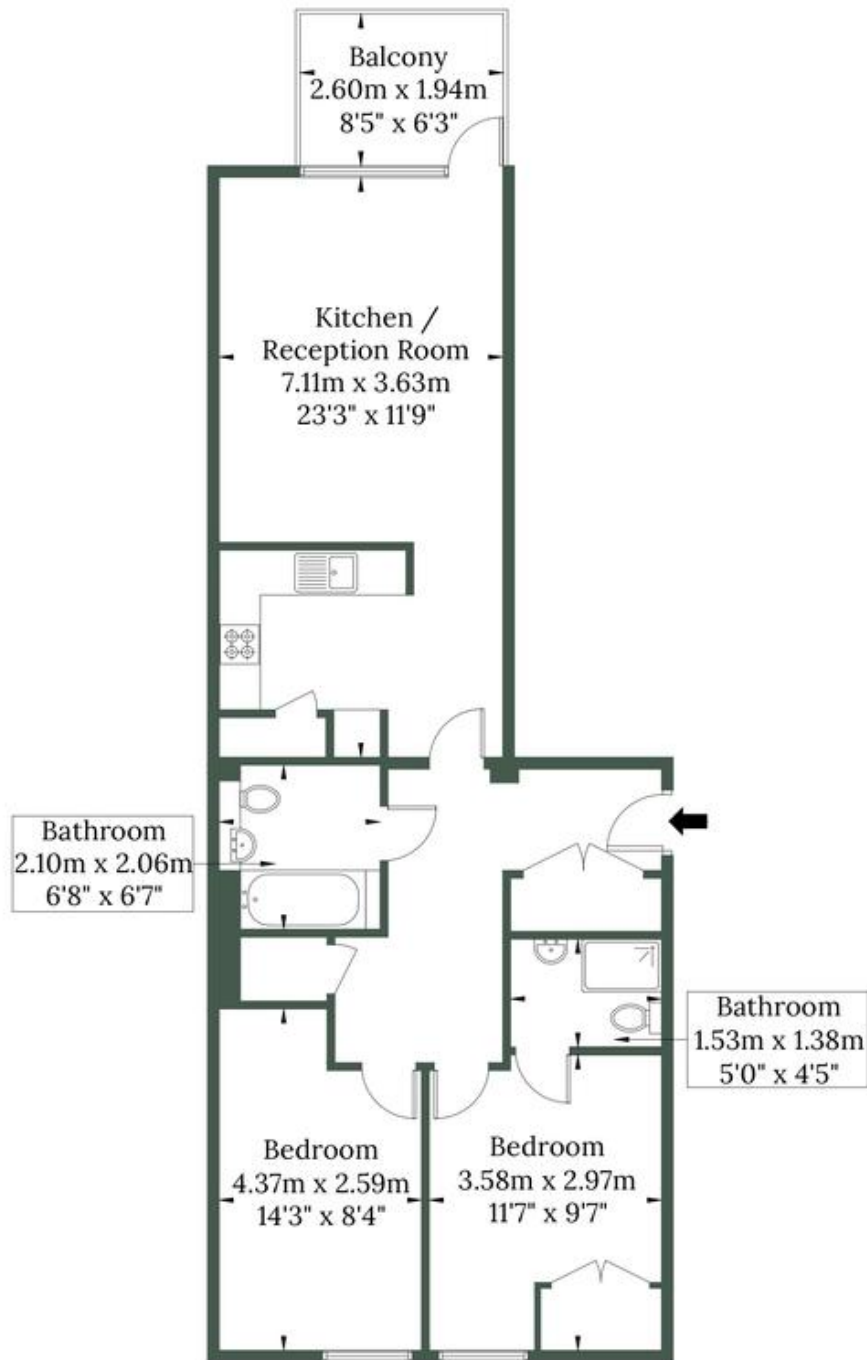
- Close to Local Shops
- Close to Colindale Station
- Communal Gardens
- Highly Sought After
- EPC RATING B

Zenith Close, NW9 6FD

Approx Gross Internal Area = 69.5 sq.m / 748 sq.ft

Balcony = 5 sq.m / 53 sq.ft

Total = 74.5 sq.m / 801 sq.ft



Ground Floor

The Floor plan is not to scale and measurements and areas shown are approximate and therefore should be used for

MONEY LAUNDERING REGULATIONS 2003: Intending purchasers will be asked to produce identification documentation at a later stage and we would ask for your co-operation in order that there will be no delay in agreeing the sale.

General: While we endeavour to make our sales particulars fair, accurate and reliable, they are only a general guide to the property and, accordingly, if there is any point which is of particular importance to you, please contact the office and we will be pleased to check the position for you, especially if you are contemplating travelling some distance to view the property.

Measurements: These approximate room sizes are only intended as general guidance. You must verify the dimensions carefully before ordering carpets or any built-in furniture.

Services: Please note we have not tested the services or any of the equipment or appliances in this property, accordingly we strongly advise prospective buyers to commission their own survey or service reports before finalising their offer to purchase.