



Beechcroft Avenue, London

£3,495 pcm %tenure%

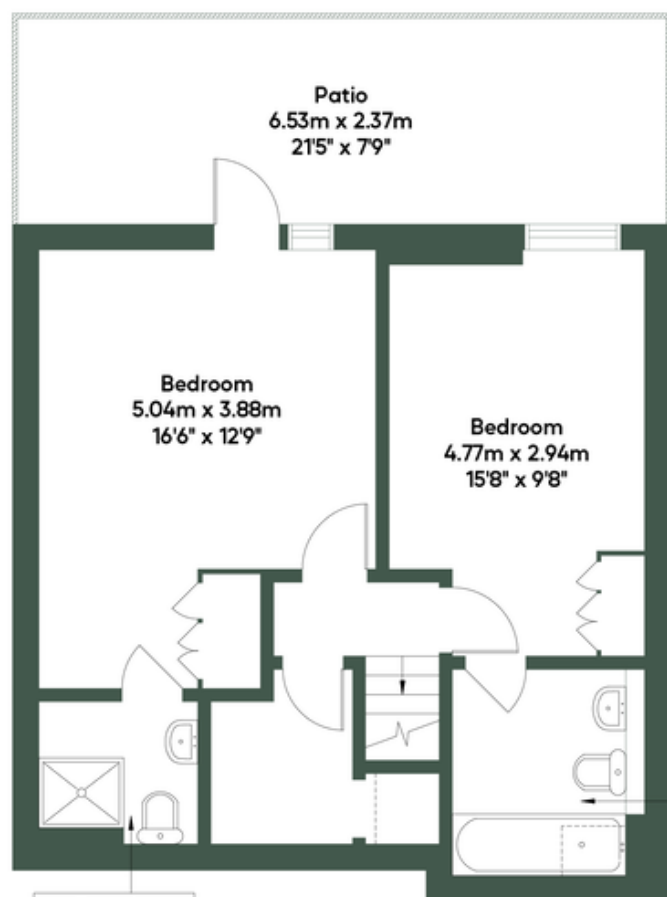
Mile... are delighted to offer this stunning duplex flat, located in Golders Green, the property benefits from two double bedrooms and two bathrooms, both being en-suite that are fitted to a high specification. The property also features a large open-plan kitchen/living room, private parking as well as plenty of storage space. The property is located a 10 minutes walk away from Golders Green tube station on the Northern Line as well as being close to local shops and amenities.

AVAILABLE NOW !!

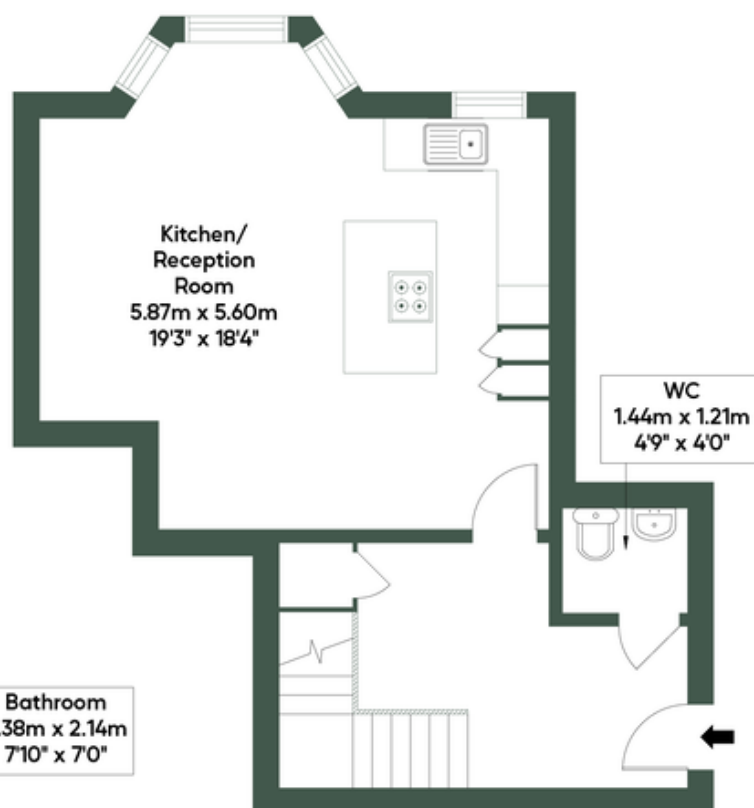
- Brand new
- High Speciation
- 975 sq.ft
- Two Double Bedrooms
- Duplex
- Private Underground Parking
- Close to Local Amenities
- Great transport links
- MUST BE SEEN
- Available Now

BEECHCROFT AVENUE, NW11

Approximate Gross Internal Area = 90.58 sq.m / 975 sq.ft



Lower Ground Floor



Ground Floor



MONEY LAUNDERING REGULATIONS 2003: Intending purchasers will be asked to produce identification documentation at a later stage and we would ask for your co-operation in order that there will be no delay in agreeing the sale.

General: While we endeavour to make our sales particulars fair, accurate and reliable, they are only a general guide to the property and, accordingly, if there is any point which is of particular importance to you, please contact the office and we will be pleased to check the position for you, especially if you are contemplating travelling some distance to view the property.

Measurements: These approximate room sizes are only intended as general guidance. You must verify the dimensions carefully before ordering carpets or any built-in furniture.

Services: Please note we have not tested the services or any of the equipment or appliances in this property, accordingly we strongly advise prospective buyers to commission their own survey or service reports before finalising their offer to purchase.