



Cefn Road Upper, £180,000

- Two reception rooms
- Ample green spaces nearby
- Walking and cycling paths
- Tranquil yet convenient
- Highly sought after location
- Potential for personalisation
- Family bathroom
- EPC Rating: E



 3
  1
  2



About the property

This semi-detached house, currently listed for sale, presents an exceptional opportunity for those with a vision for modernisation and personalisation. The property, though in need of updating, offers ample living space with its three bedrooms, one bathroom, and two reception rooms.

Despite requiring some modernising, this house holds a wealth of potential for the right buyer. The single kitchen, while functional, offers a blank canvas for those wishing to create their own culinary haven. The two reception rooms provide plentiful space for both relaxation and entertaining, whilst the three bedrooms offer comfortable accommodation.

The property is situated in a sought-after location, surrounded by ample green spaces, walking routes and cycling paths. This house offers a unique blend of tranquillity and convenience, providing an outdoor lifestyle whilst still being within easy reach of essential amenities.

The house has an EPC rating of E and comes under the council tax band B.



Accommodation

Entrance Hallway

Outside

Lounge

14' 1" x 8' 5" Max (4.29m x 2.57m Max)

Dining Room

14' 1" x 11' 4" (4.29m x 3.45m)

Kitchen

9' 8" Max x 20' 3" Max (2.95m Max x 6.17m Max)

Stairs To First Floor Landing

Bedroom One

14' 1" x 11' 4" Max plus recess (4.29m x 3.45m
Max plus recess)

Bedroom Two

11' 8" Max x 8' 5" Max (3.56m Max x 2.57m Max)

Bedroom Three

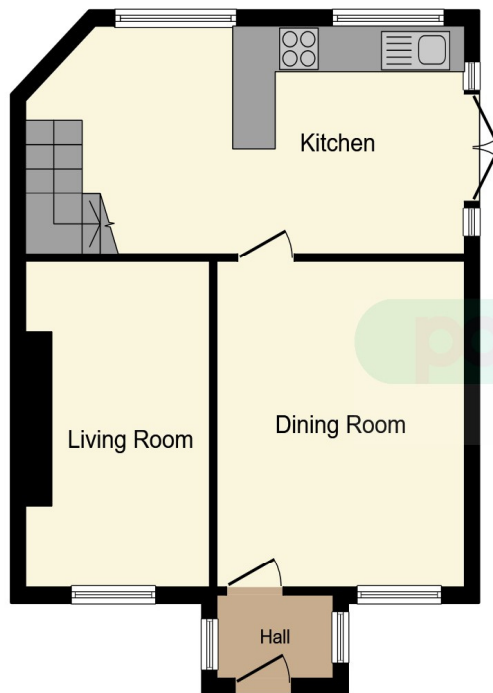
6' 8" x 12' 7" (2.03m x 3.84m)

Bathroom

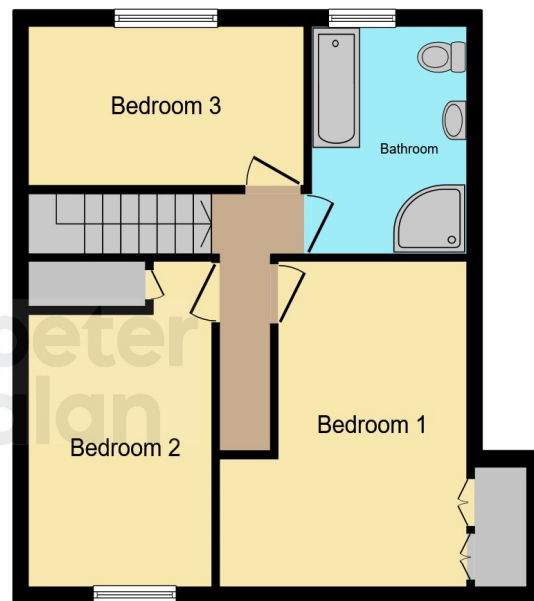
01495 231199

blackwood@peteralan.co.uk

Floorplan



Ground Floor



First Floor

This floor plan is for illustrative purposes only. It is not drawn to scale. Any measurements, floor areas (including any total floor area), openings and orientation are approximate. No details are guaranteed, they cannot be relied upon for any purpose and they do not form part of any agreement. No liability is taken for any error, omission or misstatement. A party must rely upon its own inspection(s). Powered by www.focalagent.com



Important Information

Note while we endeavour to make our sales details accurate and reliable, if there is any point which is of particular interest to you, please contact the office and we will be pleased to confirm the position for you. We have not personally tested any apparatus, equipment, fixtures, fittings or services and cannot verify they are in working order or fit for their purposes. Nothing in these particulars is intended to indicate that carpets or curtains, furnishings or fittings, electrical goods (whether wired or not). Gas fires or light fittings or any other fixtures not expressly included form part of the property offered for sale. This computer generated Floorplan, if applicable, is intended as a general guide to the layout and design of the property. It is not to scale and should not be relied upon for dimensions. Tenure: We cannot confirm the tenure of the property as we have not had access to the legal documents. The buyer is advised to obtain verification from their solicitor or surveyor.

Peter Alan Limited is registered in England and Wales under company number 2073153, Registered Office is Cumbria House, 16-20 Hockliffe Street, Leighton Buzzard, Bedfordshire, LU7 1GN. VAT Registration Number is 500 2481 05. For activities relating to regulated mortgages and non-investment insurance contracts, Peter Alan Limited is an appointed representative of Connells Limited which is authorised and regulated by the Financial Conduct Authority. Connells Limited's Financial Services Register number is 302221. Most buy-to-let