



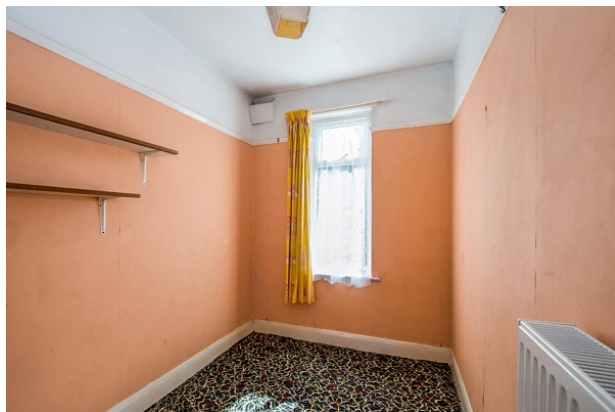
Sunnymead Avenue, Gillingham, Kent **Offers Over £215,000**







YOUR MOVE







Sunnymead Avenue,  
Gillingham, Kent

**Offers Over £215,000**

### Property Description

The minute you walk through the door you instantly feel like your home. Offered to the market with no onward chain is this three bedroom terraced home,. The accommodation offers lounge with bay window, dining room, kitchen, utility area with door leading out onto a lovely rear garden with patio seating area. Upstairs there are three good sized bedrooms and a family bathroom. Although a little TLC is required, you can see the potential for this to be a beautiful family home. This perfect home awaits the perfect family. EPC awaited.

### Our View

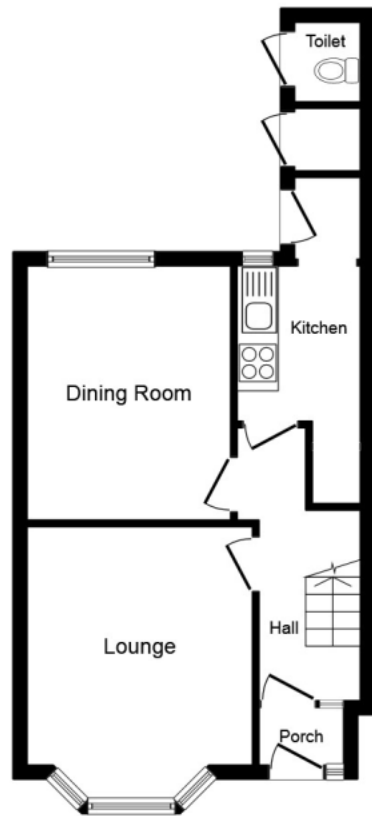
In our opinion this would be an ideal family home. The current owners enjoyed many happy years here and it has been a much loved property. The warm feeling it gives you when you step inside, you can't help but fall in love with this house. Call today to book your viewing as we feel this won't be on the market for long.

### Location

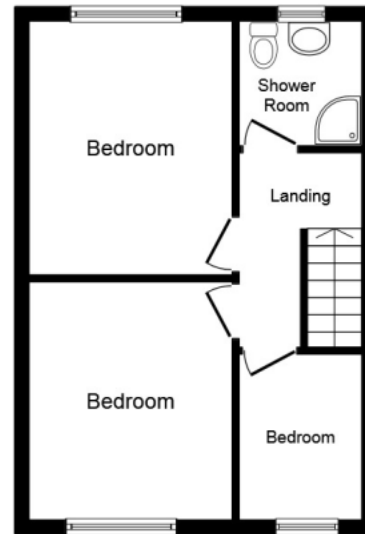
The historic town of Gillingham benefits from national railway links to London Bridge, Victoria, Waterloo and St. Pancras International train station some of which are under 1 hour commute. Also railway routes to the Kent Coast such as Margate in under 1 hour.



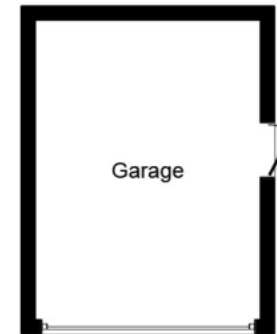
**EPC Awaited**  
**For full EPC please contact the branch**



**Ground Floor**



**First Floor**



**Garage**

This plan is for illustration purposes only and may not be representative of the property. Plan not to scale.

Powered by audioagent.com

IMPORTANT NOTE TO PURCHASERS: We endeavour to make our sales particulars accurate and reliable, however, they do not constitute or form part of an offer or any contract and none is to be relied upon as statements of representation or fact. The services, systems and appliances listed in this specification have not been tested by us and no guarantee as to their operating ability or efficiency is given. All measurements have been taken as guide to prospective buyers only, and are not precise. Floor plans where included are not to scale and accuracy is not guaranteed. If you require clarification or further information on any points, please contact us, especially if you are travelling some distance to view. Fixtures and fittings other than those mentioned are to be agreed with the seller.

Your Move is a trading name of your-move.co.uk, registered in England at Newcastle House, Albany Court, Newcastle Business Park, Newcastle upon Tyne NE4 7YB (number 01864469).

Balmoral Road, Gillingham, Kent, ME7 4PD  
01634 852345 \* Gillingham@your-move.co.uk

\*Calls may be recorded and/or monitored for training and/or security purposes.

