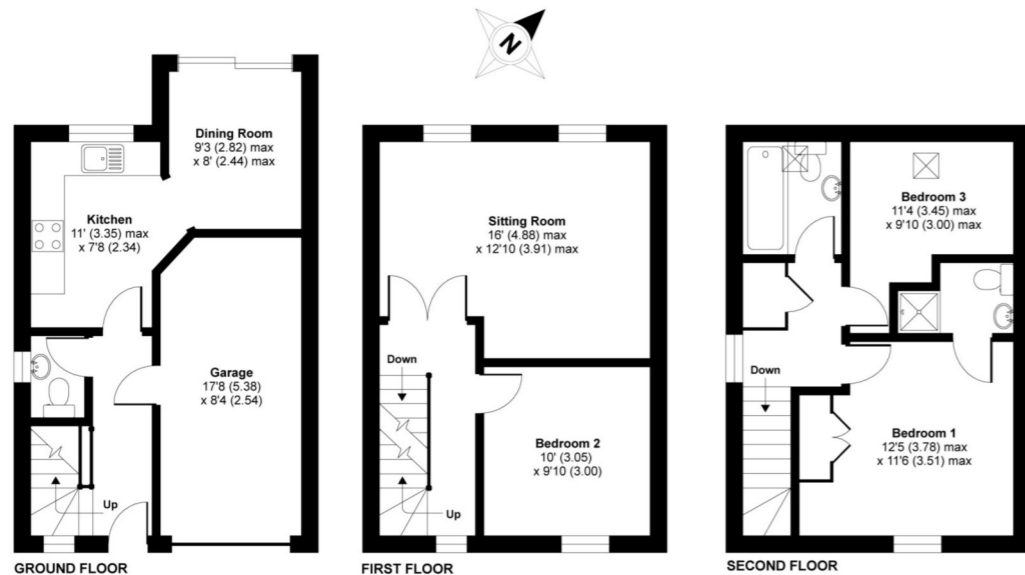


Alstone Mews, Cheltenham, GL51

APPROX. GROSS INTERNAL FLOOR AREA 1154 SQ FT 107.2 SQ METRES



Whilst every attempt has been made to ensure the accuracy of the floor plan contained here, measurements of doors, windows and rooms are approximate and no responsibility is taken for any error, omission or misstatement. These plans are for representation purposes only as defined by RICS Code of Measuring Practice and should be used as such by any prospective purchaser. Specifically no guarantee is given on the total square footage of the property if quoted on this plan. Any figure given is for initial guidance only and should not be relied on as a basis of valuation.

1 Kew Place, Cheltenham, Gloucestershire, GL53
7NG
T: 01242 246980

perrybishop.co.uk

Disclaimer: These particulars should not be relied upon as fact and are not an offer or contract. The seller does not make, nor do we give any warranty. All information should be verified, no survey has been done or testing completed.

17 Alstone Mews Cheltenham GL51 8EU



Modern three storey townhouse | Three bedrooms | Two bathrooms
Garage and driveway parking | Low maintenance garden | EPC C

£265,000

Perry Bishop
and Chambers

the agent who keeps you informed



17 Alstone Mews

Cheltenham GL51 8EU



3 Bedrooms



2 Bathrooms



2 Receptions

A well presented, modern town house with the benefit of a single garage and off road parking, located in a quiet cul-de-sac within walking distance of the town centre, railway station, Montpellier and Waitrose supermarket.

In brief the internal accommodation provides an entrance hall, fitted kitchen and dining room on the ground floor, the first floor provides a large sitting room and bedroom with the top floor providing a family bathroom, master bedroom with en-suite and further bedroom. There is a garden to the rear with fence boundary and internal single garage.

Additional benefits include double glazing throughout and gas fired central heating.

Directions

From Cheltenham town centre proceed along St. George's Road, continue on and cross Gloucester Road at the traffic lights, continue on and Alstone Mews is the fourth turning on the right hand side.

Services & Tenure

We believe the property is served by mains electricity, gas, water and drainage. The vendor informs us that the Tenure is Freehold. The above should be verified by your Solicitor or Surveyor.

Local Authority

Cheltenham Borough Council

Ref: 71027082/25603/RM

