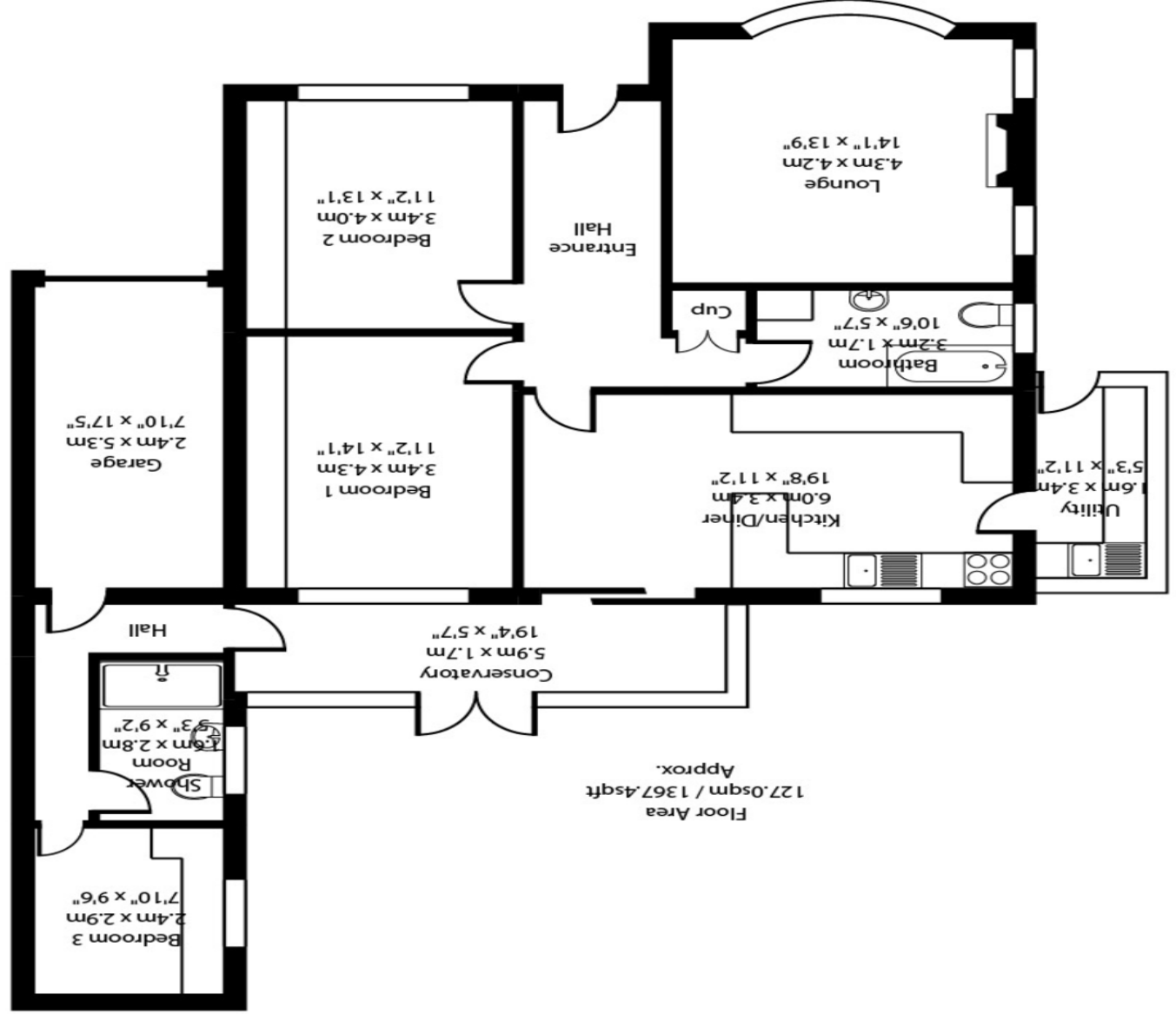




offices also at Bakewell, Banner Cross and Hathersage

Whilst every attempt has been made to ensure the accuracy of the floor plan contained here, no responsibility is taken for incorrect measurements of doors, windows, appliances and rooms or any error, omission or misstatement. Exterior and interior walls are drawn to scale based on interior measurements. Any figure given is for initial guidance only and should not be relied on as a basis of valuation. These plans are for marketing purposes only and should be used as such by any prospective purchaser. Specifically no guarantee is given on the total square footage of the property if quoted on this plan.



DECEPTIVELY SPACIOUS BUNGALOW WITH LOVELY GARDENS. ELR are pleased to introduce to the market this lovely deceptively spacious 3 bedroom detached bungalow situated upon the ever popular & highly sought after, Moorgate Road. The property is approached via the spacious block paved driveway with well maintained front gardens & with a side single garage. Leading off the rear facing dining area is a small conservatory with a beautiful aspect of the rear gardens. From here is a courtesy door to the garage & passageway to bedroom 3 with adjoining en suite facilities. This would make a fantastic sleeping area for the dependant relative or teenager.

The remaining bedrooms are both of double size with fitted wardrobes. The utility room has plumbing & space for all the white goods. This lovely bungalow has double glazed windows throughout & an alarm system.

With bus stops close by upon Moorgate Road serving the Hospital & town centre whilst the M1 is within 1 mile.



EADON LOCKWOOD & RIDDLE
SALES • LETTINGS • SURVEYS



- An extended 3 bedroom detached bungalow
- Rear bedroom with en suite facilities
- Double glazed throughout with alarm system
- Utility room off the kitchen
- Lovely well maintained gardens
- Small rear conservatory
- Block paved driveway & single garage
- No upward chain
- Approx 1 mile to Sheffield Parkway/M1
- Deceptively spacious within

