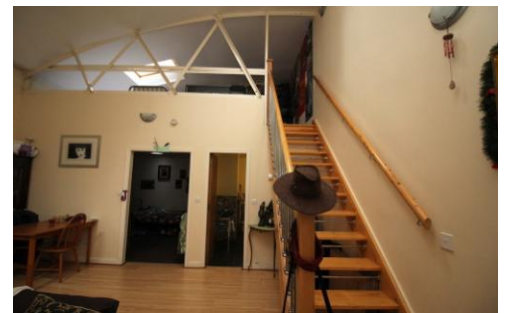




WATTS & CO
PROPERTY DONE PROPERLY



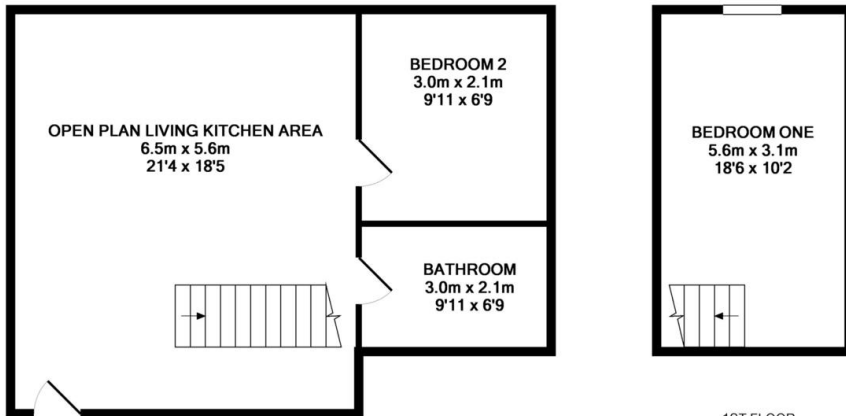
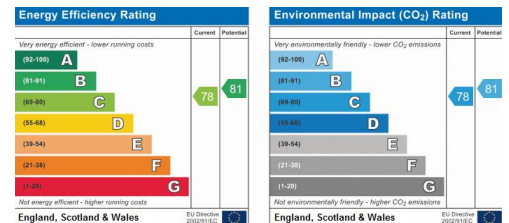
Bond Street

Dewsbury, WF13 1AU

Asking Price Of £87,500

Property Summary

Watts & Co are pleased to welcome to the market this TWO BEDROOM apartment in the popular DEWSBURY TOWN CENTRE location. The property is a short walk from the TRAIN STATION and is currently let at £550pcm giving this a YIELD of 7.54%. The property has a MEZZANINE bedroom, a bathroom, an OPEN PLAN LIVING KITCHEN area and a second bedroom. The property is finished to a GOOD STANDARD throughout.



GROUND FLOOR
APPROX. FLOOR
AREA 53.6 SQ.M.
(577 SQ.FT.)

TOTAL APPROX. FLOOR AREA 70.7 SQ.M. (761 SQ.FT.)

Whilst every attempt has been made to ensure the accuracy of the floor plan contained here, measurements of doors, windows, rooms and any other items are approximate and no responsibility is taken for any error, omission, or mis-statement. This plan is for illustrative purposes only and should be used as such by any prospective purchaser. The services, systems and appliances shown have not been tested and no guarantee as to their operability or efficiency can be given
Made with Metropix ©2017

1ST FLOOR
APPROX. FLOOR
AREA 17.1 SQ.M.
(184 SQ.FT.)

- Two Bedrooms
- Apartment
- Mezzanine Bedroom
- Open Plan Living Kitchen
- Bathroom
- Dewsbury Town Centre
- Close To Train Station
- Good Commuter Links
- Gas Central Heating
- Let At £550pcm - Yield Of 7.54%

Office 8
Burley Hill Trading Estate
Leeds
West Yorkshire
LS4 2PU

www.morrison-watts.co.uk
info@watts-co.co.uk
0113 278 5555

Agents Note: Whilst every care has been taken to prepare these sales particulars, they are for guidance purposes only. All measurements are approximate and for general guidance purposes only and whilst every care has been taken to ensure their accuracy, they should not be relied upon and potential buyers are advised to recheck the measurements