



Bloxham
Oxfordshire

Bloxham, Oxfordshire

A Most Exquisite Two Bedroom Thatched 'Chocolate Box' Style Cottage Set in the Most Desirable Location Dating Back to What We Believe to be the 1780's.

The property briefly comprises:
Entrance Hall, Lounge, Kitchen, Dining Room, Two Bedrooms, Bathroom and Separate Cloakroom.
Outside the property benefits from a Pretty Cottage Style Garden.

The picturesque village of Bloxham offers many amenities including a convenience store, Post Office, hairdressers, three Public Houses offering good food, doctors and dentist. The village has a good community spirit and offers many clubs .
Also within the village there is the Bloxham Church of England Primary School and secondary education at the Warriner School. Bloxham School is an independent co-educational school catering for boarders and day pupils. Tudor Hall Girls School is approximately 2 miles outside of the village. Further comprehensive facilities can be found in both Banbury and Oxford whilst access to the M40 motorway can be gained at Junctions 10 or 11. Mainline stations are also available from Banbury and Bicester.

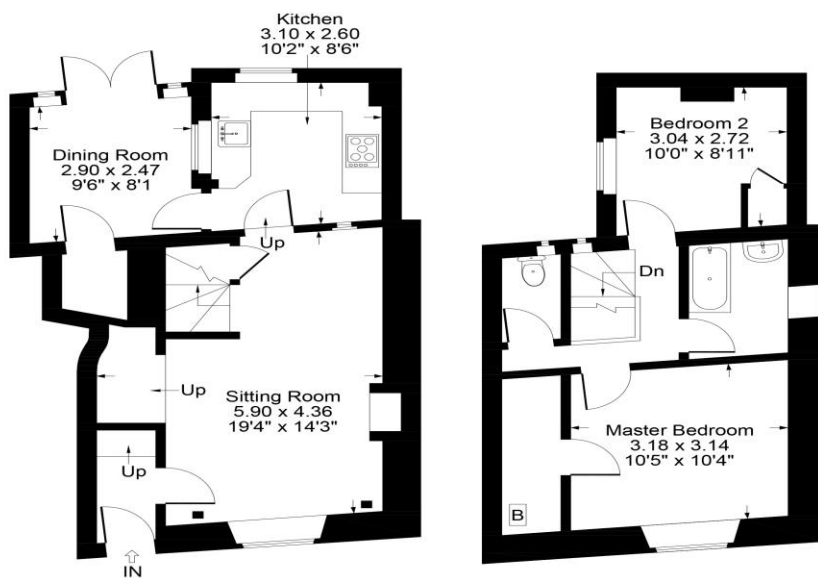




- Entrance Hall
- Lounge with Open Stone Fireplace and Exposed Beams
- Kitchen
- Dining Room with Glass Roof and Double Doors Opening to the Rear
- Bedroom One with Walk-In Wardrobe
- Bedroom Two
- Bathroom
- Separate Cloakroom
- Pretty Cottage Style Rear Garden
- Period Features
- Gas Central Heating



Guide Price: £315,000



Local Authority
Cherwell District Council

Tenure
Freehold

Additional Information

Banbury c. 3 miles
Deddington c. 4 miles
Chipping Norton c. 9 miles
Oxford c. 23 miles
Birmingham c. 55 miles
London c. 81 miles

M40 access c. 6 miles

Banbury to London Marylebone c. 1 hour.

Mark David
ESTATE AGENTS

Market House, Market Square, Deddington, Oxfordshire, OX15 0SB
Tel: 01869 338898
Fax: 01869 338337
Email: deddington@mark-david.co.uk
www.mark-david.co.uk

Important Notice

Mark David Estate Agents for themselves and their clients give notice that:-

1. They are not authorised to make or give representation or warranty in relation to this property, either on their own behalf or on behalf of the Seller. They assume no responsibility for any statement made in these particulars. These particulars do not form part of any offer or contract and must not be relied upon as statements or representations of fact.
2. Whilst every attempt has been made to ensure the accuracy of the floorplan contained here, measurements of doors, windows, rooms and any other items are approximate and no responsibility is taken for any error, omission, or mis-statement.
3. All areas, measurements or distances are approximate. The particulars are intended for guidance only and are not necessarily comprehensive. A wide angle lens may have been used in photography. Mark David Estate Agents have not tested appliances or services and it should not be assumed that the property has all necessary planning, building regulation and other consents. Buyers must satisfy themselves with the property by inspection or otherwise.
4. Reference to any mechanical or electrical equipment does not constitute a representation that such equipment is capable of fulfilling its function and prospective Buyers must make their own enquiries.
5. They have no responsibility for any expenses or costs incurred by prospective Buyers in inspecting properties which have been sold, let or withdrawn. Applicants are advised to contact the Agent to check availability and any other information of particular importance to them, prior to inspecting the property, particularly if traveling some distance.