



Hempton
Oxfordshire

Hempton, Oxfordshire

A Lovely Bright Three Bedroom Detached Bungalow that has been Extended Creating Spacious and Comfortable Living Accommodation.

The property briefly comprises:
Entrance Hall, Cloakroom, Lounge, Inner Hall, Kitchen / Dining Room, Three Bedrooms and Bathroom.
Outside the property has parking for two vehicles, a brick built office and utility store room, patio area and large garden.

Hempton is a charming small village situated approximately one mile west of Deddington, yet still remaining within the parish of Deddington itself. The neighbouring village of Deddington offers many amenities including several shops providing for everyday needs, Post Office, Health and Community Centres, library, hotels and restaurants, recreation ground and for people wishing to worship there is the Church of St Peter and St Paul, the Congregational Chapel and the Wesleyan Chapel. Also within the village there is the Church of England primary school plus Hempton falls within the Warriner catchment for secondary education. A further comprehensive range of facilities can be found in both Oxford and Banbury whilst access to the M40 motorway can be gained at either junction 10 or 11.

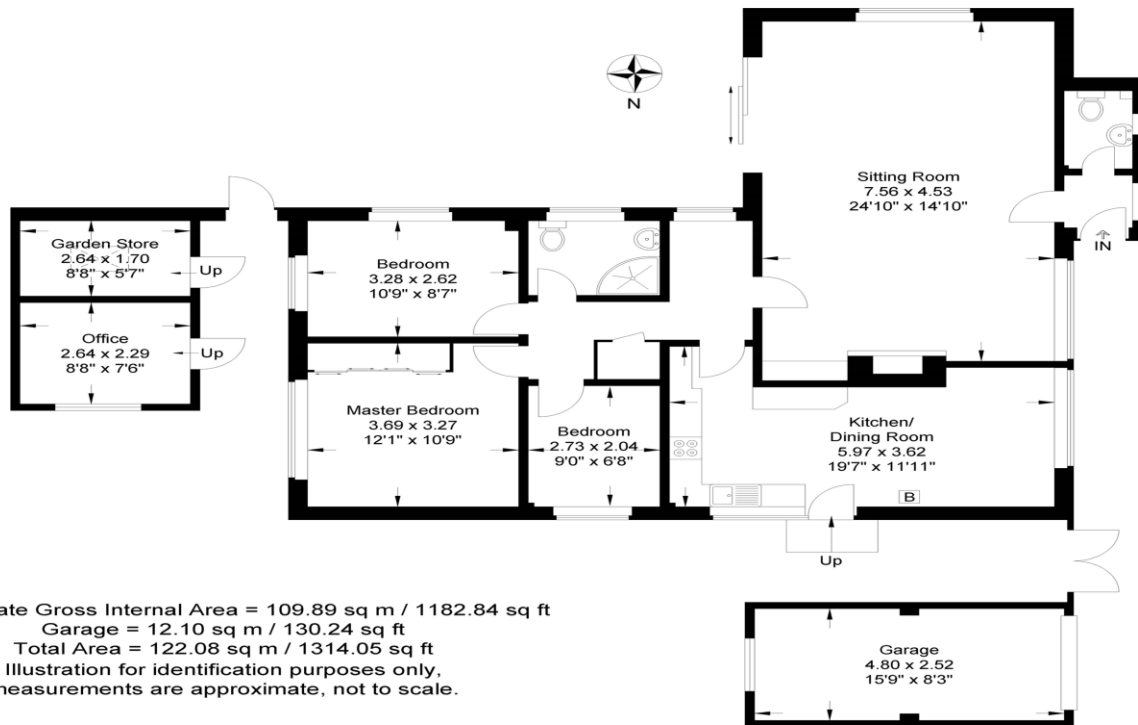




- Entrance Hall
- Cloakroom
- Lounge
- Inner Hall
- Kitchen / Dining Room
- Three Bedrooms
- Bathroom
- Parking for two vehicles
- Brick Built Office and Utility Store Room
- Large Garden
- Patio Area



Guide Price: £360,000



Local Authority
 Cherwell District Council

Tenure
 Freehold

Additional Information
 Deddington c. 1 mile

Banbury c. 7 miles

Bicester c. 13 miles

Oxford c. 19 miles

Birmingham c. 59 miles

London c. 75 miles

London via Bicester North or
 Banbury, c. 1 hour.



Market House, Market Square, Deddington, Oxfordshire, OX15 0SB
 Tel: 01869 338898
 Fax: 01869 338337
 Email: deddington@mark-david.co.uk
 www.mark-david.co.uk

Important Notice

Mark David Estate Agents for themselves and their clients give notice that:-

1. They are not authorised to make or give representation or warranty in relation to this property, either on their own behalf or on behalf of the Seller. They assume no responsibility for any statement made in these particulars. These particulars do not form part of any offer or contract and must not be relied upon as statements or representations of fact.
2. Whilst every attempt has been made to ensure the accuracy of the floorplan contained here, measurements of doors, windows, rooms and any other items are approximate and no responsibility is taken for any error, omission, or mis-statement.
3. All areas, measurements or distances are approximate. The particulars are intended for guidance only and are not necessarily comprehensive. A wide angle lens may have been used in photography. Mark David Estate Agents have not tested appliances or services and it should not be assumed that the property has all necessary planning, building regulation and other consents. Buyers must satisfy themselves with the property by inspection or otherwise.
4. Reference to any mechanical or electrical equipment does not constitute a representation that such equipment is capable of fulfilling its function and prospective Buyers must make their own enquiries.
5. They have no responsibility for any expenses or costs incurred by prospective Buyers in inspecting properties which have been sold, let or withdrawn. Applicants are advised to contact the Agent to check availability and any other information of particular importance to them, prior to inspecting the property, particularly if traveling some distance.