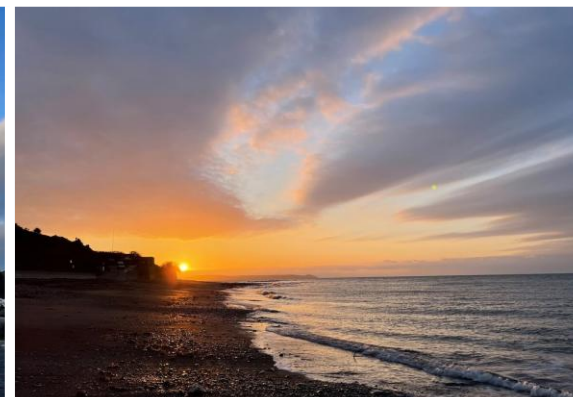




Boasting far reaching coastal views, this four bedroom, semi-detached sea-side home will benefit from balconies, gardens and driveway parking.

Offers In Excess Of £500,000



Trerose Coombe, Downderry

FULL DESCRIPTION

An exciting development of coastal properties in the popular village of Downderry.

Set within walking distance to the beach, these homes are set over four floors and offer far reaching views from the balcony and upper floors.

Benefitting from a garage, four bedrooms with two en-suites, these family homes offer open plan loft style living within sight of the Whitsand Bay coastline.

Expertly designed, these semi-detached houses will boast air source heating, double glazing, driveway parking for two cars and a garden set to the rear offering elevated views.

These new homes have been planned to take full advantage of the natural contours of the land, incorporating flexible living whilst maximising the views which can be enjoyed from the various locations throughout each of the properties.

Downderry and Seaton are coastal villages which share a beautiful sandy beach. There is a regular bus service, a village church, primary school and numerous eateries, one with a lovely decked seating area overhanging the sea.



4



3

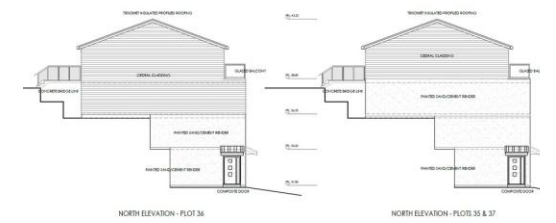
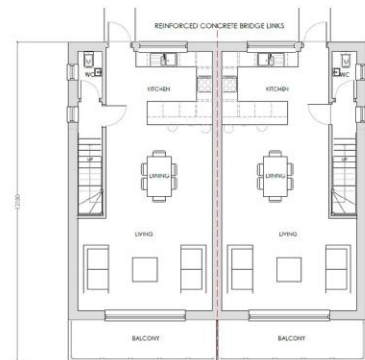
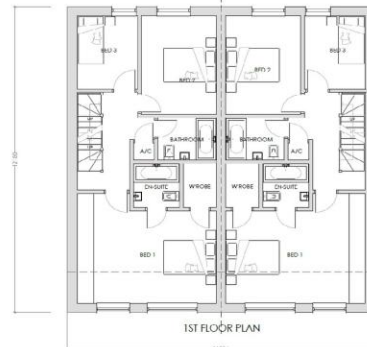
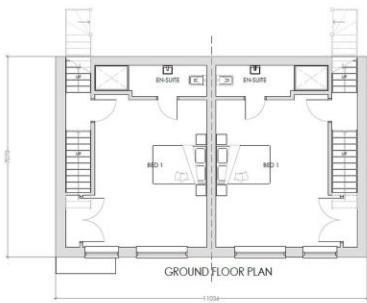
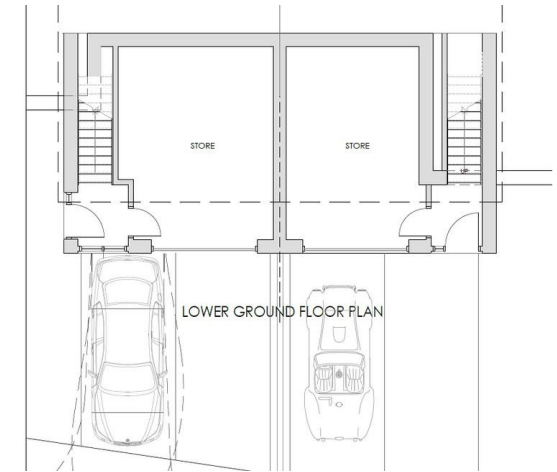


1



EPC

TB
C



NOTE PAGE

CONTACT

1 Fore Street, Torpoint,
Cornwall, PL11 2AA

E sales@idealhomes-sw.co.uk

T 01752 812 333

idealhomes-sw.co.uk

Find us on..

