



STYLISH AND BEAUTIFULLY PRESENTED FOUR-DOUBLE BEDROOM EXTENDED EDWARDIAN 'FAMILY HOME'. The property has benefited from substantial re-modelling and improvement throughout yet retains many fine period features and characteristics reminiscent of a bygone era and would ideally suit discerning purchasers looking for a 'ready to move into' home of quality that is easily accessible to all amenities including good schools, excellent transport facilities including Alexandra Palace National Rail & Wood Green Tube stations (20/25 Mins City/West End) and the wonderful green surroundings of Alexandra Park and palace itself.

**Barratt Avenue, Alexandra Park, London, N22 7EZ**

**£1,150,000 Freehold**

HOBARTS ESTATE AGENTS

3 Crescent Road, Alexandra Park, London, N22 7RP

[sales@hobartsproperty.co.uk](mailto:sales@hobartsproperty.co.uk)

[www.hobarts.co.uk](http://www.hobarts.co.uk)

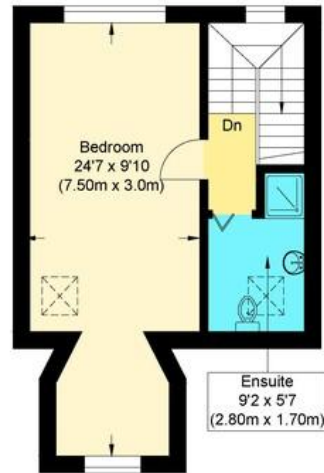
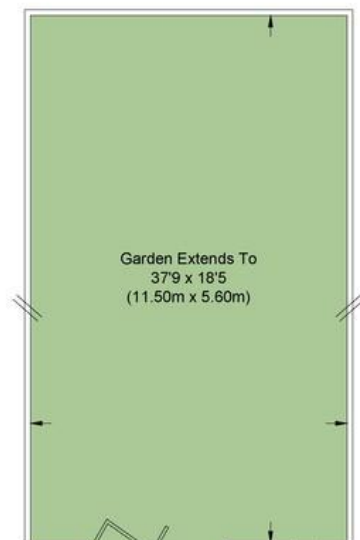
0208 889 4322





- End-Terraced
- Four-Double Bedrooms
- Stunning 18'6 x 17' Fitted Kitchen/Diner
- Two Bath/Shower Rooms with WC's (One En-Suite)
- Close to Ofsted Good schools

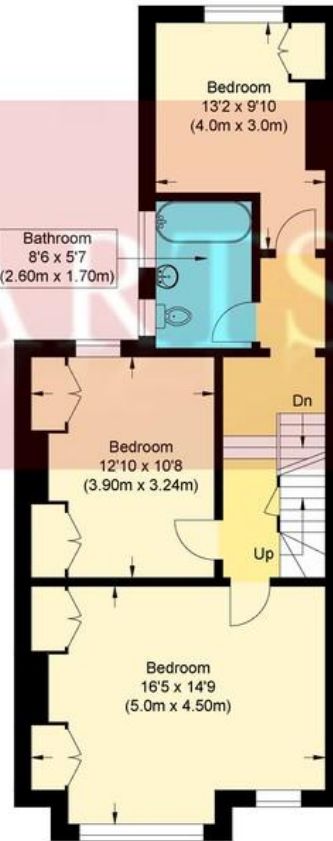
- Edwardian Family Home
- Two-Inter Communicating Reception Rooms
- Guest Cloaks/WC
- Close to Alexandra Park & Palace
- 20/25 Mins City/West End



Second Floor



Ground Floor



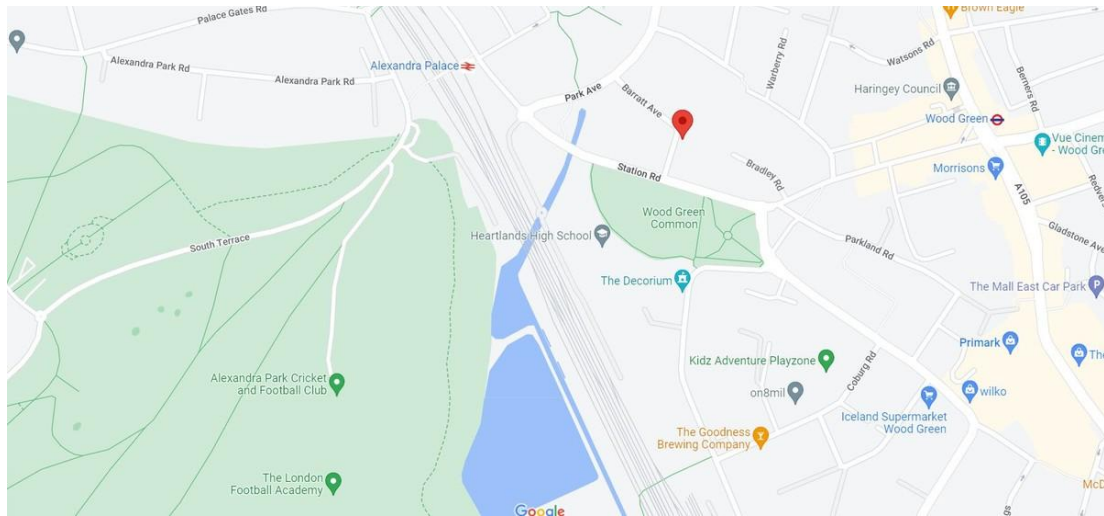
First Floor

**Barratt Ave, Alexandra Park, N22 7EZ**

Approximate Gross Internal Floor Area : 160.80 sq m / 1730.83 sq ft

Illustration for identification purposes only, measurements are approximate, not to scale.





%epcGraph\_c\_1\_310%

**Tenure:**  
Freehold

**Ground rent:**  
%groundRent%

**Service Charges:**  
%serviceCharge%

**Local Authority:**  
Haringey London  
Borough Council

**Viewings:**  
Strictly by appointment via  
HOBARTS ESTATE AGENTS  
020 8889 4322

**Contact:**  
3 Crescent Road  
London N22 7RP

sales@hobartsproperty.co.uk  
www.hobarts.co.uk

rightmove

PrimeLocation.com

homes24.co.uk

Zoopla.co.uk

propertyfinder.com



These property details, including measurements, floor plans and items depicted in photographs etc. are intended only as a brief guide to prospective purchasers and are not intended to be relied upon for any purpose whatsoever. Any interested party should satisfy themselves by inspection or otherwise as to the correctness of each statement contained in these details.