



Preston Hill

Harrow, HA3 9SN

£695,000

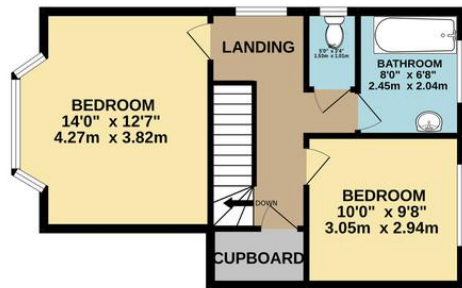
Situated on a good size corner plot with potential to extend to side and rear is this CHAIN FREE, two bedroom detached house with detached garage, car port, two reception rooms plus study, ground floor wc and a first floor bathroom with a separate wc. Located close to Claremont High School and Mount Stewart Primary School, also Kingsbury and Preston Road Stations are 0.6 miles away. EPC Rating: D



GROUND FLOOR
1125 sq.ft. (104.5 sq.m.) approx.



1ST FLOOR
447 sq.ft. (41.5 sq.m.) approx.



TOTAL FLOOR AREA: 1572 sq.ft. (146.0 sq.m.) approx.

Whilst every attempt has been made to ensure the accuracy of the floorplan contained here, measurements of doors, windows, rooms and any other items are approximate and no responsibility is taken for any error, omission or mis-statement. This plan is for illustrative purposes only and should be used as such by any prospective purchaser. The services, systems and appliances shown have not been tested and no guarantee as to their operability or efficiency can be given.
Made with Metropix ©2022



EPC Rating: D

Belmont Circle Office
506 Kenton Lane
Harrow
Middlesex
HA3 8RD

www.blacklersstateagents.co.uk
0208 907 7701
sales@blacklersstates.co.uk

Agents Note: Whilst every care has been taken to prepare these particulars, they are for guidance purposes only. All measurements are approximate and for general guidance purposes only and whilst every care has been taken to ensure their accuracy, they should not be relied upon and potential buyers/tenants are advised to recheck the measurements