

SAMPLE MILLS



Meadow View
Wear Farm
Newton Road
Bishopsteignton
Teignmouth
Devon

£185,000





Meadow View, Wear Farm, Newton Road,
Bishopsteignton, Teignmouth, Devon

£185,000

A 1 bedroom refurbished static home situated in the popular area of Wear Farm, Bishopsteignton, with some outstanding Estuary views that can be appreciated from the front of the property, and side, over towards Shaldon, the Estuary and over the rolling countryside.

The property has been completely renovated and upgraded by the present occupier and has some very useful facilities to include good off road parking area to the side, storage shed and a very useful lean to workshop that has power, water, electric and plumbing for washing machine. Also there is a launch area for boats on site, if required.

The accommodation internally comprises lounge with double glazed patio doors onto the veranda with log burner, kitchen with access onto the main bedroom and en-suite.

For those seeking a 1 bedroom static home situated in this popular location, viewing is highly recommended.



uPVC double glazed door that opens up onto the kitchen area then through to:

Lounge – 4.50m x 2.70m (14'9" x 8'10")

uPVC double glazed patio doors opening upon onto the veranda balcony, which has an outlook over the countryside towards Teignmouth and over the Estuary. uPVC double glazed windows to either side, one with distant views and one overlooking the side courtyard garden. BT point. Feature fireplace with Hobbit solid fuel log burner and marble surround. Storage cupboard which has the water heater pump system and electric heating system. Door through to:

Kitchen – 2.70m x 1.60m (8'10" x 5'3")

A good range of fitted base units with worktop surface areas. Plumbing for washing machine. Stainless steel drainer with mixer tap over. uPVC double glazed window to the side. Single oven, extractor fan over with splashback. Tiled walls. Space for fridge/freezer. uPVC double glazed door to the rear. Smoke detector. Cupboards. Consumer box. Smart meter. Coat hooks. Door through to:

Master Bedroom – 2.90m x 2.80m (9'6" x 9'2")

uPVC double glazed window to the side. Built-in double wardrobes with drawers and units. Double panelled radiator. Sliding door through to:

En-Suite

Shower cubicle. Perspective wall covering. Mira shower. Low level WC. Wash-hand basin. Obscure glazed window to the side and to the rear. Chrome radiator. Circular light. Medicine cabinet.

OUTSIDE

A wooden gate and fencing leading to the concrete path with steps up onto the veranda and to the front with Estuary views down towards Shaldon and over the countryside. A paved courtyard area with bin area and log storage area with opening doors. A wooden workshop which is fitted with shelving, light and power. Plumbing for w/c. uPVC double glazed window to the side. Fuse board which is connected to the mains fuse. uPVC double glazed door. Outside water tap. Further metal storage cupboard with shelving.

To the side there is a wooden gate opening onto a gravelled parking area, which ideal for a car or boat.

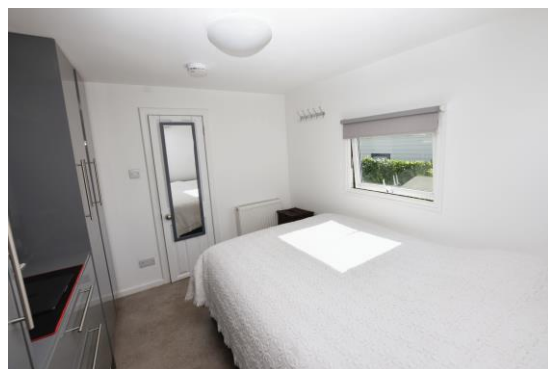
AGENTS NOTE

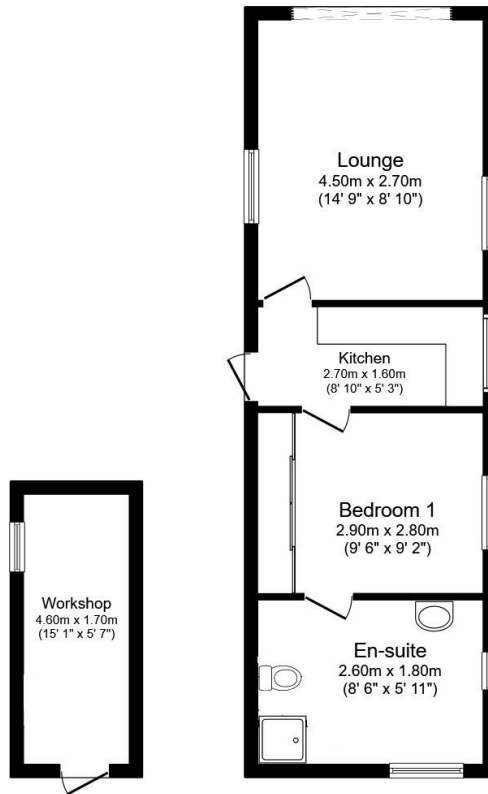
Council Tax Band: 'A' £1492.15 for 2023/24

Ground Rent: £163.00 per month

Age restriction: Over 18's

Ideal for leisure boat owners as you can launch your boats on site





Total floor area 50.6 sq.m. (544 sq.ft.) approx

This plan is for illustration purposes only and may not be representative of the property. Plan not to scale. Powered by PropertyBox

**SAMPLE
MILLS**

3 Bank Street
Newton Abbot
TQ12 2JL

Tel: 01626 367018
sales@samplemills.co.uk

www.samplemills.co.uk

[rightmove](#) [Zoopla.co.uk](#) [PrimeLocation.com](#)

IMPORTANT: we would like to inform prospective purchasers that these sales particulars have been prepared as a general guide only. A detailed survey has not been carried out, nor the services, appliances and fittings tested. Room sizes should not be relied upon for furnishing purposes and are approximate. If floor plans are included, they are for guidance only and illustration purposes only and may not be to scale. If there are any important matters likely to affect your decision to buy, please contact us before viewing the property.

S712 Ravensworth 0191 917 9331