



THE BIG HOUSE

Lower Quay Road | Hook | Wales | SA62 4LR

FINE & COUNTRY

THE BIG HOUSE

THE BIG HOUSE

If 'messaging about in boats' and 'peace and tranquility' are high on your wish list, then look no further. The Big House sits on the Cleddau River where the water is accessible at both low and high tide, walking straight from your garden onto the foreshore.

This detached circa 1800's family home with two reception rooms, farmhouse dining kitchen, four bedrooms and master with en-suite, is utterly charming. Along with 'The Little House', a beautifully converted studio annex with potential to enlarge further into the neighbouring workshop (STP) if required, ideal for multi-generational living or holiday let, overflow accommodation.

(The sellers also have a picture book 64 page PDF documenting their life at the Big House please request this separately if interested.)

Bursting with characterful charm and occupying a truly magical location on one of the most beautiful and tranquil stretches of water in Pembrokeshire. The Big House is a short drive away from the village of Hook with a thriving community and local amenities and the county town of Haverfordwest.

Offering water views from three of the primary bedrooms to the rear of the property, the dining room, and the sitting room with door inviting you outside to the large patio running alongside the shoreline, The Big House is surrounded by natural beauty.

Approached by a private country track with shared access, a driveway to the side with ample parking space, kitchen garden overlooking the river, with steps leading down to a stone seating area, level lawns, two large log stores and garden shed, complete the offering.

The Big House, where you and the water are one.











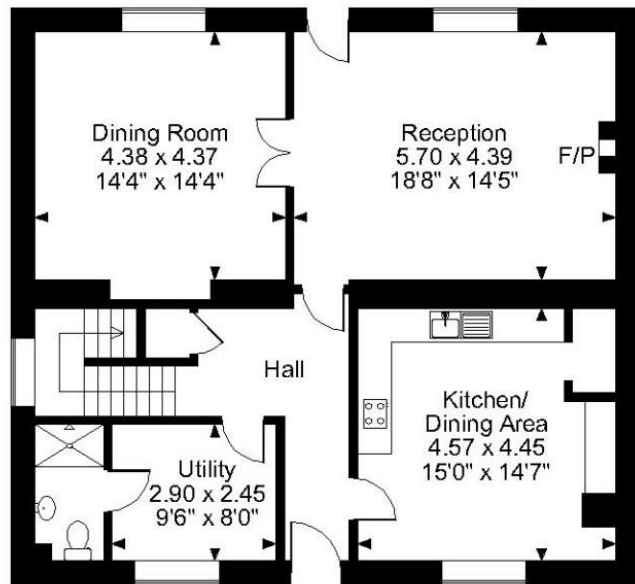
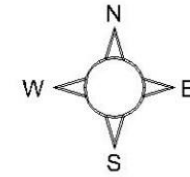
The Big House, Lower Quay Road, Hook, Haverfordwest

Approximate Gross Internal Area

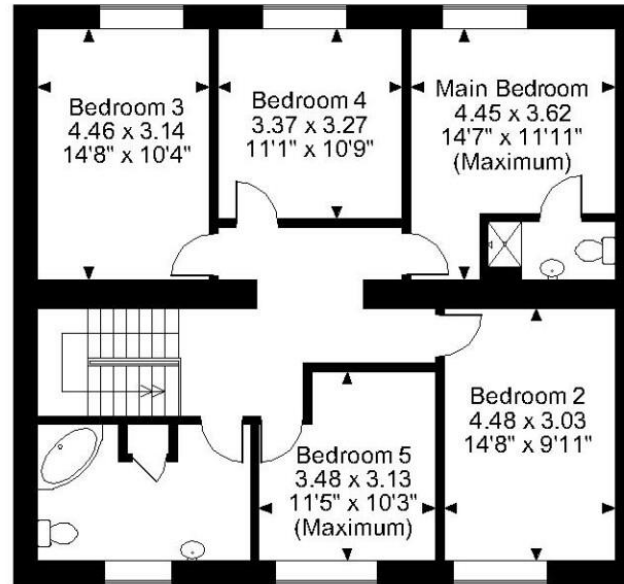
Main House = 2032 Sq Ft/189 Sq M

Workshop = 173 Sq Ft/16 Sq M

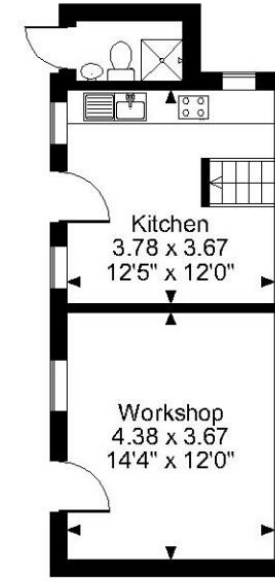
Little House = 174 Sq Ft/16 Sq M



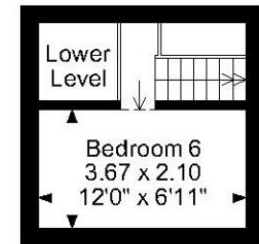
Ground Floor



First Floor



**Little House
Ground Floor**



**Little House
First Floor**

FOR ILLUSTRATIVE PURPOSES ONLY - NOT TO SCALE

The position & size of doors, windows, appliances and other features are approximate only.

□ □ □ Denotes restricted head height

© ehous. Unauthorised reproduction prohibited. Drawing ref. dig/8538547/SS



Fine & Country West Wales

The Gallery, Station Approach, Station Building, Aberystwyth, SY23 1LH

Tel: 01974 299 055 | nigel.salmon@fineandcountry.com

FINE & **COUNTRY**
fineandcountry.com™