



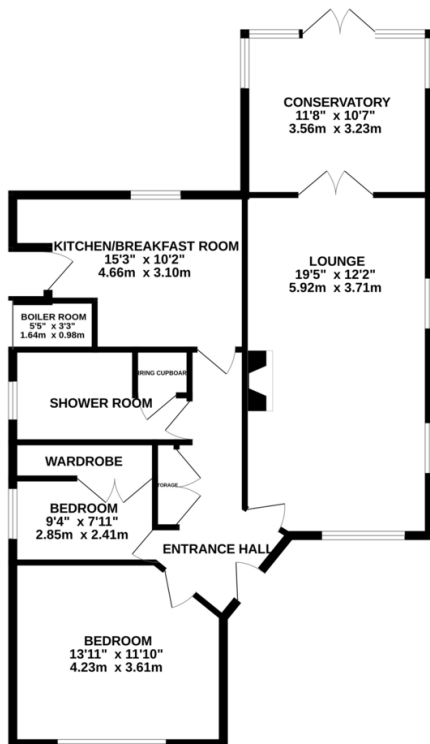
FOR SALE

2 Bed Detached Bungalow in Southdown Drive, Thurmaston, LE4 8HS
£300,000

*** No Chain *** Spacious detached bungalow for sale in a very popular part of Thurmaston and occupying a generous plot. The accommodation comprises entrance hall, lounge, conservatory, breakfast kitchen, two bedrooms, shower room, good size rear garden, detached garage, off road parking and front garden.

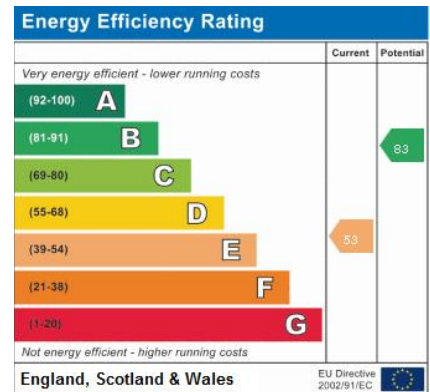


GROUND FLOOR
931 sq.ft. (86.5 sq.m.) approx.



TOTAL FLOOR AREA: 931 sq.ft. (86.5 sq.m.) approx.
Whilst every attempt has been made to ensure the accuracy of the floorplan contained here, measurements of doors, windows, rooms and any other items are approximate and no responsibility is taken for any error, omission or mis-statement. This plan is for illustrative purposes only and should be used as such by any prospective purchaser. The services, systems and appliances shown have not been tested and no guarantee as to their operability or efficiency can be given.
Made with Hectoplane ©2024.

Agents Note: Whilst every care has been taken to prepare these sales particulars, they are for guidance purposes only. All measurements are approximate are for general guidance purposes only and whilst every care has been taken to ensure their accuracy, they should not be relied upon and potential buyers are advised to recheck the measurements.



- No Chain
- Detached
- Bungalow
- Shower Room
- Detached Garage
- Popular Location
- Good Size Rear Garden
- Conservatory

