



MILE



Leighton Gardens, London NW10

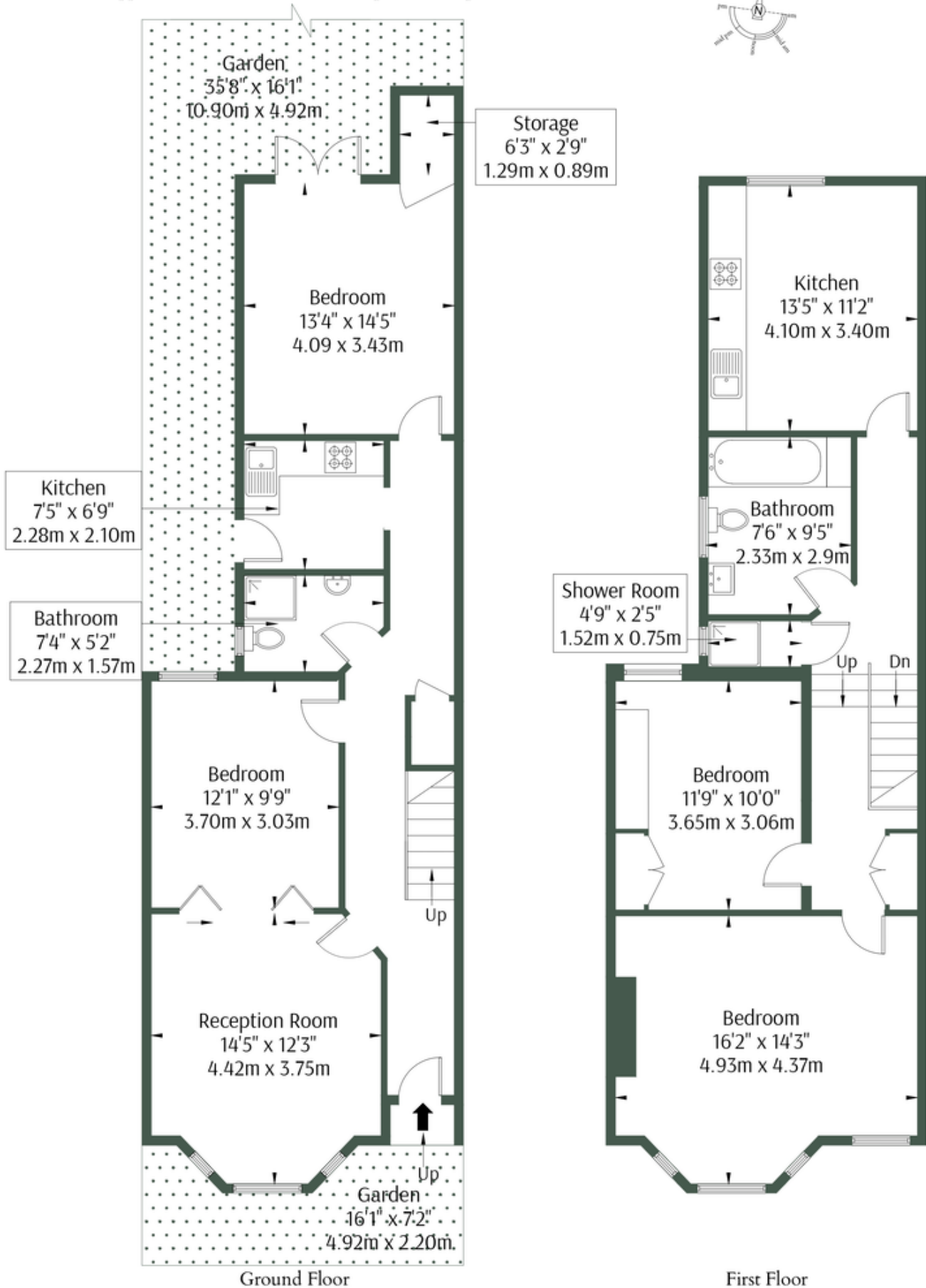
£1,275,000 Freehold

Welcome to Leighton Gardens, where classic charm meets modern potential in this delightful period home. Nestled on a well-regarded road in Kensal Rise, this terraced property boasts three bedrooms and endless possibilities for expansion. With potential to extend into the side return, rear, and even into the attic (subject to planning permission), there's ample opportunity to increase both space and square footage to suit your needs and vision. Sold chain-free, this residence presents an attractive proposition for those seeking a hassle-free move. Enjoy the convenience of a great location, with amenities and transport links within easy reach, while relishing the tranquillity of a quiet street setting. Leighton Gardens, where the promise of period elegance and future possibilities awaits.

- Period terraced home
- Three bedrooms
- 1432 sq ft
- Potential to extend (STPP)
- Quiet residential road
- Fantastic location
- Good condition
- Chain free
- Private garden
- Close to shops and transports

Leighton Gardens, NW10 3PU

Approx Gross Internal Area = 133 sq.m / 1432 sq.ft



MONEY LAUNDERING REGULATIONS 2003: Intending purchasers will be asked to produce identification documentation at a later stage and we would ask for your co-operation in order that there will be no delay in agreeing the sale.

General: While we endeavour to make our sales particulars fair, accurate and reliable, they are only a general guide to the property and, accordingly, if there is any point which is of particular importance to you, please contact the office and we will be pleased to check the position for you, especially if you are contemplating travelling some distance to view the property.

Measurements: These approximate room sizes are only intended as general guidance. You must verify the dimensions carefully before ordering carpets or any built-in furniture.

Services: Please note we have not tested the services or any of the equipment or appliances in this property, accordingly we strongly advise prospective buyers to commission their own survey or service reports before finalising their offer to purchase.