



Plimsoll Road, N4 2EN

Asking Price Of £375,000
Share of Freehold



Plimsoll Road

Asking Price Of £375,000

Share of Freehold

A well-presented one bedroom apartment set within an attractive period conversion. The accommodation is arranged on the first floor and comprises of a bright reception room, with modern kitchen, generous double bedroom and a full shower room suite. Plimsoll Road is a desirable, quiet street in close proximity to local shops and artisan cafes. Highbury and Stoke Newington are short walk, as are local parks (Clissold Park, Finsbury Park, and Woodberry Wetlands). Arsenal and Finsbury Park station provide excellent transport links, along with easy connections to nearby local bus routes. Chain Free Sale.

- One Double Bedroom
- First Floor
- Chain Free Sale
- Epc Rating
- Very Well Presented
- Great Location
- Close to good Transport Links
- Mins Walk to Highbury





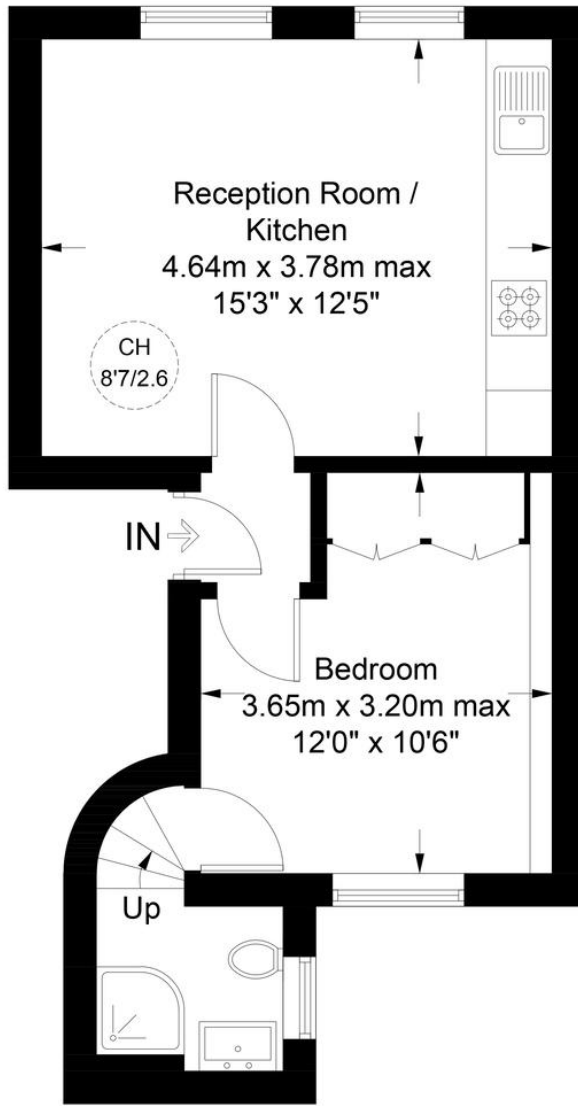


Plimsoll Road, N4

Approximate Gross Internal Area = 362 sq ft / 33.6 sq m

DAVID ANDREW

your most valuable asset



First Floor

This plan is for layout guidance only. Not drawn to scale unless stated. Windows and door openings are approximate. Whilst every care is taken in the preparation of this plan, please check all dimensions, shapes and compass bearings before making any decisions reliant upon them. (ID1038660)

DAVID ANDREW your most valuable asset

Score	Energy rating	Current	Potential
92+	A		
81-91	B		
69-80	C	80 C	80 C
55-68	D		
39-54	E		
21-38	F		
1-20	G		

Archway Office

671 Holloway Road
London, N19 5SE

T (0)20 7619 3750

Highbury Office

90 Highbury Park
London N5 2XE

T (0)20 7354 9111

Stroud Green Office

167 Stroud Green Road
London N4 3PZ

T (0)20 7281 2000

General Contact

E info@davidandrew.co.uk

W www.davidandrew.co.uk



Agent's Note:

Whilst Care has been exercised in the preparation of these sales particulars, statements about the property must not be relied upon as representations of statements or fact. Prospective purchasers must make and rely upon their own enquiries and those of professional representatives. The company accept not liability for any error contained in these particulars.



Certified Property Measurer