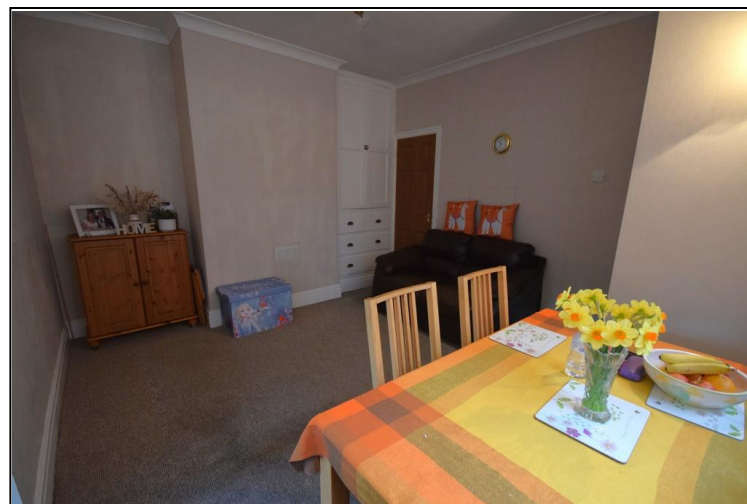


# PORTFIELD

GARRARD & WRIGHT

INDEPENDENT ESTATE AGENTS • SURVEYORS & VALUERS RESIDENTIAL LETTING AGENTS • NEW HOME SALES



## 23 Boundary Avenue

A traditional bay fronted 3 bedroom semi detached home near to the many local shops and facilities along Wheatley Hall Road, not far from Sandall Park and easy access into Doncaster City Centre.

This home has spacious living accommodation with two reception rooms, gas heating, double glazing, scope for update, off road parking with driveway and easy maintained rear gardens and garage. The property comprises of side entrance hallway, bay window lounge, generous size dining room, kitchen with various units, landing 3 bedrooms, bathroom with shower over the bath. This is an ideal starter family property to which viewing is recommended.

**OFFERS IN REGION OF  
£165,000**