



MILE



MILE



Armstrong Road, London, NW10

£375,000 Leasehold

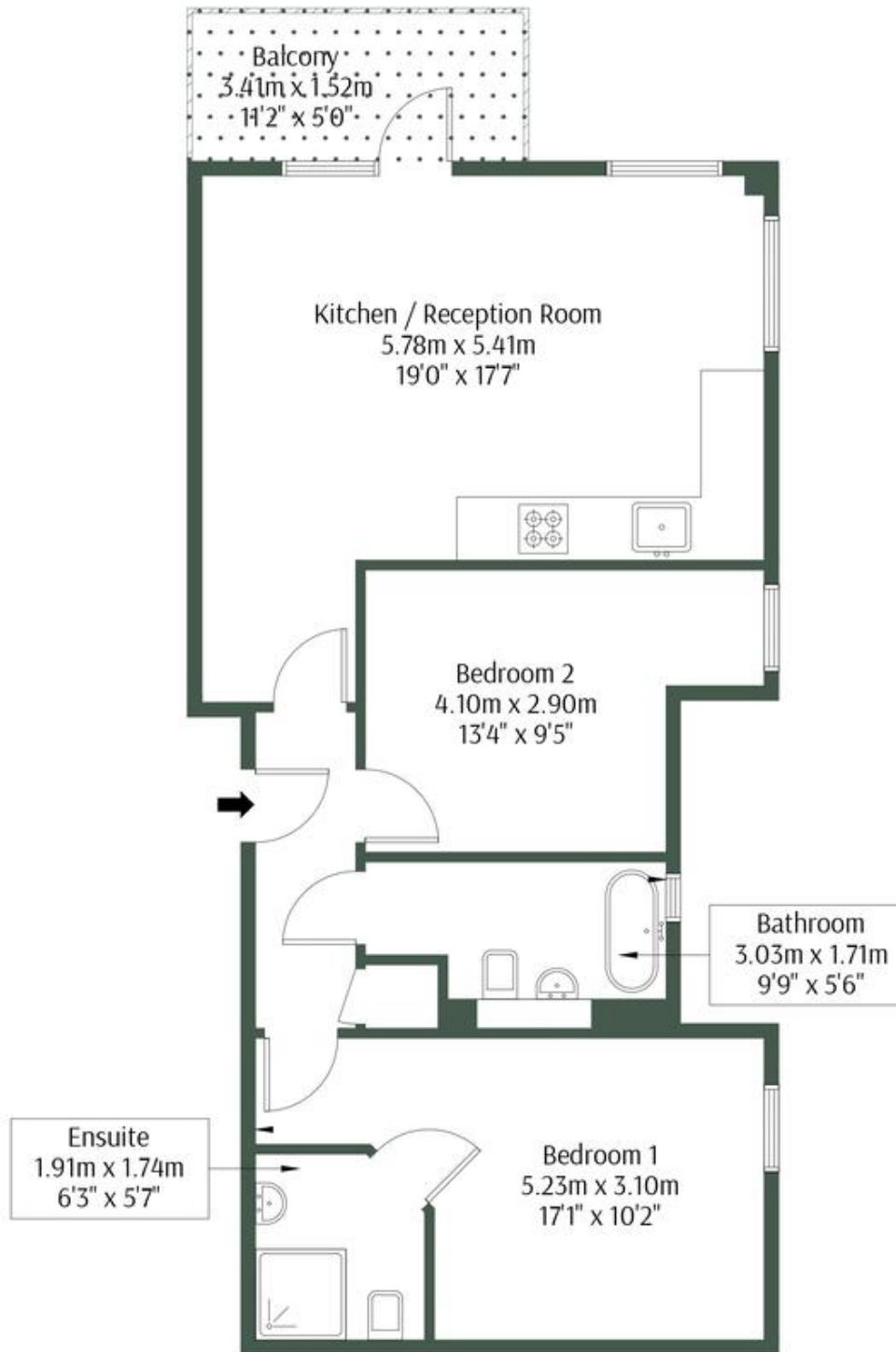
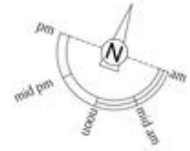
Welcome to Armstrong Road, a well presented two bedroom two bathroom flat in NW10 with secure parking. Step into urban luxury with this exquisite 2-bedroom apartment, nestled in a vibrant neighbourhood where convenience meets comfort. Spanning just shy of 700 square feet, this residence boasts a harmonious blend of modern elegance and practicality. Upon entry, you're greeted by a sense of openness and sophistication. The living space, adorned with large windows, invites abundant natural light to dance across the sleek interiors, creating an airy ambiance that uplifts the spirit.

The heart of the home, an open-plan kitchen living area, beckons you to entertain and unwind in style. Prepare culinary delights in the well-appointed kitchen, complete with contemporary appliances and ample storage, while seamlessly mingling with guests in the adjacent living space.

- Great condition
- Secure gated parking
- Open plan kitchen living
- Bright and airy
- Abundance of natural light
- Two bathrooms, (one en - suite)
- Secure residential development
- Close to shops and local amenities
- Two bedrooms
- Great modern new build feel

Armstrong Road, NW10 9EF

Approx Gross Internal Area = 61.87 sq.m / 666 sq.ft



Third Floor



The Floor plan is not to scale and measurements and areas shown are approximate and therefore should be used for

MONEY LAUNDERING REGULATIONS 2003: Intending purchasers will be asked to produce identification documentation at a later stage and we would ask for your co-operation in order that there will be no delay in agreeing the sale.

General: While we endeavour to make our sales particulars fair, accurate and reliable, they are only a general guide to the property and, accordingly, if there is any point which is of particular importance to you, please contact the office and we will be pleased to check the position for you, especially if you are contemplating travelling some distance to view the property.

Measurements: These approximate room sizes are only intended as general guidance. You must verify the dimensions carefully before ordering carpets or any built-in furniture.

Services: Please note we have not tested the services or any of the equipment or appliances in this property, accordingly we strongly advise prospective buyers to commission their own survey or service reports before finalising their offer to purchase.