



Studio 402 2 Moorfields, Liverpool , L2 2BT
£675 Per month

Bluerow Homes are delighted to offer this modern furnished studio located in the heart of the business district and adjacent to Moorfields Station. Stylish communal entrance with , stairs and lift to upper floors, studio comprising of an open plan kitchen/living/sleeping area and stylish shower. Double glazed windows and electric heating. Electric and water included in the rent payment, tenants are responsible for their own The studios are furnished with a sofa, double bed, wardrobe, chest of drawers, bedside cabinet, table and 2 chairs.

Available immediately

Minimum 6 months

Council Tax Band A.

EPC Rating C

Rent £675 including electric, water & heating, excluding council tax

Deposit £778

Holding deposit = 1 Weeks Rent

Communal Entrance

Living/Kitchen/Sleeping Area

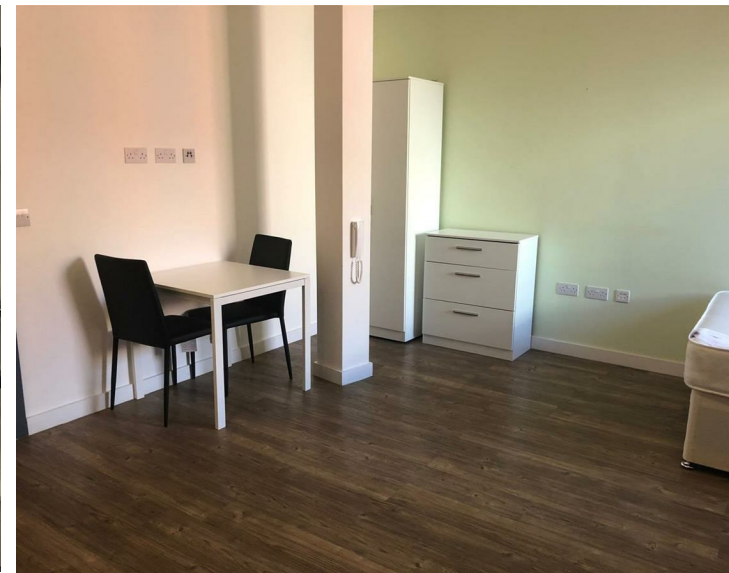
15'0" x 16'0" (4.58 x 4.90)

Wood laminate flooring, double glazed wood framed window, gas fired central heating radiator, intercom handset

Accessible kitchen area comprising high gloss wall, base and drawer units, fridge, microwave oven, two ring hob, stainless steel sink with mixer tap.

Wet room

Wet room comprising shower, wash hand basin, low level w.c., wall mirror, shaver point, tiled walls and floor.



Energy Efficiency Rating		Current	Potential
Very energy efficient - lower running costs			
(92 plus) A			
(81-91) B			
(69-80) C			
(55-68) D			
(39-54) E			
(21-38) F			
(1-20) G			
Not energy efficient - higher running costs			
England & Wales	EU Directive 2002/91/EC	79	79

Environmental Impact (CO ₂) Rating		Current	Potential
Very environmentally friendly - lower CO ₂ emissions			
(92 plus) A			
(81-91) B			
(69-80) C			
(55-68) D			
(39-54) E			
(21-38) F			
(1-20) G			
Not environmentally friendly - higher CO ₂ emissions			
England & Wales	EU Directive 2002/91/EC	87	87

116 Duke Street, Liverpool, Merseyside, L1 5JW

Tel: 0151 709 9638

sales@bluerowhomes.co.uk

www.bluerowlettings.com