



MILE



MILE



MILE



MILE



MILE

Westbourne Terrace, London

£1,695,000 Leasehold

Beautifully designed and arranged on the raised ground floor of this Grade II period building, this spacious flat offers almost 1,200 sq ft of living space inclusive of three decent sized bedrooms (main with an en-suite), a spacious reception room with high ceilings, period features and an abundance of natural light throughout and a newly renovated separate kitchen.

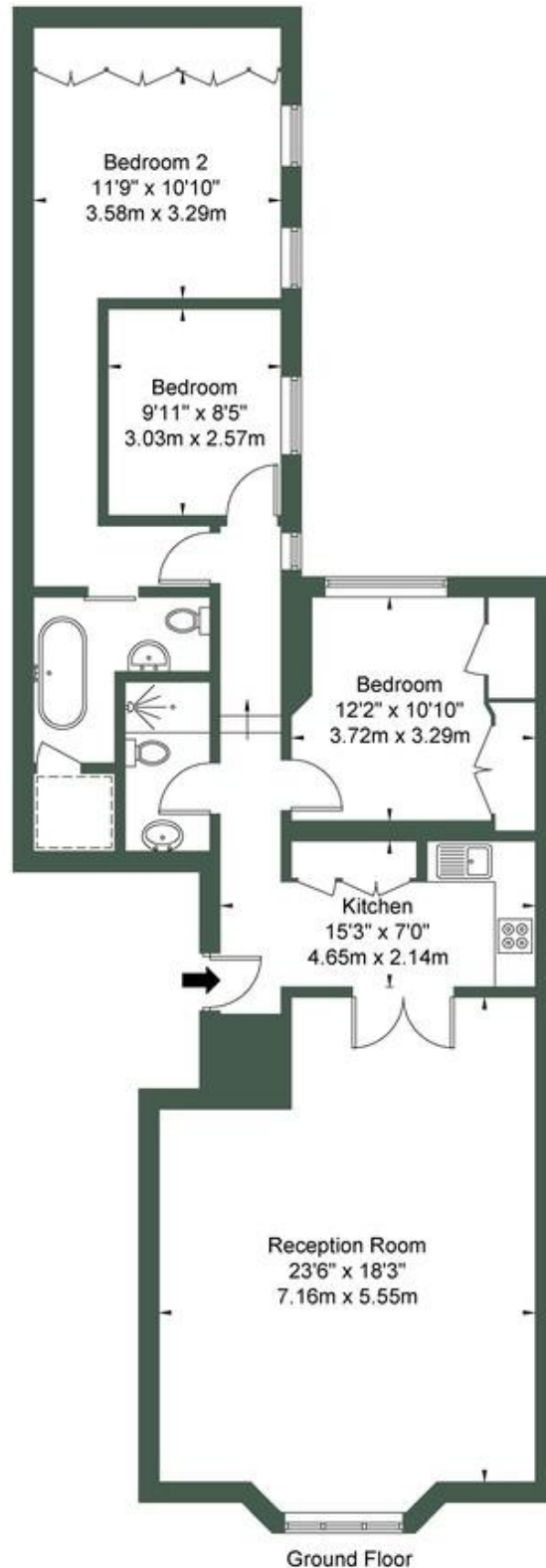
Westbourne Terrace is situated between Lancaster Gate (underground) and Paddington Station, residents benefit from being within walking distance to Hyde Park and the amenities and restaurants that the local area has to offer!

EPC Rating: C

- Spacious reception room with period features and high ceilings
- Abundance of natural light
- Meticulously designed
- Almost 1,200 sq ft
- Close proximity to Hyde Park
- Close to Paddington and Lancaster gate station
- Newly renovated
- Large bedrooms with sufficient storage space
- Beautifully orchestrated main bedroom with a modern en-suite
- Attention to detail throughout

Westbourne Terrace W2 3UP

Approx. Gross Internal Area = 107.6 sq m / 1158 sq ft



Ref

Copyright



The Floor plan is not to scale and measurements and areas shown are approximate and therefore should be used for illustrative purposes only. The plan has been prepared in accordance with the RICS code of Measuring Practice and whilst we have confidence in the information produced it must not be relied on. If there is any aspect of particular importance, you should

MONEY LAUNDERING REGULATIONS 2003: Intending purchasers will be asked to produce identification documentation at a later stage and we would ask for your co-operation in order that there will be no delay in agreeing the sale.

General: While we endeavour to make our sales particulars fair, accurate and reliable, they are only a general guide to the property and, accordingly, if there is any point which is of particular importance to you, please contact the office and we will be pleased to check the position for you, especially if you are contemplating travelling some distance to view the property.

Measurements: These approximate room sizes are only intended as general guidance. You must verify the dimensions carefully before ordering carpets or any built-in furniture.

Services: Please note we have not tested the services or any of the equipment or appliances in this property, accordingly we strongly advise prospective buyers to commission their own survey or service reports before finalising their offer to purchase.