



HINTON & DOWNES
residential

SALES, LETTINGS & MANAGEMENT

Weighton Road

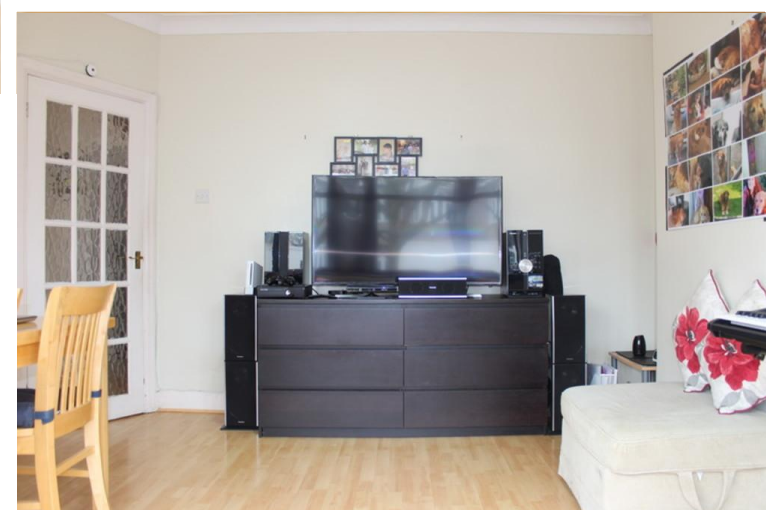
Harrow Weald HA3 6HY

- Four bedroom semi detached house with own driveway
- Superb condition throughout
- Gas central heating, double glazed windows and off street parking
- Large, modern fitted kitchen with

£630,000

EPC Rating 'TBC'





Property Description

A SUPERBLY PRESENTED EXTENDED FOUR BEDROOM BAY FRONTED SEMI DETACHED HOUSE WITH OWN DRIVEWAY located within easy reach of facilities in Harrow Weald. The property has been lovingly updated over the years by the present owners and benefits from gas fired central heating, double glazed windows, modern kitchen and bathroom fittings, a ground floor guests bedroom and shower room and off street parking to the front.. 80ft rear garden. Viewing comes highly advised.







%epcGraph_c_1_378%

399 High Road
Harrow
Middlesex
HA3 6EL

www.hintonanddownes.co.uk
sales@hintonanddownes.com
0208 861 1066

Agents Note: Whilst every care has been taken to prepare these sales particulars, they are for guidance purposes only. All measurements are approximate and for general guidance purposes only and whilst every care has been taken to ensure their accuracy, they should not be relied upon and potential buyers are advised to recheck the measurements