



**Juniper Drive**  
London, SW18 1TW

## PROPERTY SUMMARY

A stunning two bedroom apartment with river views, located on the fourth floor of this award winning riverside development covering in excess of 890 sq ft. The principle bedroom benefitting from built in mirrored wardrobes and a well appointed en suite shower room. The apartment is flooded with natural light from the floor to ceiling windows and features underfloor heating throughout. The sale includes one parking space (right to park).

2



2

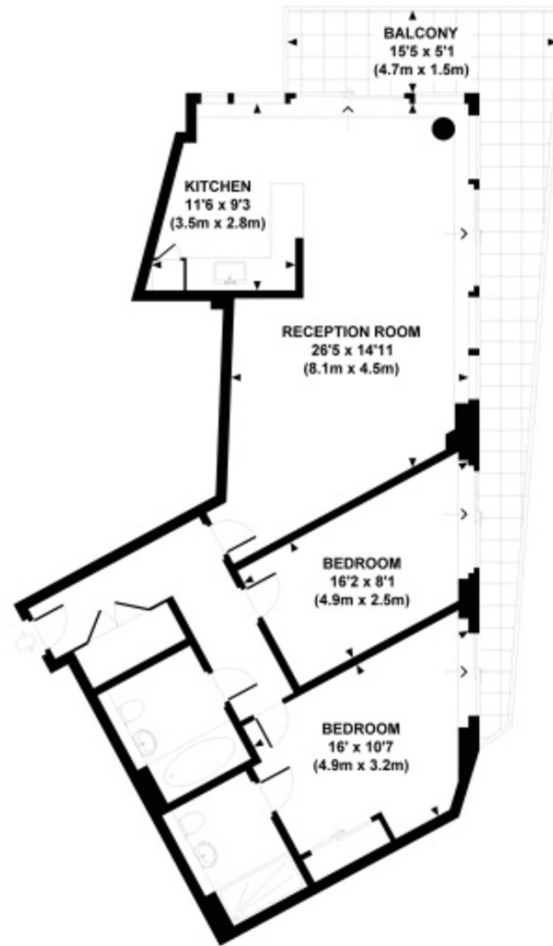


0





Approx. gross internal area  
896 Sq.Ft. / 83 Sq.M.



**LOCAL AUTHORITY**

Wandsworth Borough Council

**TENURE**

Freehold

**COUNCIL TAX BAND**

Band F

**VIEWINGS**

By prior appointment only

Agents Note: Whilst every care has been taken to prepare these particulars, they are for guidance purposes only. All measurements are approximate and are for general guidance purposes only and whilst every care has been taken to ensure their accuracy, they should not be relied upon and potential buyers/tenants are advised to recheck the measurements



4 Vicentia Court  
Bridges Wharf  
London  
SW11 3GY

02073522455  
info@hgproperty.co.uk  
www.hgproperty.co.uk