



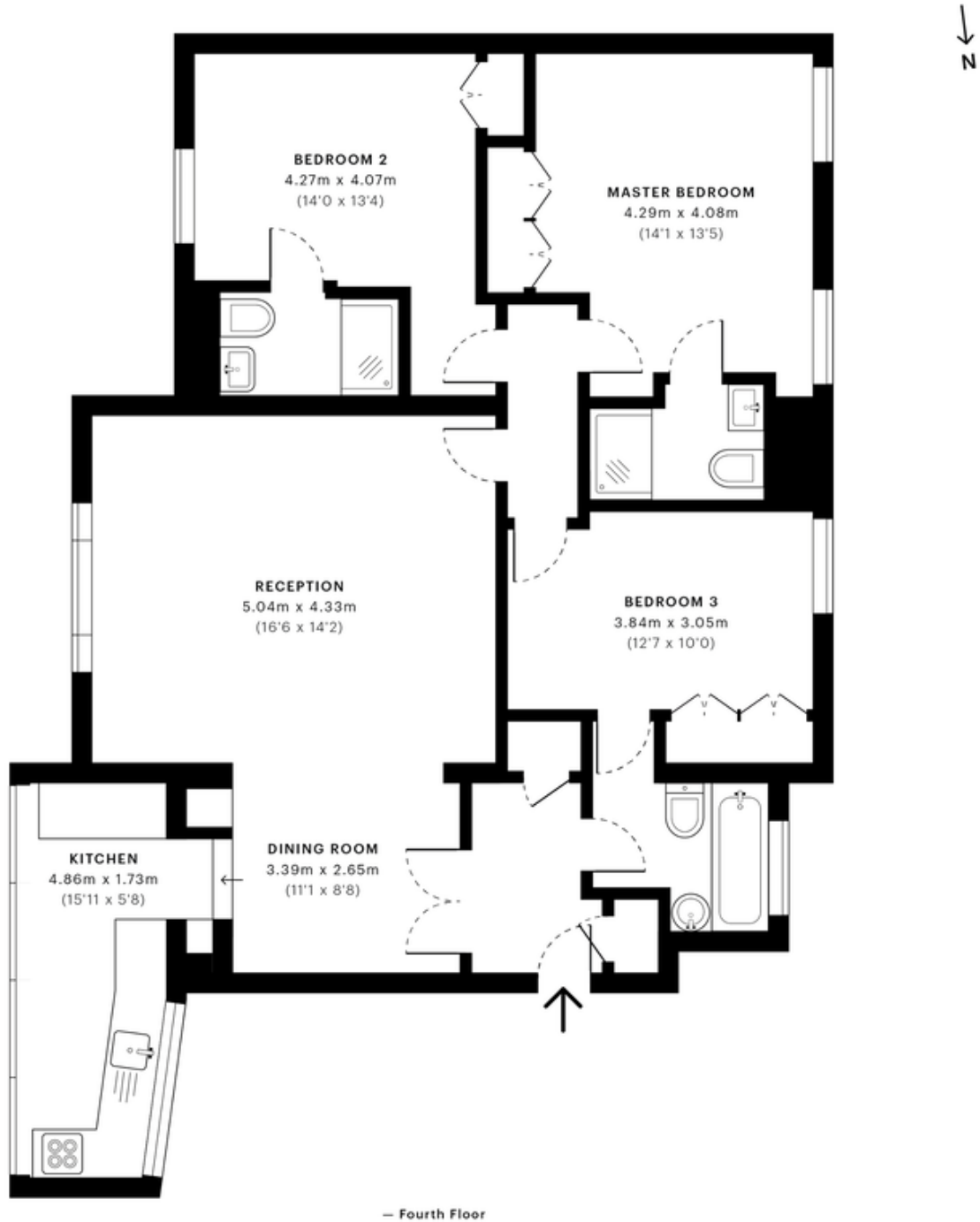
MILE



Boydell Court, St. Johns Wood NW8
£5,633 pcm

Mile are delighted to market this stunning fourth-floor apartment in the heart of St Johns Wood.

- Heating and Hot Water Included
- Private Gated Development
- Prime Location
- Air Conditioning
- Available 10th March
- Pet Friendly
- Private Parking
- Fourth Floor
- Viewing Recommended
- Close to Regents Park



GROSS INTERNAL AREA (GIA)
The footprint of the property.
100.8 Sqm / 1085.4 Sqft



NET INTERNAL AREA (NIA)
Excludes walls and external features. Includes washrooms, restricted head
91.8 Sqm / 988.4 Sqft



EXTERNAL STRUCTURAL FEATURES
Balconies, terraces, verandas etc.
0.0 Sqm / 0.0 Sqft



RESTRICTED HEAD HEIGHT
Limited use area under 1.5m
0.0 Sqm / 0.0 Sqft