



LITTLE ORCHARD CLOSE, PINNER HA5 3DR



A Perfect Ground Floor Maisonette for First-Time Buyers or Those Looking to Downsize . Chain Free.

This charming two-bedroom ground floor maisonette is ideally located in the heart of Pinner, offering the perfect blend of comfort, convenience, and a peaceful village atmosphere. Whether you're a first-time buyer or looking to downsize, this well-maintained home is ready for you to move in and enjoy.

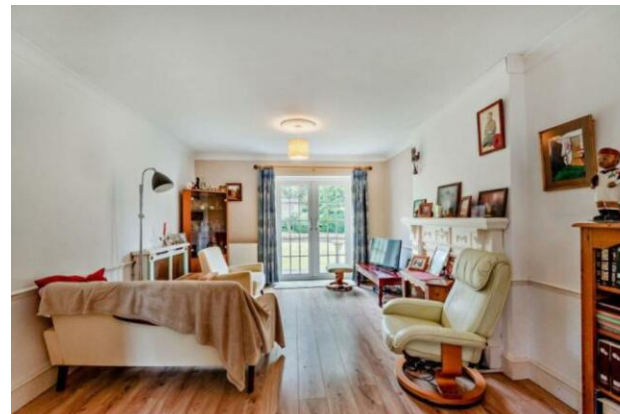
Step inside to find a spacious entrance hallway with three handy storage cupboards, perfect for keeping your home organized. The bright and airy double-aspect lounge/dining room is a real highlight, offering a lovely space to relax and entertain with direct access to the well-kept communal gardens. The kitchen is functional and well-equipped, making meal prep a breeze. Both bedrooms are well-sized, with ample space for furniture and personal touches.

Externally, you'll benefit from access to beautifully maintained communal gardens and the added convenience of a private garage in a nearby block - a rare find in this area!

Located in a quiet cul-de-sac off Barrow Point Lane, this property is just moments from the vibrant Pinner Village, where you'll find a wide range of shops, cafes, restaurants, and supermarkets. Pinner Station is just a short walk away, offering quick access to the Metropolitan Line for regular services into London, while Hatch End Station (also nearby) provides Overground connections. The area is well served by local schools and leisure facilities, making it a perfect spot for both young families and those looking for a peaceful yet well-connected location.

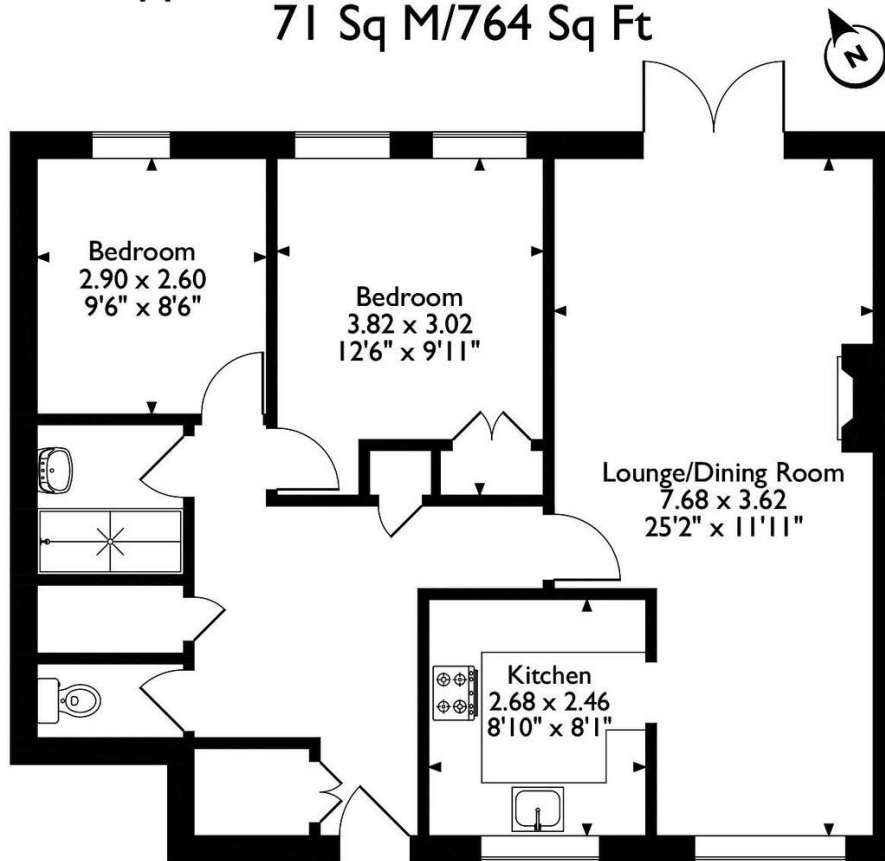
for you to make it your own!

161 Year Lease



Little Orchard Close, Pinner

Approximate Gross Internal Area
71 Sq M/764 Sq Ft



Please note that the location of doors, windows and other items are approximate and this floorplan is to be used for illustrative purposes only. Unauthorized reproduction is prohibited.



