



Somerfield Road, N4 2JJ

Asking Price Of £1,100,000  
Share of Freehold





# Somerfield Road

Asking Price Of £1,100,000

Share of Freehold

Introducing a stunning three-bedroom, three-bathroom garden maisonette on Somerfield Road. This turnkey home, offered chain-free with a share of the freehold, boasts a private entrance and elegant updates throughout. Spanning 1,183 sqft (109.9 sqm) of internal living space, the modern and spacious interiors are flooded with natural light. The luxurious master suite features a fantastic freestanding bathtub, perfect for relaxation. The open-plan kitchen and living area flows seamlessly into a private garden, ideal for entertaining.

Ideally located near Finsbury Park Station, enjoy swift access to the Victoria & Piccadilly lines, National Rail, and excellent bus links. The vibrant local area offers trendy cafes, restaurants, independent shops, and green spaces, with both Finsbury Park and Clissold Park nearby. A perfect blend of style, space, and convenience, making it a wonderful home!

- Three Double Bed Maisonette
- Three Bathrooms
- Private Entrance
- 1183 sq ft / 109 sq m
- Recently Renovated
- Share Of Freehold
- Landscaped Garden
- Excellent Transport Links





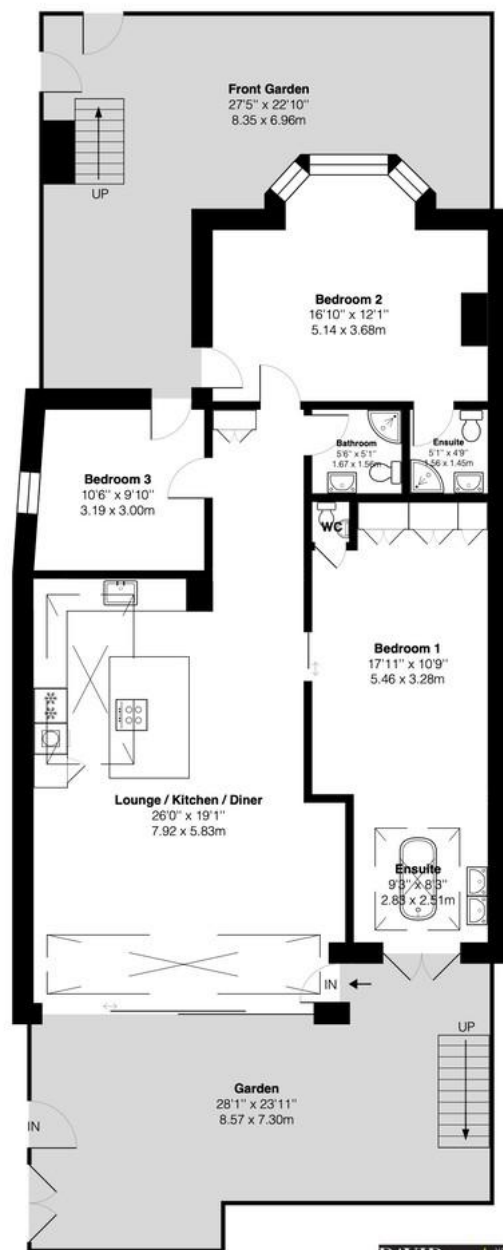




Somerfield Road, N4

Approximate Gross Internal Area = 1183 sq ft / 109.9 sq m

**DAVID  
ANDREW** | your  
most  
valuable  
asset



Ground Floor

**DAVID  
ANDREW** | your  
most  
valuable  
asset

Score	Energy rating	Current	Potential
92+	A		
81-91	B		
69-80	C	75 C	79 C
55-68	D		
39-54	E		
21-38	F		
1-20	G		

**Agent's Note:**

Whilst Care has been exercised in the preparation of these sales particulars, statements about the property must not be relied upon as representations of statements or fact. Prospective purchasers must make and rely upon their own enquiries and those of professional representatives. The company accept not liability for any error contained in these particulars.

**Archway Office**

671 Holloway Road  
London, N19 5SE

T (0)20 7619 3750

**Highbury Office**

90 Highbury Park  
London N5 2XE

T (0)20 7354 9111

**Stroud Green Office**

167 Stroud Green Road  
London N4 3PZ

T (0)20 7281 2000

**General Contact**

E [info@davidandrew.co.uk](mailto:info@davidandrew.co.uk)

