



Seymours




Grosvenor Court Blackwater, GU17 9JL

£800,000 Guide Price

Arrange a viewing: 01276 534100

Property Details

-  4 bedrooms
-  2 baths
-  EPC Rating C
-  1894 sqft (Inc Garage)
-  Blackwater (1.3 miles)

- Imposing Family Home
- Three Reception Rooms
- Kitchen/Breakfast Room
- Utility Room
- Guest Cloakroom
- Four Bedrooms
- Master Bedroom With En-Suite Bathroom
- Delightful Gardens
- Double garage and driveway

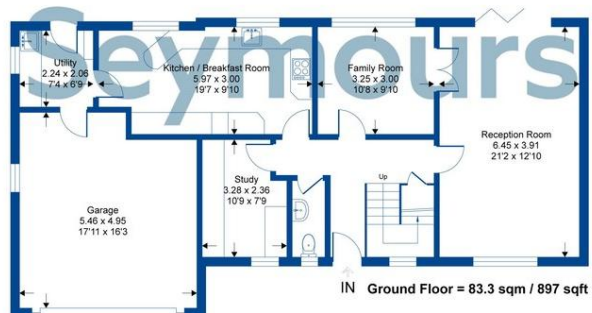
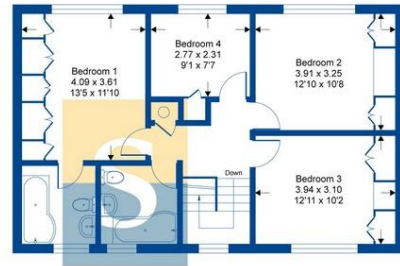
An imposing family home set within mature gardens backing directly onto woodland. This four bedroom property has three reception rooms and a modern kitchen/breakfast room in addition there is a useful utility room and guest cloakroom. To the first floor the four bedrooms are served by two refitted bathrooms with the master bedroom having an en-suite. The house is approached via a generous paved driveway which in turn leads to a double garage. The rear gardens are delightful and back directly onto woodland, being principally laid to lawn with mature herbaceous borders and attractive terraces

[01276 534100](tel:01276534100) / james@seymours-blackwater.co.uk



Grosvenor Court

Approximate Gross Internal Area = 150.5 sq m / 1619 sq ft
 Approximate Garage Internal Area = 25.5 sq m / 275 sq ft
 Approximate Total Internal Area = 176 sq m / 1894 sq ft



Whilst every attempt has been made to ensure the accuracy of the floor plan contained here, measurements of doors, windows, rooms and any other items are approximate and no responsibility is taken for any error, omission or mis-statement. This plan is for illustrative purposes only and should be used as such by any prospective purchaser.