



20 Maple Gardens

Hove BN3 7JU

Asking Price Of £625,000

- FOUR BEDROOMS
- BEDROOM 5/STUDY
- SHOWER ROOM
- FAMILY BATHROOM

- LIVING ROOM
- KITCHEN/DINING ROOM
- SOUTH FACING GARDEN
- UPVC DOUBLE GLAZED WINDOWS

Whitlock and Heaps are pleased to offer to market this semi detached family home having been extended to now offer four bedroom accommodation with a 5th bedroom/study. To the first and top floors there is also a family bathroom and separate shower room and to the ground floor a separate living room and kitchen/dining room that leads onto the south facing rear garden. Situated in this convenient location with local amenities being within easy reach along with the A27 and seafront. The property is presented in good decorative order throughout and has UPVC double glazed windows and gas central heating.

ENTRANCE HALL Understairs cupboard, radiator.

KITCHEN/DINING ROOM Incorporating stainless steel 1 1/2 bowl sink unit with drainer and mixer tap, adjacent laminate work surface with cupboards and drawers under, matching eye level wall cupboards, gas cooker with stainless steel extractor over, appliance space, tiled splashback, UPVC double glazed window, radiator, french doors to garden.

LIVING ROOM UPVC double glazed bay window, radiator.

FIRST FLOOR

LANDING UPVC double glazed window.

BEDROOM 1 Fitted wardrobes, UPVC double glazed window, radiator.

BEDROOM 2 Fitted wardrobes, UPVC double glazed window, radiator.

BEDROOM 5/STUDY UPVC double glazed window, radiator.

BATHROOM White suite comprising panelled bath with separate shower over and glazed shower screen, pedestal wash hand basin, low level w.c, part tiled walls, UPVC double glazed window, heated ladder style towel rail.

TOP FLOOR

LANDING UPVC double glazed window.

BEDROOM 3 Fitted wardrobes, UPVC double glazed window, radiator.

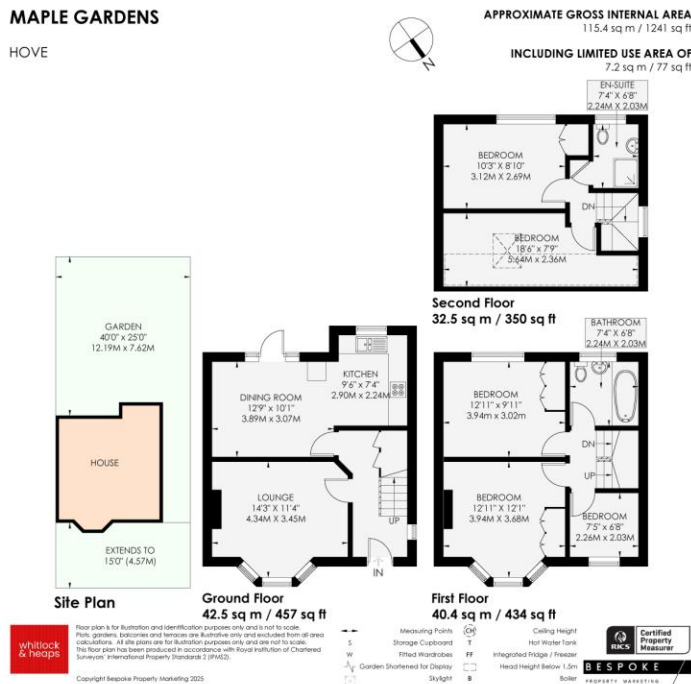
BEDROOM 4 Velux window, radiator.

SHOWER ROOM Comprising walk in shower with tiled surround, wash hand basin with cupboard under, low level w.c, heated ladder style towel rail, UPVC double glazed window.

OUTSIDE

FRONT GARDEN Ideal to convert for off street parking.

SOUTH FACING REAR GARDEN Low maintenance with raised decking and side access. Shed.



Score	Energy rating	Current	Potential
92+	A		
81-91	B		
69-80	C	79 C	79 C
55-68	D		
39-54	E		
21-38	F		
1-20	G		

Portslade Branch
48 Boundary Road, Portslade BN3 4EF
portslade@whitlockandheaps.co.uk
01273 422706



Hove Branch
65 Sackville Road, Hove BN3 3WE
hove@whitlockandheaps.co.uk
01273 778577

Disclaimer: Whitlock & Heaps have produced these particulars in good faith and they are set out as a general guide. Accuracy is not guaranteed, nor do they form part of any contract. If there is any particular aspect of these details which you require any confirmation, please do contact us, especially if contemplating a long journey. All measurements are approximate. Fixtures and fittings, other than those mentioned above, to be agreed with the seller. Any services, systems or appliances at the property have not been tested.