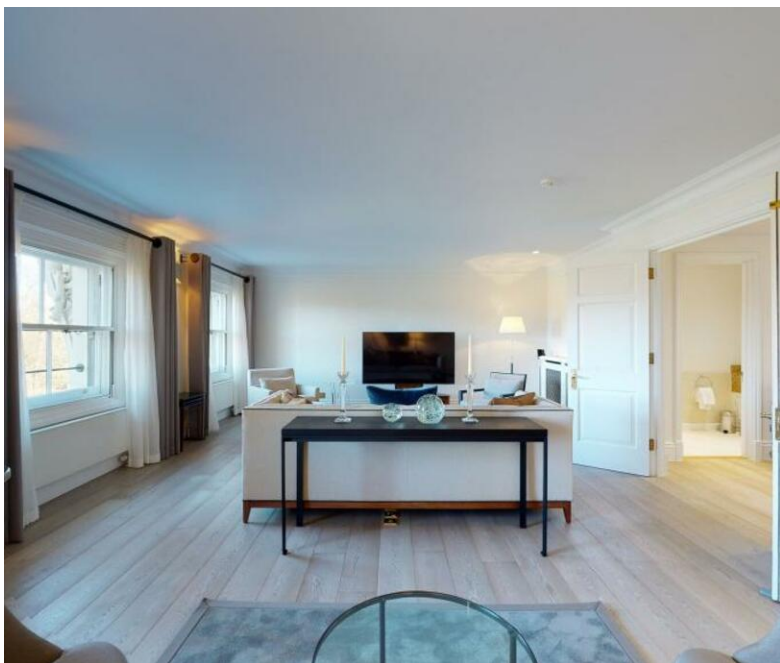
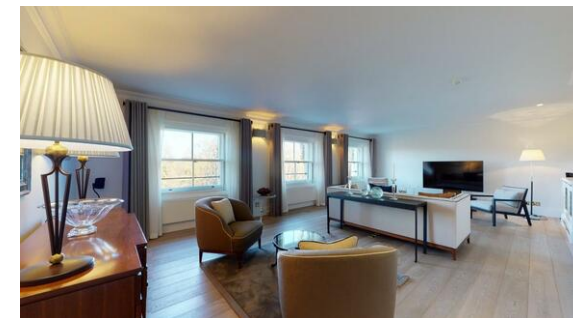




3 Bedroom 3 bath Apartment / Flat,
Hyde Park Gate, Kensington, London SW7

<https://qinvestments.london>



Luxury Serviced 3 Bedroom Apartment with large Terrace to Rent opposite Hyde Park on Kensington Road, London SW7.

- **Virtual walk-through available**
- **Opposite Hyde Park**
- **Large Terrace**
- **Air conditioning**
- **Housekeeping service and change of linen and towels once a week**
- **All utilities (gas, water, electricity) included**
- **Personalised service from our dedicated Concierge Team, available 24 hours**

Hyde Park Gate, Kensington, London SW7

Nestled in one of London's most sought-after locations, this luxury serviced 3-bedroom apartment on Kensington Road is a true gem. With its large terrace offering stunning views of the iconic Hyde Park, this property is sure to impress even the most discerning guests.

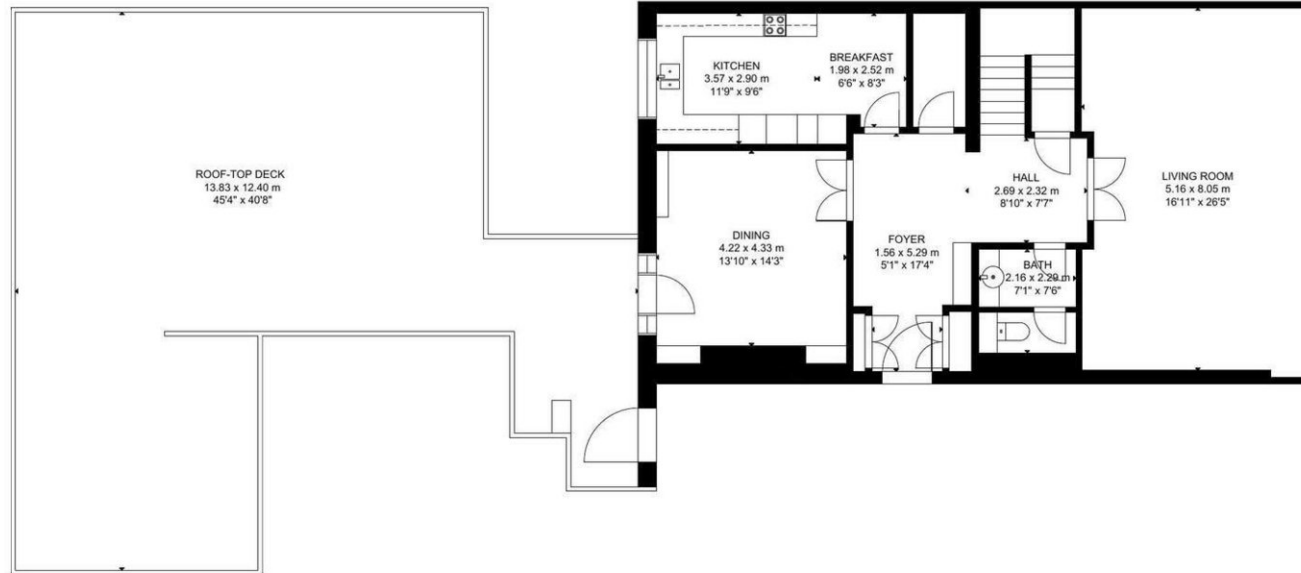
Upon entering this exquisite residence, you'll be transported to a bygone era, where elegance and luxury were the norm. Every detail of this stunning home has been meticulously crafted to capture the very essence of British heritage, from the stately apartments with their authentic period features, to the exquisitely proportioned interiors.

Available for stays of at least three months, this property is the perfect choice for those who appreciate the finer things in life. And with its prime location, you'll have everything you need right at your doorstep. Take a short walk and you'll find yourself at the Royal Albert Hall, surrounded by sophisticated boutiques in Knightsbridge and Kensington High Street, and various well-kept parks and gardens.

Kensington is a popular district amongst tourists and local Londoners alike, thanks to its stately Victorian buildings, galleries, and embassies. As the home of three of London's largest and most famous museums, this area offers plenty to view and explore all year round. And if you're in the mood for some retail therapy, the eclectic shopping scene, filled with gorgeous designer boutiques and brands, won't disappoint.

In terms of transportation, this property couldn't be more convenient. Located just a few minutes' walk from Gloucester Road and High Street Kensington tube stations, getting around the city couldn't be easier.

So, if you're looking to experience the very best of London living, don't miss your chance to stay at this magnificent apartment on Kensington Road.



GROSS INTERNAL AREA
TOTAL: 215 m²/2,317 sq ft
FIRST FLOOR: 114 m²/1,231 sq ft, SECOND FLOOR: 101 m²/1,086 sq ft
EXCLUDED AREA: ROOFTOP-DECK: 117 m²/1,264 sq ft
SIZE AND DIMENSIONS ARE APPROXIMATE, ACTUAL MAY VARY.

CONTACT US

Have a question for us? Please get in touch.

Q INVESTMENTS INTERNATIONAL LTD

T: +44 (0) 7985 487333

E: office@qinvestments.london

INVESTMENTS, REAL ESTATE & LIFESTYLE

Stay connected

Please visit our social media pages.

You can now find us on [Facebook](#), [Twitter](#), [Linkedin](#) and [Instagram](#) and many more!