



Pember Road, London NW10

£700,000 Share of Freehold

Welcome to Pember Road - a truly exquisite two-bedroom garden flat, impeccably presented and nestled on one of NW10's most sought-after residential streets. From the moment you step inside, it's clear this is a home of rare quality. Every detail has been considered, every corner tastefully finished, creating a space that is as refined as it is inviting.

The property boasts two generous double bedrooms, both beautifully appointed, alongside a sleek and contemporary family bathroom finished to an exceptional standard. But the real showstopper lies at the rear - a breath-taking open-plan kitchen and living space, enhanced by a flawlessly executed side return. Soaring glass ceilings/expansive glazing flood the space with natural light, bringing a sense of volume and calm that is nothing short of spectacular.

- Herringbone flooring
- Abundance of natural light
- Neff kitchen appliances
- Inviting Private garden
- Quartz worktop and matching quartz splashback
- Underfloor heating connected to a new boiler, running through the bathroom and kitchen
- Share of Freehold
- Complete chain
- Great location
- Close to shops and transport

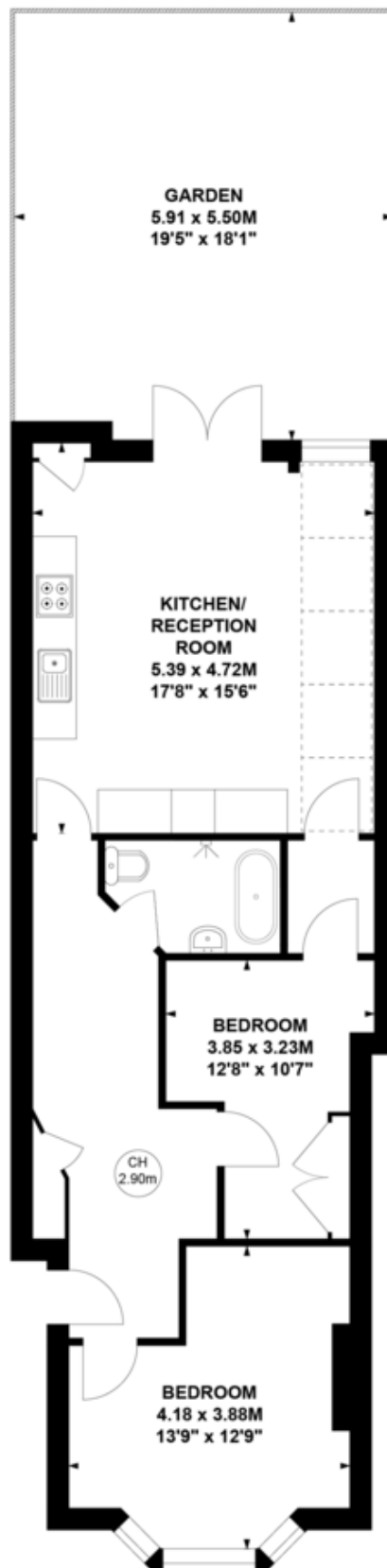
Pember Road, NW10

Approximate gross internal area

65.42 sq m / 704 sq ft

Key :

CH - Ceiling Height



Ground Floor

Not to scale. for guidance only and must not be relied upon as a statement of fact.

MONEY LAUNDERING REGULATIONS 2003: Intending purchasers will be asked to produce identification documentation at a later stage and we would ask for your co-operation in order that there will be no delay in agreeing the sale.

General: While we endeavour to make our sales particulars fair, accurate and reliable, they are only a general guide to the property and, accordingly, if there is any point which is of particular importance to you, please contact the office and we will be pleased to check the position for you, especially if you are contemplating travelling some distance to view the property.

Measurements: These approximate room sizes are only intended as general guidance. You must verify the dimensions carefully before ordering carpets or any built-in furniture.

Services: Please note we have not tested the services or any of the equipment or appliances in this property, accordingly we strongly advise prospective buyers to commission their own survey or service reports before finalising their offer to purchase.