



Radcliffe Avenue, London NW10

£725,000 Share of Freehold

Welcome to Radcliffe Avenue, where your dream of owning a luxurious garden apartment becomes reality. This stunning two-bedroom property boasts an impressive internal floor area of 1068 sq ft. Including the outbuilding in the meticulously maintained garden, the total space extends to an incredible 1203 sq ft. The apartment features two generously sized double bedrooms, both designed for comfort and style. The entire property is in excellent condition, reflecting the care and attention given by the current owners. One of the highlights of this home is the astonishing 31 ft open plan kitchen diner, a perfect space for both entertaining and everyday living. The bi-fold doors from the living area seamlessly extend the indoor space into the lush garden, creating a harmonious blend of indoor and outdoor living. With a share of the freehold, this property offers added peace of mind and long-term investment potential. Located in a prime area, Radcliffe Avenue provides the perfect balance of tranquillity and convenience. Embrace the lifestyle you've always desired in this exceptional garden apartment.

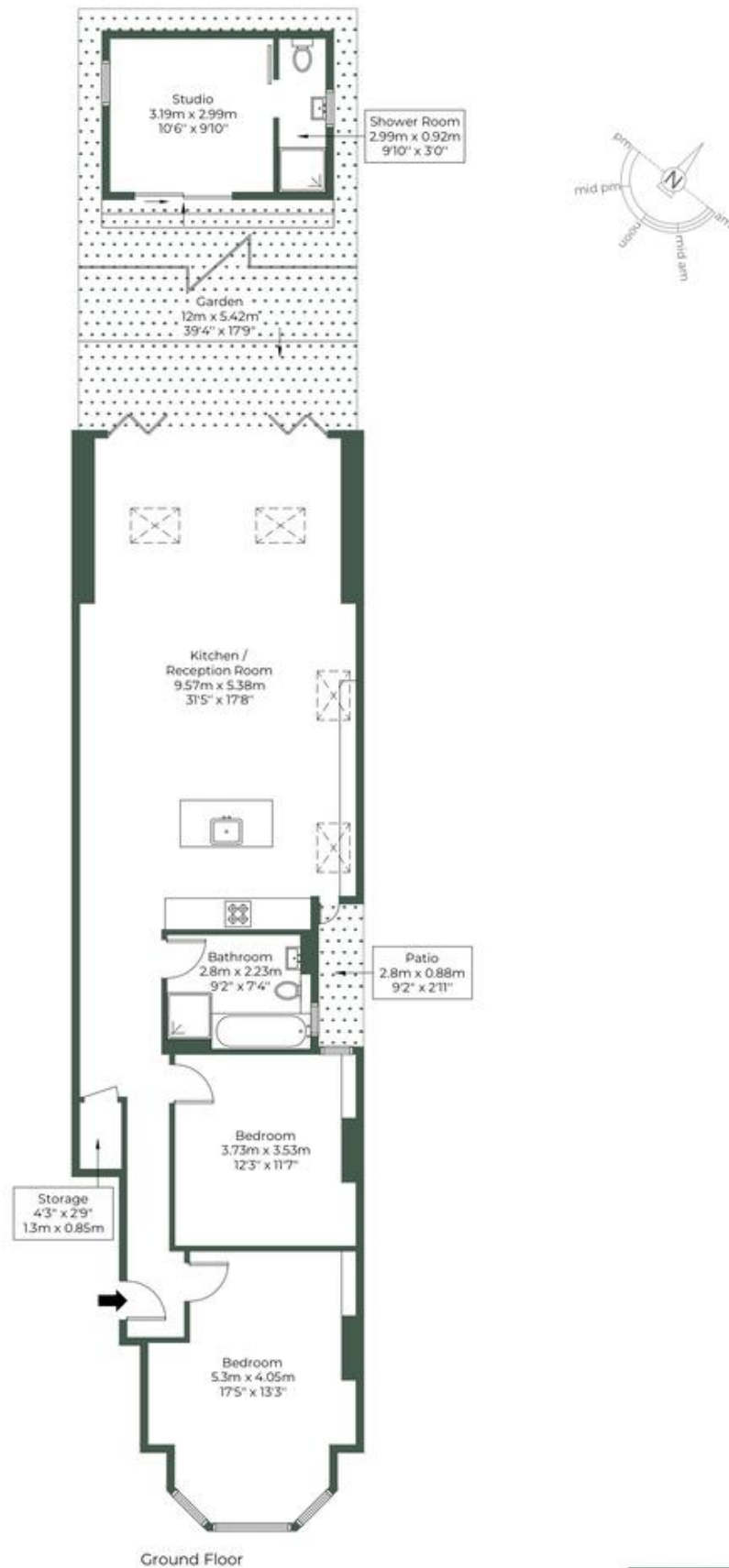
- Victorian conversion
- Two bedrooms
- Excellent condition
- Ground floor apartment
- Share of freehold
- Fully extended
- Private garden
- Quiet residential road
- Home office
- Close to shops and transports

RADCLIFFE AVENUE, NW10 5XS

Approximate Gross Internal Area = 99.2 sq.m / 1068 sq.ft

Outbuilding = 12.6 sq.m / 136 sq.ft

Total = 111.8 sq.m / 1203 sq.ft



M MILE

MONEY LAUNDERING REGULATIONS 2003: Intending purchasers will be asked to produce identification documentation at a later stage and we would ask for your co-operation in order that there will be no delay in agreeing the sale.

General: While we endeavour to make our sales particulars fair, accurate and reliable, they are only a general guide to the property and, accordingly, if there is any point which is of particular importance to you, please contact the office and we will be pleased to check the position for you, especially if you are contemplating travelling some distance to view the property.

Measurements: These approximate room sizes are only intended as general guidance. You must verify the dimensions carefully before ordering carpets or any built-in furniture.

Services: Please note we have not tested the services or any of the equipment or appliances in this property, accordingly we strongly advise prospective buyers to commission their own survey or service reports before finalising their offer to purchase.