

NEW
MiHomes



CHASE VIEW

— SPRING COURT ROAD, ENFIELD —

Luxury 5-Bedroom Detached Family Homes by Amara Property

SPRING COURT ROAD, ENFIELD, EN2 8JP

Nestled in the serene and sought-after neighborhood of Enfield EN2, Spring Court presents an exclusive collection of four 5-bedroom detached luxury family homes, meticulously crafted by Amara Property. Designed to blend contemporary elegance with practical family living, these residences at Chase View (Plots 1-4) offer an unparalleled lifestyle, surrounded by lush greenery and modern conveniences.



OVERVIEW:

- Four detached family houses
- Five bedrooms
- Four bathrooms
- Utility room & downstairs W/C
- Grade A efficiency rating (EPC)
- Passionately built by Amara Property
- Open plan kitchen/reception room
- Off street parking
- Countryside views on selected plots
- Prices from: £1,550,000 – £1,580,000



Exterior Elegance

From the moment you arrive, the striking exteriors of these homes captivate with their timeless design. Each property features a combination of classic brickwork and sleek cladding, complemented by composite aluminium front doors and UPVC windows. Block-paved driveways provide ample off-street parking, while perimeter tall fencing ensures privacy and security. The beautifully landscaped front gardens, complete with entrance lighting and external power sockets, create a warm and inviting first impression.



Spacious and Thoughtful Interiors

Step inside to discover expansive interiors designed for modern family life. The ground floor boasts an open-plan kitchen, living, and dining area (42.17 sqm / 502.73 sqft in Plots 1 & 2, 42.91 sqm / 523.49 sqft in Plots 3 & 4), seamlessly connecting to the garden through large bifold doors. This space is perfect for entertaining or relaxed family gatherings, with luxury LVT wood flooring and underfloor heating throughout. A formal living room (12.69 sqm / 136.59 sqft), a study (10.06 sqm / 108.28 sqft), a utility room, and a cloakroom complete the ground floor, offering versatility for every need.

The upper floors house five generously sized bedrooms, with the principal bedroom featuring a Juliet balcony, a luxurious en-suite (8.81 sqm / 94.83 sqft), and fitted wardrobes. Bedroom 2 also benefits from an en-suite and wardrobe, while the remaining bedrooms share a beautifully appointed family bathroom. A bedroom store adds practical storage space, ensuring a clutter-free home.





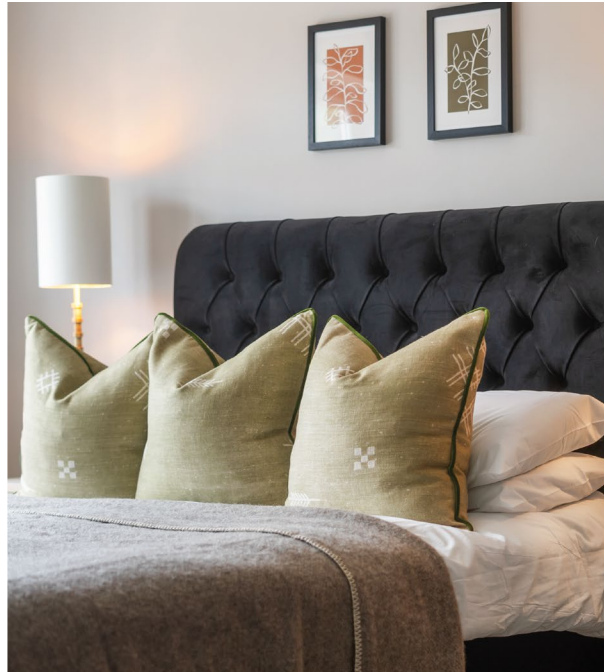
Gourmet Kitchen and Dining

The heart of each home is its contemporary Hacker-style kitchen, designed with soft-closing cabinetry, a quartz worktop, and a stylish kitchen island. Integrated Siemens appliances, including a single oven with 9 functions, a combination oven and microwave, and a 5-zone induction hob, cater to culinary enthusiasts. A Quooker hot tap, integrated fridge freezer, Bosch dishwasher, wine cooler, and LED under-cabinet lighting elevate the kitchen's functionality and aesthetic. The adjacent dining area flows effortlessly into the living space, creating a bright and airy environment with views of the garden.



Luxurious Bedrooms and Bathrooms

The principal bedroom is a serene retreat, adorned with plush carpeting, a high headboard, and soft neutral tones, as seen in the elegant design of these homes. Its en-suite, along with the other bathrooms, showcases luxury tiled walls and floors, contemporary sanitary ware, heated towel rails, and shaver points. A freestanding bath in the principal en-suite adds a touch of indulgence, while wall-hung WCs with soft-closing seats and feature pedestal sinks enhance the modern appeal.





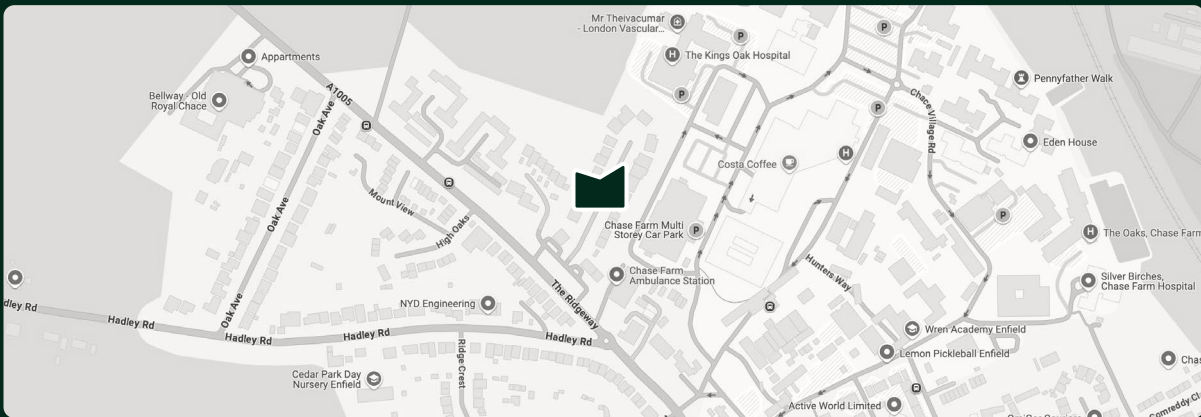
Modern Amenities and Sustainability

These homes are equipped with cutting-edge features for comfort and efficiency. Air source heat pumps and underfloor heating ensure year-round warmth, while CAT6 and coax cabling, wiring for Sonos speakers, and provisions for SkyQ (subscription required) cater to tech-savvy families. Black sockets, LED downlights, and ambient lighting create a sophisticated atmosphere. A comprehensive alarm system, fire alarms, and security locks provide peace of mind.

Outdoor Living

The rear gardens, accessible via bifold doors, offer a private oasis for relaxation or outdoor entertaining. With patio lighting and external taps, these spaces are perfect for summer barbecues or quiet evenings under the stars. The surrounding greenery, as seen in the lush views from the living areas, enhances the sense of tranquility.





Location is approximate

LOCAL AREA

Located in Enfield, under the local authority of Enfield Council, Spring Court offers the perfect balance of suburban calm and urban accessibility. Families will appreciate the proximity to excellent schools, parks, and local amenities, while commuters benefit from easy access to central London.

Specification Highlights

Kitchen:

Hacker-style cabinetry, Siemens appliances, Quooker hot tap, wine cooler.

Bedrooms:

Fitted wardrobes to principal bedroom and Bedroom 2, Juliet balcony.

Bathrooms:

Luxury tiling, freestanding bath in principal en-suite, heated towel rails.

Internal Features:

Oversized black veneered doors, Farrow & Ball paint, large bifold doors.

Flooring:

LVT wood flooring on the ground floor, carpets to stairs and bedrooms.

Electrical & Plumbing:

LED downlights, underfloor heating, air source heat pumps.

Security:

Comprehensive alarm system, fire alarms, security locks.

External:

Block-paved parking, composite front doors, UPVC windows.

Warranty:

10-year Buildzone structural warranty, 1-year Amara Property warranty.

Local Authority: Enfield

Outgoings: Subject to council tax

Tenure: Freehold

Other: Furniture, accessories & any equipment may be available for sale by separate negotiation

All Specifications

Kitchen

- Contemporary hacker style kitchen with soft closing cabinetry and drawer units - tall & base units in cashmere
- Quartz worktop
- Kitchen island
- Integrated Siemens appliances including:
 - Single oven with 9 functions
 - Combination oven and microwave
 - 5 Zone bi induction hob
- Quooker hot tap
- Integrated extractor to match with kitchen units with 3 speeds & intensive suction
- Integrated fridge freezer
- Integrated Bosch dishwasher
- Wine cooler
- LED under cupboard lighting

Bedrooms

- Wardrobes to principal dressing & bedroom 2
- Juliet balcony to principal bedroom

Bathrooms & En-Suites

- Beautifully designed bathrooms and en-suites by our in house Amara interiors team
- Luxury tiled walls and floors
- Feature pedestal sink in cloakroom
- Contemporary sanitary ware and accessories
- Wall hung WC with soft closing seat
- Family bath to principal en-suites in all plots
- Mirrors to bathrooms
- Heated towel rails to bathrooms
- Shaver points
- Combi boiler hot water heating system

Internal Features

- Oversized solid black veneered doors with black ironmongery
- Contemporary design architrave and skirting
- Large bifold door in open plan living and dining rooms with garden access
- Carpet with soft underlay to stairs, landings & bedrooms
- Farrow & Ball paint throughout

Flooring

- Luxury LVT wood flooring to ground floor hallway, cloak room, open plan kitchen, living & dining
- Carpets to stairs, landing & bedrooms

Electrical & Plumbing

- Black sockets and light switches
- LED downlights to all rooms
- Dimmable lighting & chandeliers/pendants
- CAT6 and coax cabling to AV sockets
- Wiring provisions in place to enable SkyQ - Subject to your selection and purchase of Sky subscription and equipment
- Wiring for Sonos music speakers to ground floor open plan living, formal living and master bedroom
- Underfloor heating throughout
- Air source heat pumps

Security

- Perimeter tall fencing
- Comprehensive alarm system installed throughout the house
- Fire alarm system
- Security locks to all windows & doors

External

- Block paved providing off-street parking
- Gardens laid to lawn with patio area
- External tap & power socket
- Entrance & patio lighting
- Composite aluminium front doors
- UPVC windows

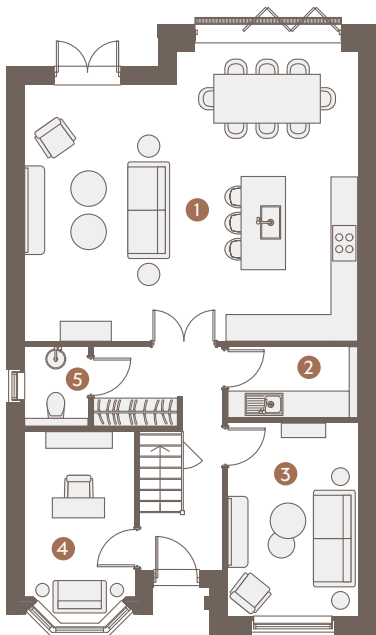
Warranty & Aftercare

- Complete 10 year structural warranty by Buildzone
- Amara Property 1 Year warranty**
- Demonstration of new home before client handover

***Refer to your aftercare & warranty policy—this specification is for indicative purposes only*

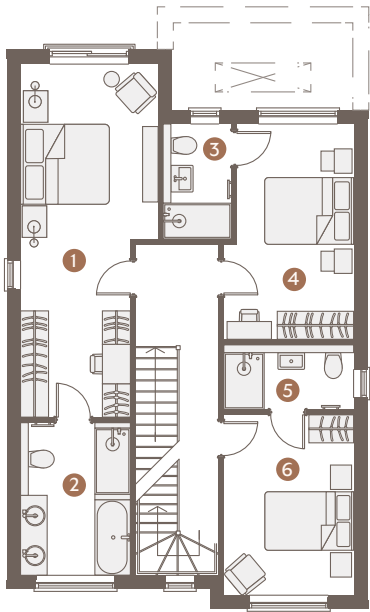
Floorplans

PLOT 01 & 02



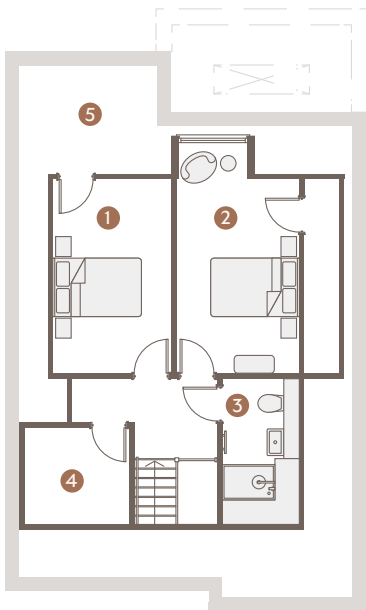
G GROUND FLOOR

1. Kitchen/Living/Dining	47.17 Sqm (507.73 Sqft)
2. Utility	4.67 Sqm (50.26 Sqft)
3. Formal Living	12.69 Sqm (136.59 Sqft)
4. Study	10.06 Sqm (108.28 Sqft)
5. Cloak Room	2.54 Sqm (27.34 Sqft)



01 FIRST FLOOR

1. Principal Bedroom	21.83 Sqm (234.97 Sqft)
2. Principal En-Suite	8.81 Sqm (94.83 Sqft)
3. En-Suite 2	3.95 Sqm (42.52 Sqft)
4. Bedroom 2	13.38 Sqm (144.02 Sqft)
5. En-Suite 3	4.24 Sqm (45.63 Sqft)
6. Bedroom 3	11.87 Sqm (127.76 Sqft)

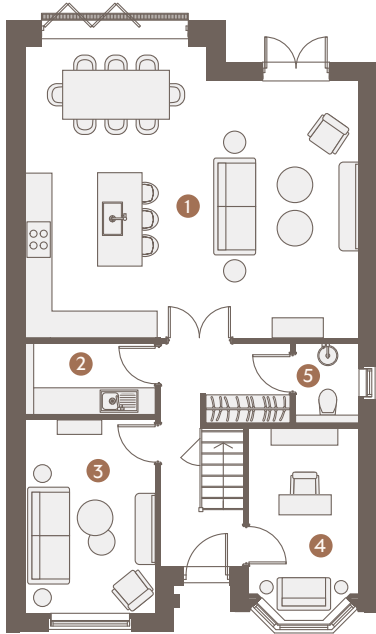


02 SECOND FLOOR

1. Bedroom 4	11.68 Sqm (125.72 Sqft)
2. Bedroom 5	13.21 Sqm (142.19 Sqft)
3. Family Bathroom	3.64 Sqm (39.18 Sqft)
4. Bedroom Store	5.10 Sqm (54.89 Sqft)
5. Storage	

Floorplans

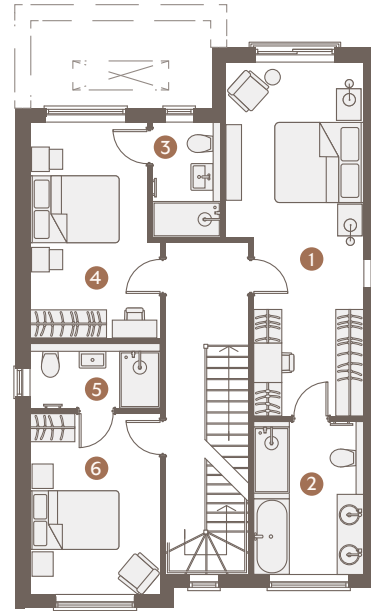
PLOT 03 & 04



G

GROUND FLOOR

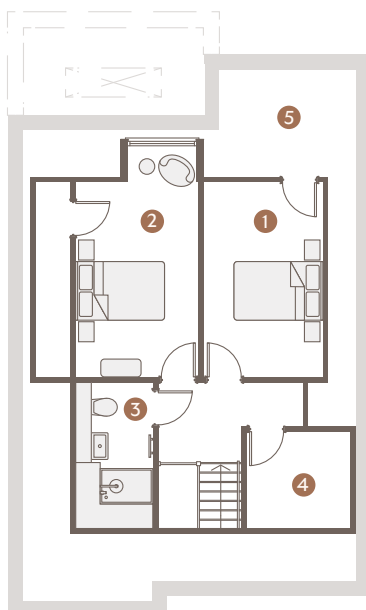
1. Kitchen/Living/Dining	47.17 Sqm (507.73 Sqft)
2. Utility	4.67 Sqm (50.26 Sqft)
3. Formal Living	12.69 Sqm (136.59 Sqft)
4. Study	10.06 Sqm (108.28 Sqft)
5. Cloak Room	2.54 Sqm (27.34 Sqft)



01

FIRST FLOOR

1. Principal Bedroom	21.83 Sqm (234.97 Sqft)
2. Principal En-Suite	8.81 Sqm (94.83 Sqft)
3. En-Suite 2	3.95 Sqm (42.52 Sqft)
4. Bedroom 2	13.38 Sqm (144.02 Sqft)
5. En-Suite 3	4.24 Sqm (45.63 Sqft)
6. Bedroom 3	11.87 Sqm (127.76 Sqft)



02

SECOND FLOOR

1. Bedroom 4	11.68 Sqm (125.72 Sqft)
2. Bedroom 5	13.21 Sqm (142.19 Sqft)
3. Family Bathroom	3.64 Sqm (39.18 Sqft)
4. Bedroom Store	5.10 Sqm (54.89 Sqft)
5. Storage	



About Amara Property

Amara Property is renowned for delivering luxury homes that combine timeless design with modern functionality. With a commitment to quality and innovation, Amara Property ensures each home at Spring Court is a masterpiece of craftsmanship. Visit amaraproperty.co.uk to learn more about their exceptional developments.

Discover your dream home at Spring Court—where luxury meets family living. Contact Amara Property or Mi Homes today to arrange a viewing.



chaseview@mi-homes.co.uk

Contact:



+44 (0) 20 7323 9574



chaseview@mi-homes.co.uk



mi-homes.co.uk



9 Onslow Parade, Hampden Square,
Southgate, N14 5JN

Social:



[mi.homes](https://www.instagram.com/mi.homes)



[mihomespropertyagents](https://www.facebook.com/mihomespropertyagents)



[mi homes](https://www.linkedin.com/company/mi-homes)

We would love to help you make
this dream a reality. Let's talk.