



Llys Cyncoed, £360,000

- Fantastic modern family home
- Updated & Improved
- Contemporary finish
- Driveway
- Landscaped garden
- Sought after location
- EPC Rating: C



 4
  2
  2



About the property

This superb, modern four-bedroom detached family home is situated in a highly sought-after area of Oakdale, occupying a prime position within the neighbourhood. The property has been extensively updated and improved throughout, offering exceptionally well-presented accommodation.

The ground floor features a welcoming hallway, a versatile study or playroom, a contemporary kitchen that opens into a spacious dining area, and a convenient cloakroom with WC. On the first floor, there are four generously sized bedrooms, including a master with its own ensuite, along with a stylish family bathroom.

Externally, the home benefits from a recently resurfaced resin driveway at the front, while the rear boasts a beautifully enclosed and landscaped garden, providing an ideal space for outdoor living.

Ideally located, the property is within close proximity to several reputable primary and secondary schools, as well as a wide range of local amenities. A viewing is highly recommended to fully appreciate the quality and space this exceptional home has to offer.



Accommodation

Hallway

Study

9' 10" x 7' 11" (3.00m x 2.41m)

Cloakroom/Wc

Kitchen

12' x 11' 4" (3.66m x 3.45m)

Dining Room

16' 6" x 7' 8" (5.03m x 2.34m)

Lounge

15' 2" x 9' 11" (4.62m x 3.02m)

First Floor Landing

Bedroom One

14' 11" x 12' 6" (4.55m x 3.81m)

Ensuite

Bedroom Two

11' 7" x 11' (3.53m x 3.35m)

Bedroom Three

11' 6" x 9' 4" (3.51m x 2.84m)

Bedroom Four

9' 10" x 8' 5" (3.00m x 2.57m)

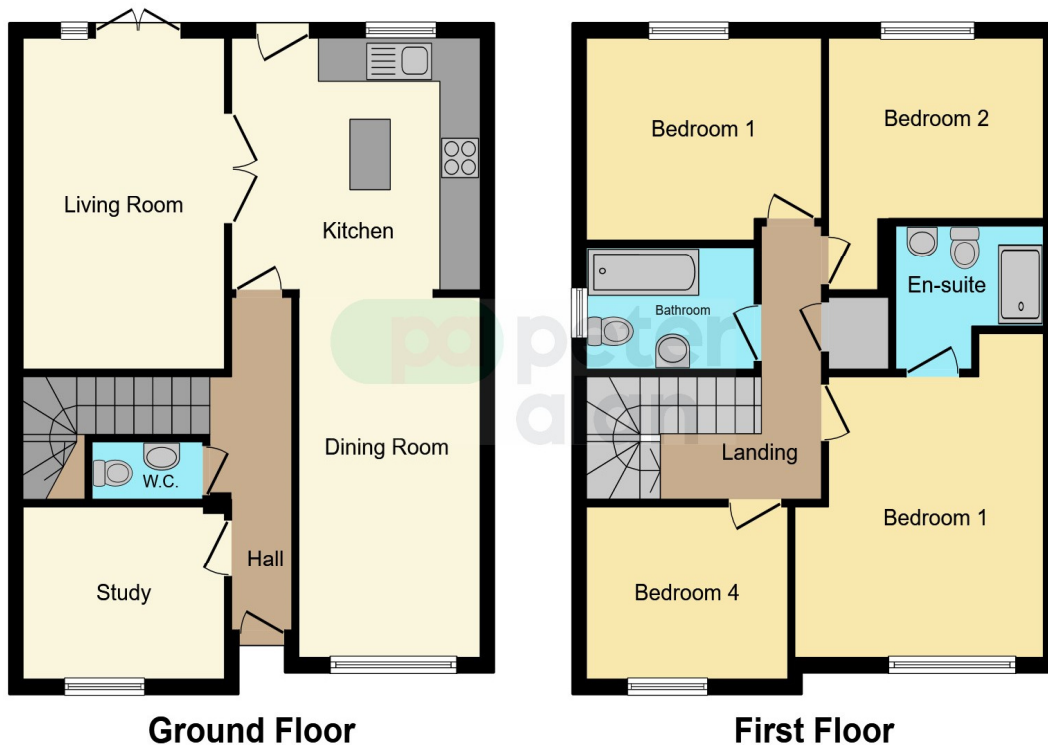
Family Bathroom

Outside

01495 231199

blackwood@peteralan.co.uk

Floorplan



This floor plan is for illustrative purposes only. It is not drawn to scale. Any measurements, floor areas (including any total floor area), openings and orientation are approximate. No details are guaranteed, they cannot be relied upon for any purpose and they do not form part of any agreement. No liability is taken for any error, omission or misstatement. A party must rely upon its own inspection(s). Powered by www.focalagent.com



Important Information

Note while we endeavour to make our sales details accurate and reliable, if there is any point which is of particular interest to you, please contact the office and we will be pleased to confirm the position for you. We have not personally tested any apparatus, equipment, fixtures, fittings or services and cannot verify they are in working order or fit for their purposes. Nothing in these particulars is intended to indicate that carpets or curtains, furnishings or fittings, electrical goods (whether wired or not). Gas fires or light fittings or any other fixtures not expressly included form part of the property offered for sale. This computer generated Floorplan, if applicable, is intended as a general guide to the layout and design of the property. It is not to scale and should not be relied upon for dimensions. Tenure: We cannot confirm the tenure of the property as we have not had access to the legal documents. The buyer is advised to obtain verification from their solicitor or surveyor.

Peter Alan Limited is registered in England and Wales under company number 2073153, Registered Office is Cumbria House, 16-20 Hockliffe Street, Leighton Buzzard, Bedfordshire, LU7 1GN. VAT Registration Number is 500 2481 05. For activities relating to regulated mortgages and non-investment insurance contracts, Peter Alan Limited is an appointed representative of Connells Limited which is authorised and regulated by the Financial Conduct Authority. Connells Limited's Financial Services Register number is 302221. Most buy-to-let