



Two Double Bed, Two Bath, 1st Floor Apartment Royal Quarter. Kingston Upon Thames £475,000 Leasehold

A spacious light bright and airy, two double bed, 2 bath, 1st floor apartment situated in the popular Royal Quarter development within easy walking distance of Kingston BR and town centre.

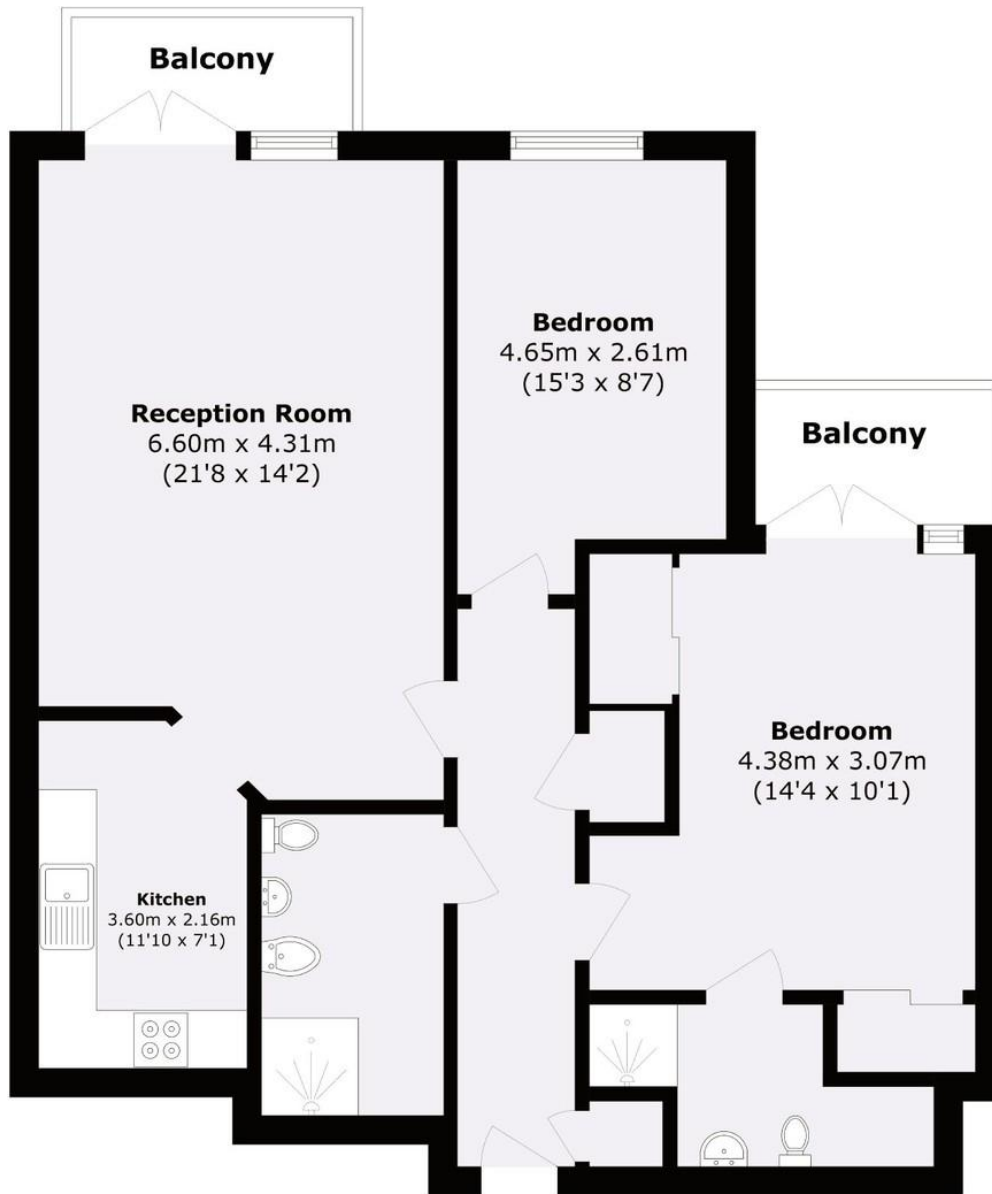
Offering 934' sq ft of living space, two private balconies, modern fitted kitchen with built in appliances, modern fitted bathrooms, electric heating system, double glazed windows.

Royal quarter offers lift service to all floors, 24 hour concierge, a residents gymnasium & secure under ground parking. Vendor suited with no onward chain.

WWW.STACKANDBONNER.COM

020 8974 8844
sales@stackandbonner.com





Total area (approx.): 86.8 sq. m (934.3 sq. ft)

Total area (approx.): 6.8 sq. m (73.1 sq. ft)

- Spacious 934'sq ft 1st Floor Apartment
- Two Double Bedrooms
- A Modern Fitted Kitchen With Built In Appliances
- Modern Fitted Double Shower Rooms
- Two Separate Balconies
- Electric Heating System
- Lift Access & 24 Concierge
- Secure Under Ground Parking
- Vendor Suited with No Onward Chain
- 979 Year Lease
- Service Charges £5,098.48 per annum plus a reserve fund contribution of £1,223.14 per annum
- Ground Rent £250 P.A
- Council Tax Band E £3,090,31