



Fairmeadow Apartments, Fairmeadow, Maidstone, Kent **£195,000**





YOUR MOVE





## Fairmeadow Apartments, Fairmeadow, Maidstone, Kent

**£195,000**

### Property Description

FINAL FEW REMAINING! Fairmeadow is an exciting development of 15 newly created and designed luxury town centre apartments, some benefiting from river views and sit out balconies. The apartments will be finished to a contemporary high quality finish including high gloss fully integrated kitchens, en-suites to master bedrooms, oak style flooring and multi-functional living spaces to suit everyday needs. Parking facilities, secure entry system and lifts to all floors add to the desirability of this unique development. Please note that all sales particulars and images are for marketing and illustrative purposes only. Advertising images may include upgrades as home specifications can vary. EPC On Completion.

### Our View

Fairmeadow really is a fantastic landmark scheme to enjoy for a long time ahead and with only 15 available interest is already proving to be very strong! For information please contact Your Move Maidstone.

### Location

Situated in Kent's vibrant county town just 32 miles from London. Fairmeadow is within walking distance of the extensive range of shopping and eating facilities. Look no further than Fremilns Walk or The Mall for refutable proof of this. Maidstone East and West train station makes this an ideal location for commuters into the Capital. With Mote park, leisure centre, museums, theatre and buzzing nightlife there really is something for everyone.



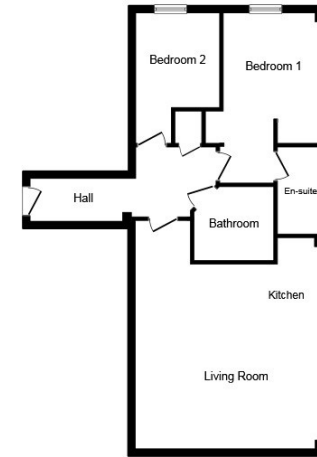
**EPC On Completion**  
**For full EPC please contact the branch**



**First Floor Plan**



**First Floor Plan**



**First Floor Plan**

This plan is for illustration purposes only and may not be representative of the property. Plan not to scale.

Powered by audioagent.com

IMPORTANT NOTE TO PURCHASERS: We endeavour to make our sales particulars accurate and reliable, however, they do not constitute or form part of an offer or any contract and none is to be relied upon as statements of representation or fact. The services, systems and appliances listed in this specification have not been tested by us and no guarantee as to their operating ability or efficiency is given. All measurements have been taken as guide to prospective buyers only, and are not precise. Floor plans where included are not to scale and accuracy is not guaranteed. If you require clarification or further information on any points, please contact us, especially if you are travelling some distance to view. Fixtures and fittings other than those mentioned are to be agreed with the seller.

Your Move is a trading name of your-move.co.uk, registered in England at Newcastle House, Albany Court, Newcastle Business Park, Newcastle upon Tyne NE4 7YB (number 01864469).

24 King Street, Maidstone, Kent, ME14 1DW

01622 671151 \* Maidstone@your-move.co.uk

\*Calls may be recorded and/or monitored for training and/or security purposes.

