

pocock & shaw

Residential sales, lettings & management



5 Ashbourne Court,
Vicarage Road,
Newmarket, CB8 8GH

A particularly well appointed and redecorated 2nd floor 2 bedroom apartment situated in a smart gated development just to the south of the town centre.

Hall, open plan sitting room/kitchen, bathroom, gated off road parking. Superb first time buy or investment opportunity. EPC: C

Guide Price: £197,500



Newmarket renowned as the British Headquarters of horse racing offers an interesting and varied range of local shops and amenities. These include the National Horse Racing Museum, a twice weekly open air market, hotels, restaurants and modern leisure facilities. There is a regular railway service to London's Kings Cross and Liverpool Street stations via Cambridge. An excellent road network links the region's principal centres, including the University City of Cambridge and the historic market town of Bury St Edmunds, both approximately 13 miles from Newmarket.

Ashbourne court is an attractive scheme of apartments, which vary in size, grouped around a gated car parking area and is situated just to the south of Newmarket town centre.

Flat 5 is on the 2nd floor and is very well appointed, enjoying light and spacious accommodation which has just been redecorated. In addition, several of the carpets are also new as are the oven and kitchen worktops.

It is considered that this property is an ideal property for a first time buyer or investment opportunity. Please contact our lettings department if you are interested in discussing the rental demand for this property.

With the benefit of double glazed windows and electric night storage heaters in detail the accommodation includes:-

Communal Entrance Hall

With staircase to the second floor.

Hall

With an electric storage heater, wood laminate flooring, ceiling spotlights, airing cupboard, with a hot water cylinder.

Sitting Room 6.26m (20'7") x 3.45m (11'4")

With a UPVC double glazed window to the front aspect, electric storage heater, telephone point, TV point, opening to the:-

Kitchen 2.51m (8'3") x 2.34m (7'8")

Fitted with a matching range of base and eye level units with worktop space over, stainless steel sink unit with mixer tap and tiled splashbacks, plumbing for an automatic washing machine, space for fridge/freezer, fitted electric oven, four ring ceramic hob with extractor hood over, uPVC double glazed window to front aspect, tiled flooring.

Bedroom 1 3.96m (13') x 3.41m (11'2")

With UPVC double glazed window to the rear aspect, telephone point, TV point, range of wardrobes.

Bedroom 2 3.41m (11'2") x 2.70m (8'10")

With UPVC double glazed window to rear aspect, telephone point, TV point.

Bathroom

Fitted with three piece suite comprising of a bath with shower over, pedestal wash hand basin and low-level WC, tiled splashbacks, extractor fan, tiled flooring, ceiling spotlights.

Outside

Ashbourne Court has a pair of electrically operated gates leading to a parking area where this flat has one parking space. There are



several shrub borders, a bin area and a pedestrian gate with code to Vicarage Road.

Tenure

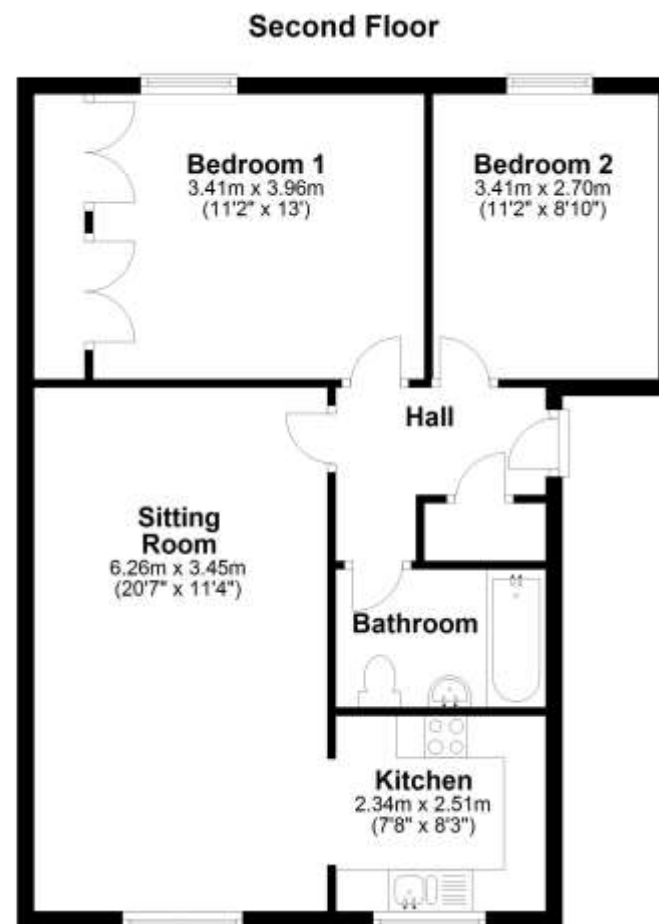
The property is leasehold but each apartment owner owns a percentage share of the freehold company that owns the freehold. The original term was for 99 years granted in January 2003. There is a maintenance charge of £1000 per annum that includes communal cleaning, gardening, buildings insurance and maintenance of the electric gates.

Services

Mains water, drainage and electricity are connected.

Council Tax Band: B Forest Heath District Council

Viewing: Strictly by prior arrangement with Pocock & Shaw.



pocock & shaw
Residential sales, lettings & management

2 Wellington Street Newmarket Suffolk CB8 0HT

Tel: 01638 668 284

Email: newmarket@pocock.co.uk www.pocock.co.uk

An independent firm with four local offices and London marketing via the Mayfair Office

Agent's note: (i) Unless otherwise stated on the front page the information contained within these particulars has been provided and verified by the owner or his/her representative(s) and is believed to be accurate. All measurements are approximate. (ii) The vendor(s) reserve(s) the right to remove any fixtures, fittings, carpets, curtains or appliances unless specific arrangements are made for their inclusion in the sale. (iii) None of the electrical, heating or plumbing systems have been tested