



envisage
Sales and Lettings

INVESTMENT OPPORTUNITY NEAR WARWICK
UNIVERSITY - CANLEY

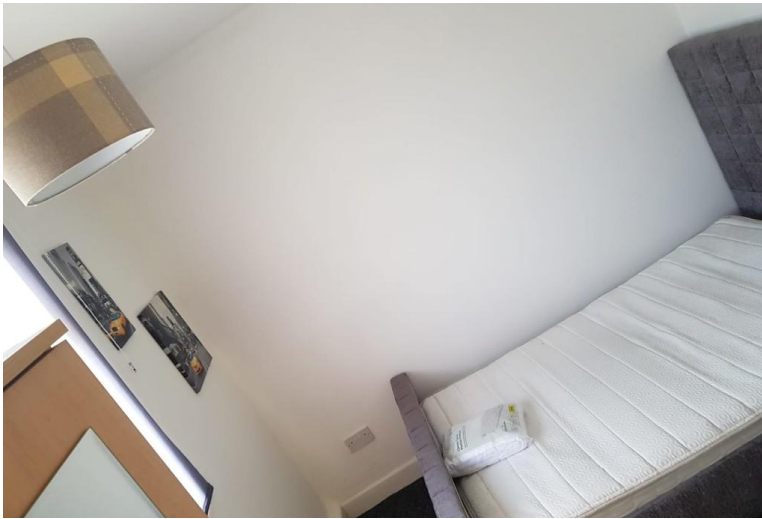




FULL DESCRIPTION

CALLING INVESTORS - 5 Bedroom with 4 En-suites
Semi Detached property for Sale situated close to
Warwick University, Cannon Park Shopping Centre
and Good Transport Links. If you are looking to
invest near the University or want to increase your
portfolio look no further. The property consists of 5
bedrooms with 4 ensuite and one bathroom,
Lounge, Kitchen and Garden in the popular area of
Canley walking distance from the University. If you
are interested in this fantastic opportunity please
contact us at Envisage on 02476 470440.





Score	Energy rating	Current	Potential
92+	A		
81-91	B		
69-80	C		70 C
55-68	D		
39-54	E	49 E	
21-38	F		

Agents Note: Whilst every care has been taken to prepare these sales particulars, they are for guidance purposes only. All measurements are approximate and are for general guidance purposes only and whilst every care has been taken to ensure their accuracy, they should not be relied upon and potential buyers are advised to recheck the measurements



89c Far Gosford Street, Coventry,
Warwickshire, CV1 5EA

www.envisageproperty.com
info@envisageproperty.com
02476 470 440

Mon – Fri: 9am – 6pm
Sat: 9am – 4pm